

# The Glasgow City Region City Deal Glasgow Airport Investment Area

Developing Proposals

May 2016





## The Glasgow City Region City Deal

The £1.13bn Glasgow City Region City Deal is an agreement between the UK Government, the Scottish Government and eight local authorities across Glasgow and the Clyde Valley: East Dunbartonshire Council; East Renfrewshire Council; Glasgow City Council; Inverclyde Council; North Lanarkshire Council; Renfrewshire Council; South Lanarkshire Council; and West Dunbartonshire Council.

The City Deal will bring tens of thousands of jobs to Glasgow and the Clyde Valley through 20 infrastructure projects; drive innovation and growth through the support of key sectors such as life sciences; and address challenges in the region's labour market.

Both the UK and Scottish Governments are each giving the Glasgow City Region local authorities £500million in funding for the City Deal with member authorities investing a further £130million.

Renfrewshire Council is playing a key role in delivering three of the biggest infrastructure investments; the Airport Access project, the Clyde Waterfront and Renfrew Riverside project and the Glasgow Airport Investment Area project.

These projects, together with other Glasgow City Region City Deal projects being delivered by other local authorities, will transform local and regional connectivity resulting in job opportunities through business growth and inward investment.

## City Deal Benefits

Overall, City Deal is expected to provide the following benefits:

- £2.2 billion of additional Gross Value Added (GVA) per annum to the Glasgow City Region
- 29,000 permanent additional jobs and improved access to employment opportunities
- 15,000 construction jobs
- Unlock £3.3 billion of new private sector investment
- Spread the benefits of economic growth across the Glasgow City Region, ensuring that disadvantaged areas benefit from the growth

# Glasgow Airport Investment Area Project

The Glasgow Airport Investment Area has the potential to become a powerhouse of economic growth for Renfrewshire and the Glasgow City Region; being close to the M8, and to key commercial sites with significant economic growth potential such as the Airport, Westway and Inchinnan Business Parks, Paisley and Renfrew town centres.

To help realise that potential, the Glasgow Airport Investment Area project will deliver infrastructure and environmental improvements aimed at enabling the continued growth and expansion of the Airport as a key driver of the local and regional economy and a source of thousands of local jobs, allowing existing business to grow and new business to be created.

This investment in infrastructure will help to create a more attractive, vibrant and sustainable place to live and work by better connecting communities and businesses; resulting in more employment opportunities for Renfrewshire and City Region residents.

## Objectives

The Glasgow Airport Investment Area Project will:

- Help facilitate future airport expansion and the creation of a world class business and commercial location in the heart of Renfrewshire providing many local jobs
- Improve connections between Paisley and Glasgow Airport, existing business parks, new development sites and significant population and employment areas
- Provide a new, more attractive link between Paisley and Glasgow Airport
- Enhance the local environment through the use of high quality landscaping to encourage high quality development and regeneration
- Improve access to key residential, employment, education, leisure and retail sites for all modes of transport, including improved opportunities for leisure and active travel alongside and across the White Cart
- Optimise the operation of the local road network, resulting in improved journey time reliability and safety

## Summary of Key Points

- Re-alignment of Abbotsinch Road, including improved connections with the existing road network
- Two new bridges across the White Cart adjacent to Westway Business Park and Paisley Harbour
- A new "Gateway" route between Paisley Town Centre and the Airport
- Improved facilities for public transport, cyclists and pedestrians

## Project Costs

The estimated cost of the project is £51.4M with the majority of funding being provided by the UK and Scottish Governments, reflecting the strategic importance to the City Region economy, with additional funding being provided by Renfrewshire Council, reflecting the importance of the project to the local economy.

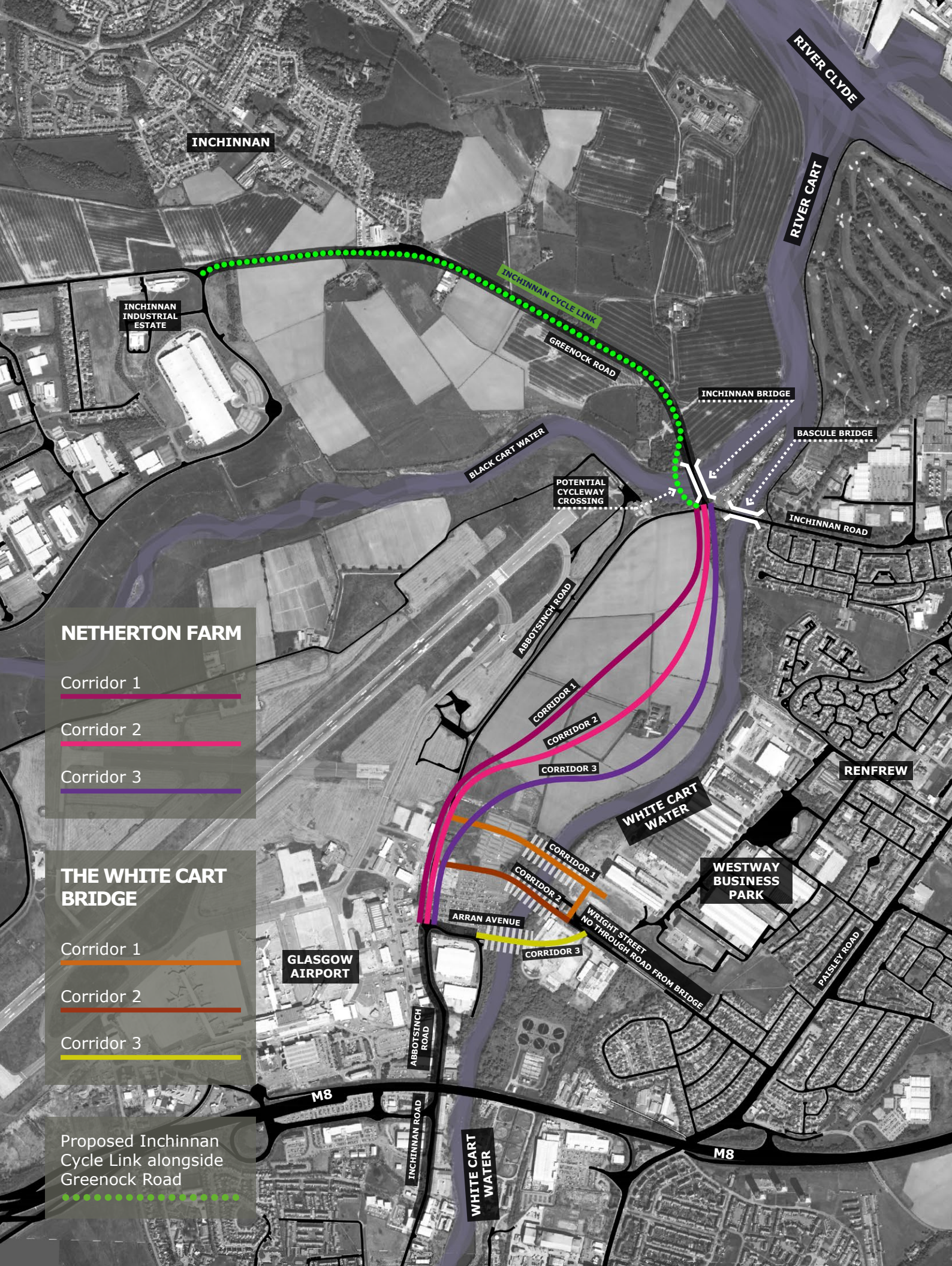
## Current Position

The project team is identifying possible locations for the bridges and associated roads and cycleways which will best deliver the project objectives.

These options will each be assessed and refined in an appraisal process to establish the most appropriate and cost effective option.

During the appraisal process events will be held at which stakeholders and the public will be asked to contribute to and comment on the various options and the emerging designs.





INCHINNAN

INCHINNAN INDUSTRIAL ESTATE

INCHINNAN CYCLE LINK

GREENOCK ROAD

INCHINNAN BRIDGE

BASCULE BRIDGE

INCHINNAN ROAD

BLACK CART WATER

POTENTIAL CYCLEWAY CROSSING

ABBOTSINCH ROAD

### NETHERTON FARM

Corridor 1

Corridor 2

Corridor 3

### THE WHITE CART BRIDGE

Corridor 1

Corridor 2

Corridor 3

Proposed Inchninnan Cycle Link alongside Greenock Road

RENFREW

WHITE CART WATER

WESTWAY BUSINESS PARK

PAISLEY ROAD

GLASGOW AIRPORT

ARRAN AVENUE

WRIGHT STREET NO THROUGH ROAD FROM BRIDGE

ABBOTSINCH ROAD

INCHINNAN ROAD

WHITE CART WATER

M8

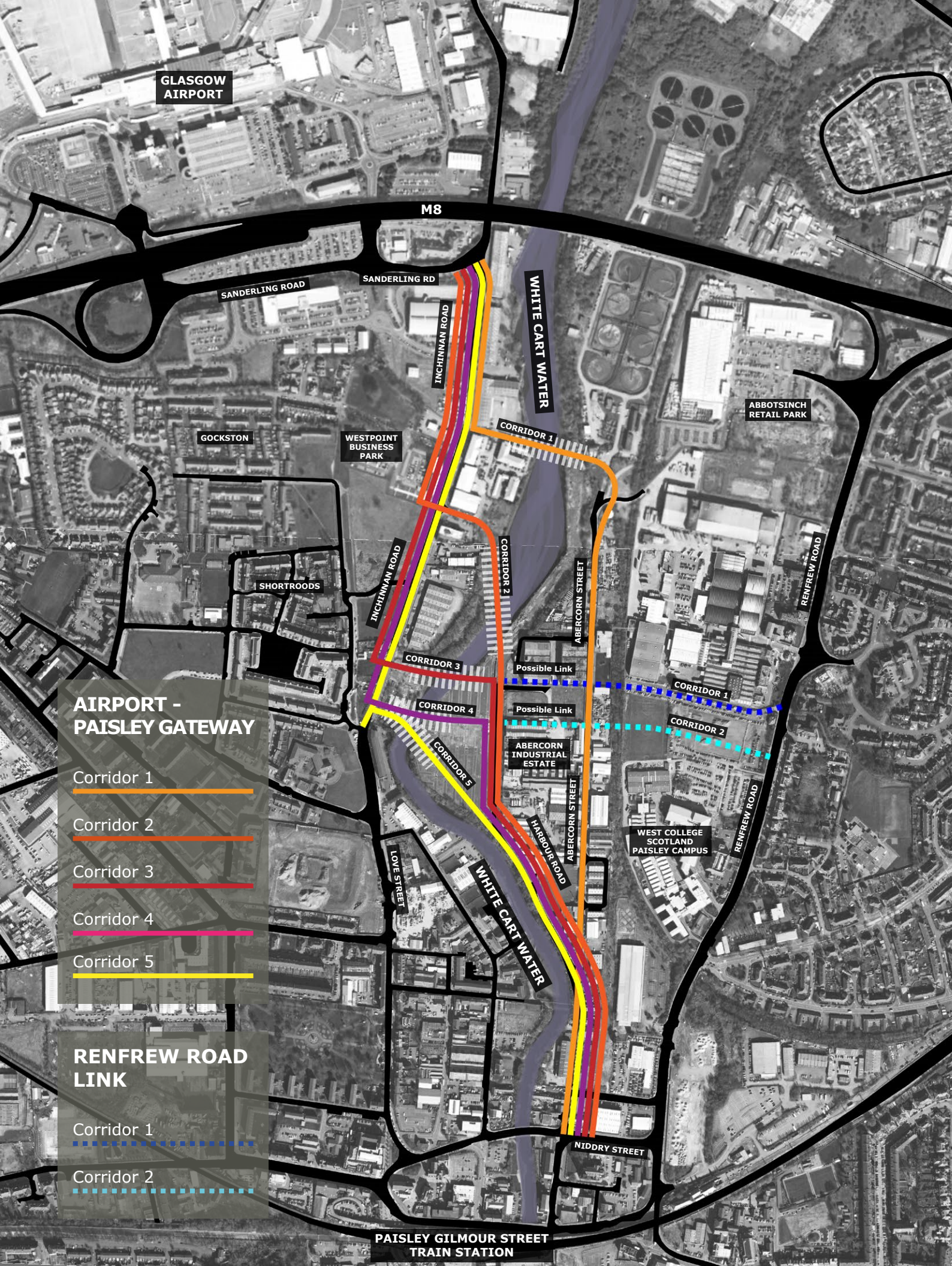
M8

## GLASGOW AIRPORT INVESTMENT AREA NETHERTON FARM / THE WHITE CART BRIDGE

0 100 200 400 m







GLASGOW  
AIRPORT

M8

SANDERLING ROAD

SANDERLING RD

INCHINNAN ROAD

WHITE CART WATER

ABBOTSINCH  
RETAIL PARK

GOCKSTON

WESTPOINT  
BUSINESS PARK

CORRIDOR 1

SHORTROODS

INCHINNAN ROAD

CORRIDOR 2

ABERCORN STREET

RENFREW ROAD

### AIRPORT - PAISLEY GATEWAY

Corridor 1

Corridor 2

Corridor 3

Corridor 4

Corridor 5

Possible Link

Possible Link

CORRIDOR 1

CORRIDOR 2

CORRIDOR 3

CORRIDOR 4

CORRIDOR 5

ABERCORN  
INDUSTRIAL  
ESTATE

ABERCORN STREET

WEST COLLEGE  
SCOTLAND  
PAISLEY CAMPUS

RENFREW ROAD

LOVE STREET

WHITE CART WATER

HARBOUR ROAD

NIDDY STREET

PAISLEY GILMOUR STREET  
TRAIN STATION

### RENFREW ROAD LINK

Corridor 1

Corridor 2





## Sustainable Transport Measures

The significant investment in new bridges and cycle routes complements and builds on other City Deal & Renfrewshire Council projects & programmes, including the Clyde Waterfront & Renfrew Riverside Project, the Renfrewshire Cycling Strategy, the Paisley Town Centre Regeneration Strategy and the Paisley 2021 City of Culture Bid.

The new infrastructure will improve journey time reliability for active travel modes; make healthier and lower carbon travel safer and more attractive; encourage travel behaviour change; deliver improved connectivity between key residential, employment, education, leisure and retail sites; and improve access to public transport.

## Next Steps

In July 2016, work will start on the design of the best performing options. As the design work progresses, further events will be held at which stakeholders and the public will again be asked to contribute to and comment on the emerging designs.

The Statutory process will start in the Spring of 2017 with the submission of Planning Applications and the publication of Draft Orders. At that stage, the public will have another opportunity to comment on, and contribute to, the project.

## Timescale for Completion



## Have Your Say

You can have your say on this and the other Renfrewshire City Deal projects in the following ways:

- Attend a public exhibition where you can view the plans, talk to our team and complete a feedback form

Location	Date and Time
Renfrew Town Hall	17 May 1000-1900 hours
Paisley Town Hall	18 May 1000-1900 hours
Intu Braehead	19 May 1000-1900 hours

- Write to us at:  
City Deal Project Team  
Sweco  
City Park, 368 Alexandra Parade, Glasgow G31 3AU
- Email us at: [citydeal@renfrewshire.gov.uk](mailto:citydeal@renfrewshire.gov.uk)
- Complete the feedback form at [www.renfrewshire.gov.uk/citydeal](http://www.renfrewshire.gov.uk/citydeal)

## Other City Deal Projects in Renfrewshire

The £78.3M **Clyde Waterfront & Renfrew Riverside** aims to regenerate the Clyde Waterfront as an attractive riverside and urban area that supports existing and promotes new industrial, commercial, business, retail and leisure opportunities.

With the construction of a new 'opening' bridge across the River Clyde, which will accommodate vehicles, pedestrians and cyclists, and the construction of the Renfrew Northern Development Road, the project will better link communities and businesses on both sides of the river.

This will increase the potential for business growth, for businesses on both sides of the river, as they gain access to increased numbers of customers and suppliers throughout Renfrewshire, Glasgow, Clydebank and the wider City Region.



The £144M **Glasgow Airport Access Project** is the City Deal's flagship project and emphasises the importance of Renfrewshire's role in the future economic success of the region.

The project will provide a direct link between Glasgow Central Station and Glasgow Airport, stopping at Paisley Gilmour Street station. This will make it easier for passengers to get to the airport and help local employees to get to work there while also improving access for other businesses in the area.

Crowned UK Airport of the Year 2015, its continuing success and expansion is vital to the wider economy of the Glasgow City Region area and to Renfrewshire's economic development. The Airport Access project will support this growth by offering better connections to all areas of the City Region by improving links with the wider transport network.



Further information on these exciting projects can be found at [www.renfrewshire.gov.uk/citydeal](http://www.renfrewshire.gov.uk/citydeal)

