



Renfrewshire
Council

Pension Credit

Pension Credit is a benefit for older people in Great Britain.

The amount of pension credit you will receive is based upon the amount of money you have. Women can claim pension credit once they reach state pension age. Men can claim pension credit once they reach the state pension age of a woman with the same date of birth as them.

Pension credit is made up of the following 2 components:

Guarantee Credit

- Guarantee credit tops up your weekly income to £155.60 if you are single and £237.55 if you have a partner
- The amount of Guarantee Credit you receive may increase if you have caring responsibilities or if you are disabled.
- If you and your partner are both of state pension age then either one of you can apply for Guarantee Credit.
- If you meet the qualifying age for pension credit but your partner is under the qualifying age you can still claim Guarantee Credit.

Savings Credit

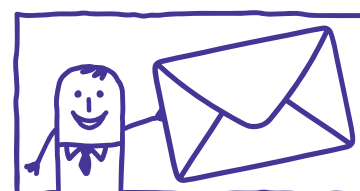
- You may be eligible for Savings Credit if you have some savings or perhaps a second pension.
- You or your partner must be aged 65 or over and living in Great Britain to qualify
- You may receive Savings Credit on its own or you may receive it along with Guarantee Credit.
- The amount of Savings Credit you receive can be up to £13.07 per week if you are single and £14.75 per week if you have a partner
- The amount of Savings Credit you receive may increase if you have caring responsibilities or if you are disabled.

Please note that if you reach state pension age on or after 6 April 2016 you will no longer be eligible to claim Savings Credit unless you are a member of a couple and your partner reached state pension age before this date.

Getting in touch



www.renfrewshire.gov.uk/adviceworks



Visit or write to:
Advice Works, 25 Church
Street, Johnstone PA5 8FA

ADVICE WORKS

Drop-in times



Erskine

Erskine Library
Bridgewater Shopping Centre
Bridgewater Place
PA8 7AA

Friday, 9am to 11am.

Johnstone

Johnstone Town Hall
25 Church Street
PA5 8FA

**Monday to Thursday,
9am to 11am.**

Paisley

Customer Service Centre
Renfrewshire House
Cotton Street
PA1 1BU

**Monday, Tuesday and
Friday, 9am to 11am
and 1pm to 3pm.**

Renfrew

Renfrew Health Centre
Ferry Road
PA4 8SB

**Wednesday and Thursday,
1pm to 3pm.**



HELPLINE
0300 300 1238
10am-4pm Monday to Friday



www.renfrewshire.gov.uk/adviceworks