



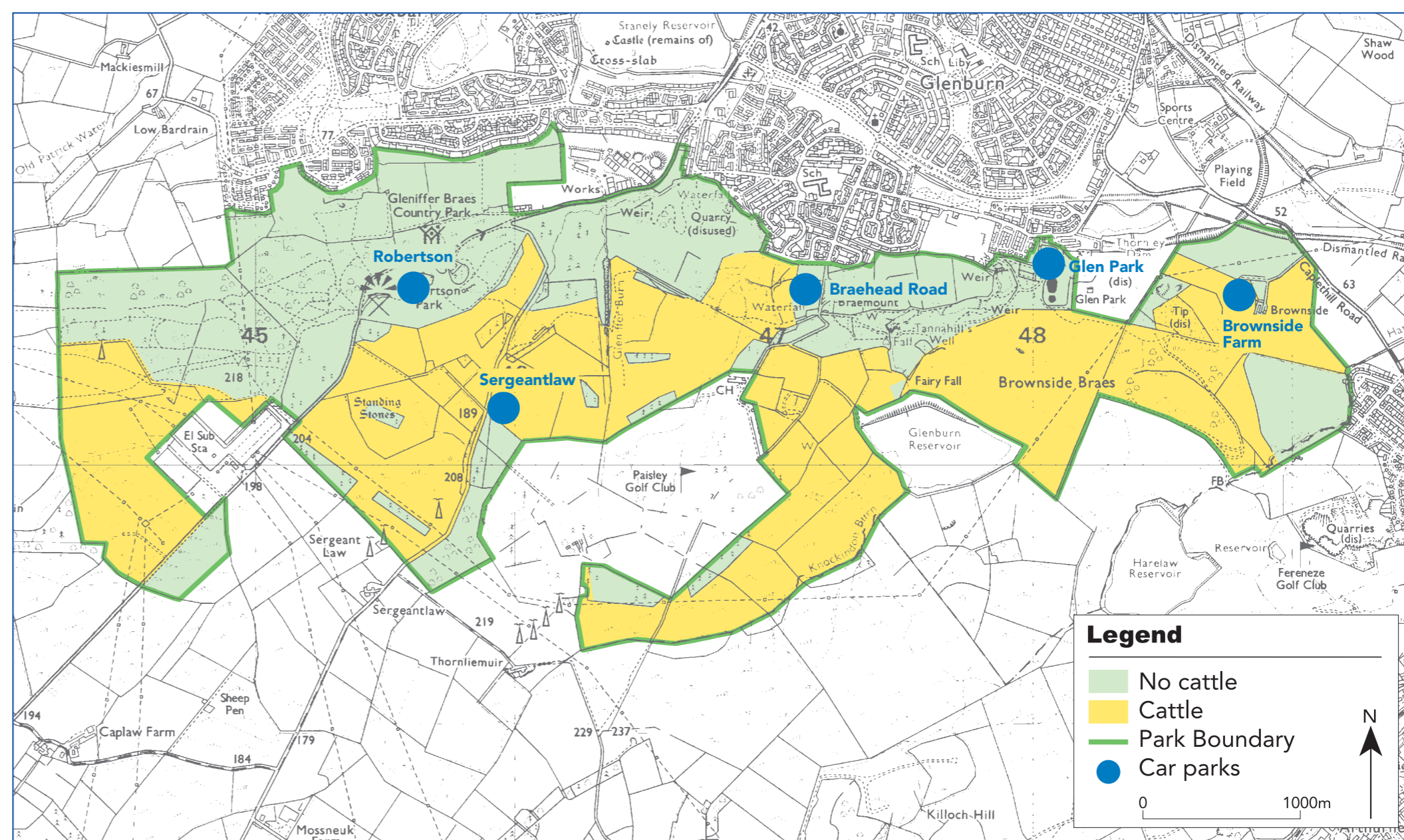
**Cattle can be unpredictable and may be aggressive especially when young calves are present**

Please follow the  
Scottish Outdoor Access Code  
[www.outdooraccess-scotland.com](http://www.outdooraccess-scotland.com)

For further information:-  
Gleniffer Braes Country Park  
Tel: 0141 884 3794

Cattle are used on the land to control the vegetation, preserve biodiversity and retain the wide open spaces which people enjoy.

## For a cattle free walk (green area)



© Crown copyright and database right 2010. All rights reserved. Ordnance Survey Licence number 100023417.

Areas are grazed by cattle at different times of the year.  
Please look out for updates at access points.

## Fields with cattle (yellow area)

Before entering a field check to see what alternatives there are. If you go into a field of cattle keep as far as possible from them and watch them carefully.

## If you have a dog with you

Never let your dog chase or attack farm animals. Keep your dog under close control or on a short lead. Please note that if you have more than one dog, this may disturb the cows further. If cows react aggressively and move towards you, keep calm, let the dog go and take the shortest, safest route out of the field.

Avoid taking your dog into fields where calves are present.

Please remember to pick up your dog's faeces.

Remember to always wash your hands after visiting the countryside.  
Please take your litter home.