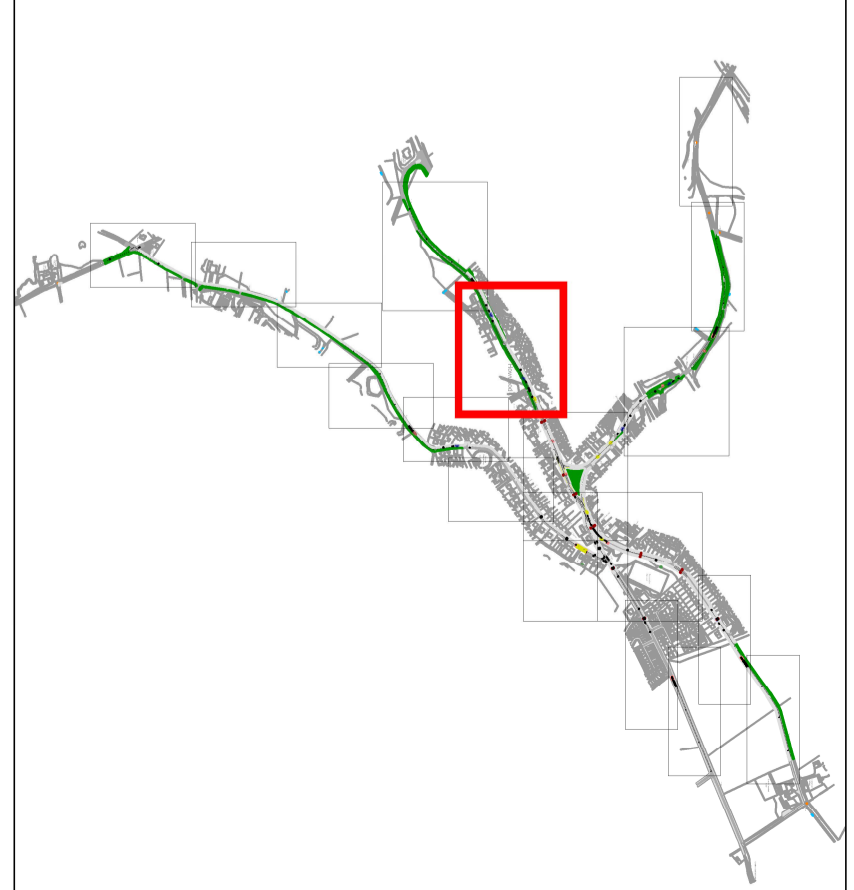


NOTES

- ORDNANCE SURVING MAPPING LICENSE DISCLAIMER
 THIS DRAWING CONTAINS DATA BASED ORDNANCE SURVEY MAPPING. REPRODUCED BY PERMISSION OF HMSO. CROWN COPYRIGHT. ALL RIGHTS RESERVED. 2022. LICENSE NUMBER 0100031073
- DO NOT SCALE FROM THIS DRAWING MANUALLY OR ELECTRONICALLY
 - THIS DRAWING IS TO BE READ IN CONJUNCTION WITH ALL OTHER RELEVANT PROJECT INFORMATION.
 - ALL DATUM LEVELS ARE IN METRES AND DIMENSIONS ARE IN MILLIMETRES UNLESS OTHERWISE STATED.
 - UNLESS OTHERWISE STATED, ALL EXISTING ROAD MARKINGS AND TRAFFIC SIGNS TO BE RETAINED.



Rev	Date	Amendment Details	Dwn	Chk	App?
P01	28.06.2022	FIRST ISSUE	RE	CD	LM
P02	15.09.2022	SECOND ISSUE	RE	CD	LM
P03	12.09.2023	THIRD ISSUE	RE	CD	LM

This drawing should not be relied on or used in circumstances other than those for which it was originally prepared and for which Sweco UK Limited was commissioned. Sweco UK Limited accepts no responsibility for the drawings and any other material prepared by whom a Sweco Limited logo is used in connection with the drawings or other material. Sweco UK Limited is not liable for any damage arising therefrom.
 COPYRIGHT © Sweco 2022

2nd Floor, Quay 2
 139 Fourtlandsbridge
 Edinburgh
 EH3 9QG
 Tel: +44 (0) 131 550 6300
 Web: www.sweco.co.uk



Client
 Renfrewshire Council

Project Title
 VILLAGE TRAFFIC REDUCTION TRIAL STUDY
 RC-CPU-21-125

Drawing Title
 HOWWOOD DESIGN INTERVENTIONS SHEET 2 OF 12

Purpose Of Issue
 PRELIMINARY

Sheet	Sheet Description						
S2	FOR INFORMATION						
Drawn	RE	Designed	RE	Checked	CD	Approved	LM
Sheet Size	A1	Scale	1:500	Sweco Ref	204806	Revision	P03
Drawing Number	204806-SWE-XX-XX-D-H-2002						