

# RENFREWSHIRE COUNCIL BIODIVERSITY DUTY REPORT 2018 - 2020

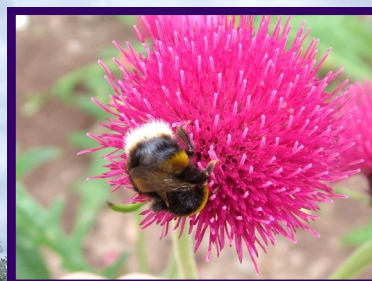




The term 'Biodiversity' is short for biological diversity. It includes every plant and animal, as well as the range of habitats on which all flora and fauna depend.







## RENFREWSHIRE COUNCIL BIODIVERSITY DUTY REPORT 2018 - 2020

The Nature Conservation (Scotland) Act 2004 gives public bodies a duty to further the conservation of biodiversity. The Wildlife and Natural Environment (Scotland) Act 2011 requires public bodies to publish a report every three years on the actions undertaken to meet biodiversity duty.

This report highlights the actions undertaken by Renfrewshire Council to support biodiversity over the period 2018-2020 and is the third Biodiversity Duty Report produced by Renfrewshire Council.

In September 2020 the Scottish Government amended its advice to public bodies and provided a revised template, setting out the main areas that it considers important for public bodies to include in their Biodiversity Duty Reports. This Report follows the Scottish Government template.



## 1. Biodiversity in Renfrewshire

Renfrewshire covers an area of some 270 square kilometres (102 square miles) and on 30 June 2019 had an estimated population of around 179,100 people.

The natural character and biodiversity of Renfrewshire is a valuable asset, providing the basis for many social and economic activities of direct benefit to the local community. Renfrewshire Council provides a range of services which seeks to support and enhance biodiversity conservation in this context. These include:

- Communities, Housing & Planning Services guide the use of land and its development, along with the maintenance and enhancement of places within Renfrewshire, through the Local Development Plan and Development Management functions.
- Environment & Infrastructure Services through the management of parks, cemeteries, Gleniffer Braes Country Park and open spaces.
- Children's Services promote an increasing range of environmental education through schools, encouraging children to become more conscious of biodiversity conservation and other sustainability issues.

The Council seeks to positively use, manage and maintain its land assets to support and enhance biodiversity conservation. This relates particularly to habitats prioritised on the Scottish Biodiversity List and these form the framework of the Renfrewshire Biodiversity Action Plan 2018-2022, which the Council coordinates on behalf of 25 local biodiversity partner organisations.





## 2: Actions to improve biodiversity and connect people with nature

As in previous reporting periods, Renfrewshire Council has continued to protect and improve biodiversity, as well as connecting people with nature, predominantly through a series of innovative partnership projects, as summarised below.

| Section 2: Actions to improve biodiversity and connect people with nature |  |   |  |
|---|--|---|--|
| Ref. No.  | Action   | Inputs/Outputs  | Outcomes   |
| 2.1   | "Renfrewshire Living Waters" Project in partnership with Froglife.   | <ul style="list-style-type: none"> <li>11 ponds created or renovated in and around Paisley - Barshaw Park, Jenny's Well Local Nature Reserve, Gleniffer Braes Country Park.</li> <li>Froglife ran interactive stands at three high profile events: Barshaw Gala Day, Renfrew Gala Day and Grow in Glenburn's open day in Gleniffer Braes.</li> <li>Training programmes in amphibian identification, habitat conservation and practical pond planting sessions at the same three locations.</li> </ul>   | <ul style="list-style-type: none"> <li>Frogs spawning in a high proportion of the ponds, even in the first breeding season.</li> <li>People made more aware of amphibian and pond conservation issues.</li> <li>Increasing numbers of volunteers directly involved in conserving priority habitats.</li> </ul>   |
| 2.2   | Butterfly Conservation Scotland "Bog Squad" project completed at Sergeantlaw Moss in Gleniffer Braes Country Park. | Bog Squad volunteers carried out a series of sessions clearing colonising scrub and installing ditch blocking dams to retain more water in the living surface of the bog.   | <ul style="list-style-type: none"> <li>Lowland Raised Bog habitat in Renfrewshire enhanced.</li> <li>Provided local demonstration project for peatland conservation techniques.</li> <li>Increasing numbers of volunteers directly involved in conserving priority habitats.</li> </ul>  |
| 2.3   | Implementation of Muirshiel Country Park Woodland Management Plan 2016-2025  | <ul style="list-style-type: none"> <li>Removal of 7ha of mature Sitka Spruce during winter 2017/18. 4000 native trees had been planted by June 2020 over 5ha of the cleared area, including Scots pine, silver birch, downy birch, common alder, hazel, rowan and oak. The rare aspen trees, planted in 2018, were also growing well two years later.</li> <li>Remaining 2ha left unplanted to protect an area of blanket bog which extends into the Country Park from surrounding moorland.</li> </ul> | <ul style="list-style-type: none"> <li>Extent of Scottish Biodiversity List priority habitats, Upland Birchwood, Upland Oakwood and Lowland Mixed Deciduous Woodland, increased.</li> <li>Increasing numbers of volunteers directly involved in conserving priority habitats.</li> <li>Area of upland blanket bog (another Scottish Biodiversity List priority habitat) enhanced.</li> </ul> |



## Section 2: Actions to improve biodiversity and connect people with nature

| Ref. No. | Action  | Inputs/Outputs  | Outcomes   |
|----------|---|---|--|
| 2.4      | Cample Burn Juniper Conservation Project in Clyde Muirshiel Regional Park.  | Planting and maintenance of the 750 planted juniper, aspen and eared willow has been carried out during this period, using volunteers and partner organisations to facilitate the project.  | The planted trees, along with protected blueberry and heather, are establishing an enhanced upland habitat and providing a local rewilding demonstration project   |
| 2.5      | Support for Castle Semple Volunteer Group.  | In 2018/19 Clyde Muirshiel staff helped the Group to make several successful grant applications to support its activities.  | Group delivered 1,493 hours of voluntary biodiversity conservation work on tree planting, alien species removal, hedge maintenance, litter removal and wildflower garden work.   |
| 2.6      | Clyde Muirshiel Regional Park staff managing conservation volunteers  | Supervised volunteering hours:<br>2017/18 1,900<br>2018/19 1,784<br>2019/20 2,123   | <ul style="list-style-type: none"> <li>Equivalent to 1.3 FTE members of staff working on important habitat improvements up until Covid-19 prevented group volunteering activities.</li> <li>Key milestone was Regional Park's first ever pair of nesting Ospreys breeding successfully in 2018, raising two chicks.</li> </ul> |
| 2.7      | Volunteers at Gleniffer Braes Country Park led by on-site staff from Council's Environment & Infrastructure Services. | Supervised volunteering hours:<br>2018 514<br>2019 401<br>2020 72 (activities curtailed by Covid-19)  | Rhododendrons controlled, hedgerows managed, litter lifted, trees planted, sensory garden restored, bug hotels constructed and erected, scrub managed, pond planting, access improved and ditches cleared.   |
| 2.8      | Glasgow & Clyde Valley Green Network for Habitats   | <ul style="list-style-type: none"> <li>Data collection stage included Council organising workshops for local biodiversity organisations to input data and advice to habitat opportunity mapping process.</li> <li>Continuing inputs by Council to habitat opportunity maps produced by Glasgow &amp; Clyde Valley Green Network Partnership.</li> </ul> | Outputs provide the opportunity to link Renfrewshire's habitat networks with wider framework across the Glasgow & Clyde Valley area and Central Scotland Green Network area.   |





## Section 2: Actions to improve biodiversity and connect people with nature

| Ref. No. | Action                                   | Inputs/Outputs   | Outcomes   |
|----------|--|--|--|
| 2.9      | Planned Dargavel Community Woodland Park | Meeting between Renfrewshire Council, BAE Systems and Government Agencies, including Scottish Environmental Protection Agency, Scottish Natural Heritage, Scottish Forestry, West of Scotland Archaeology Service, to discuss regeneration opportunities which could be incorporated into the conservation management plan required from BAE Systems . | Priorities for future conservation management to ensure benefits for biodiversity and future site users are maximised. |



### 3: Mainstreaming

Renfrewshire Council has continued to make good progress in mainstreaming biodiversity duties into core activities and has taken several opportunities to integrate biodiversity conservation into corporate projects, plans and strategies.

| Section 3: Mainstreaming |  |  |  |
|--------------------------|--|--|--|
| Ref. No.                 | Action   | Inputs/Outputs   | Outcomes   |
| 3.1                      | Council plays lead role in supporting and implementing the Renfrewshire Biodiversity Action Plan 2018 - 2022 | <ul style="list-style-type: none"> <li>Public consultation on Plan completed in February 2018.</li> <li>Council's Communities, Housing &amp; Planning Policy Board approved Plan in May 2018.</li> <li>Officer time dedicated to coordinating implementation of the Biodiversity Action Plan throughout reporting period.</li> </ul>   | <ul style="list-style-type: none"> <li>25 partner organisations actively supporting biodiversity conservation locally.</li> <li>Improved levels of public awareness of biodiversity conservation in Renfrewshire.</li> </ul> |
| 3.2                      | Renfrewshire Local Development Plan - Proposed Plan - 2019 reached the examination stage in 2020.            | <ul style="list-style-type: none"> <li>Policy ENV 2 provides protection and encourages enhancement of a variety of features which make up Renfrewshire's natural heritage.</li> <li>The Spatial Strategy for Places recognises the importance of enhancing and strengthening the Green Network by preparing and delivering a Green Network Strategy.</li> </ul>  | <ul style="list-style-type: none"> <li>Biodiversity continues to be protected through the Council's planning policy and processes.</li> <li>Biodiversity enhancement is supported and encouraged.</li> </ul>                 |
| 3.3                      | Renfrewshire Vacant and Derelict Land Strategy (2020)  | <ul style="list-style-type: none"> <li>Encourages the creation of amenity green space, biodiversity enhancements, green corridors/links and actions to 'clean-up' vacant and derelict land</li> <li>The Action Plan commits the Council to engage with local communities regarding the future use of small sites not recorded on the vacant land register and work in partnership to identify sites which may be suitable for greening, growing, planting or biodiversity opportunities and publicise these for Renfrewshire's Communities.</li> </ul> | Renfrewshire Council endorses a naturalising approach to regenerating vacant and derelict land, as such sites sometimes develop interesting plant and animal populations with deliberate human intervention.                 |
| 3.4                      | Procurement policies and practices   | Procurement Framework Agreements require an environmental policy to be submitted with tenders.   | Increased awareness of biodiversity in business sectors.   |



| Section 3: Mainstreaming |   |   |  |
|--------------------------|---|---|--|
| Ref. No.                 | Action  | Inputs/Outputs  | Outcomes   |
| 3.5                      | Employing authority for Clyde Muirshiel Regional Park Authority | Five year strategy for Clyde Muirshiel (2016) supports the park an attractive and ecologically important visitor destination with increased biodiversity value.   | <ul style="list-style-type: none"> <li>Woodland, moorland, wetland, loch and coastal areas are effectively managed and enhanced;</li> <li>Biodiversity is effectively conserved;</li> <li>Best practice is shared and utilised.</li> </ul> |
| 3.6                      | Renfrewshire Community Plan 2017-2027                           | <ul style="list-style-type: none"> <li>Supports healthy lifestyles and wellbeing of communities.</li> <li>Public consultation supporting preparation of the plan using the Place Standard includes an evaluation of “natural space” as one of 14 criteria.</li> </ul> | Renfrewshire Council has opportunity to communicate biodiversity conservation message to its 22 community planning partners.   |





#### 4: Nature-based solutions, climate change and biodiversity

Renfrewshire Council has continued to make good progress in developing and implementing a positive response to the Climate Emergency which it declared on 27 June 2019, committing to making Renfrewshire carbon neutral by 2030. This response recognises the potential role of biodiversity in achieving the carbon neutrality target and includes nature-based solutions.

| Section 4: Nature-based solutions, climate change and biodiversity |  |   |  |
|--|--|---|--|
| Ref. No.   | Action   | Inputs/Outputs  | Outcomes   |
| 4.1  | Renfrewshire Council Climate Emergency Declaration, 27 June 2019 | <ul style="list-style-type: none"><li>All-party Climate Emergency Working Group set up to gather evidence from service specialists and outside agencies, and then report back to Council by February 2020 with an Action Plan. Reported findings and recommendations to Full Council on 27 February 2020.</li><li>Evidence about CO<sub>2</sub> sequestration and storage capability of semi-natural vegetation—especially peatlands—presented to Working Group on 5 December 2019.</li></ul> | Increased awareness of issues amongst a range of stakeholders.                       |
| 4.2  | Renfrewshire Local Development Plan - Draft Proposed Plan - 2019 | Policy 13 (Flooding and Drainage) recognises the importance of the management of flood risk through natural flood management and green infrastructure within the context of a flood management scheme. It also states that flood measures should have a positive effect on the water environment as well as the natural heritage interests of the site and land surrounding the site.   | Additional habitats potentially created as a result of flood management initiatives. |





## 5: Public engagement and staff development

Renfrewshire Council has continued to deploy resources to promote biodiversity conservation throughout its communities and worked with partners to maximise the benefits of these efforts. New technologies have been used where appropriate to reach wider audiences and skills development in these new technologies is becoming an important feature of staff training activities.

| Section 5: Public engagement and staff development |   |   |   |
|--|---|---|---|
| Ref. No.   | Action  | Inputs/Outputs  | Outcomes  |
| 5.1  | Co-ordination of the Local Biodiversity Action Plan Steering Group for Renfrewshire, East Renfrewshire and Inverclyde.      | <ul style="list-style-type: none"> <li>4 meetings held between 2018 and 2020 and electronic communications coordinated during this period.</li> <li>Electronic communications maintained and reinforced during 2020's Covid-19 lockdown restrictions.</li> <li>Membership expanded from 27 to 35 organisations during this reporting period.</li> </ul>                                 | <ul style="list-style-type: none"> <li>Implementing Renfrewshire Biodiversity Action Plan.</li> <li>Regular liaison has resulted in practical conservation works on the ground in Renfrewshire.</li> </ul>  |
| 5.2  | Renfrewshire Growing Grounds Forum (coordinated by Renfrewshire Council and Renfrewshire Health & Social Care Partnership). | <ul style="list-style-type: none"> <li>9 meetings held with an average attendance of 14 people.</li> <li>Regular electronic communications between meetings, intensified during the Covid-19 lockdown in the absence of face-to-face meetings.</li> <li>Membership of the Forum has expanded from 43 to 53 organisations during this period.</li> </ul>                                 | <ul style="list-style-type: none"> <li>Increased number of organisations responding to opportunities to incorporate biodiversity conservation into their activities, e.g. ponds, orchards, wild areas, beehives, bug hotels, wild flower planting projects, schools work.</li> <li>Closer links between biodiversity conservation and health awareness activities.</li> </ul> |
| 5.3  | Renfrewshire Council website and associated social media channels.  | <ul style="list-style-type: none"> <li>Renfrewshire Council website has been updated and the biodiversity pages expanded to include pages about local conservation projects, places to enjoy biodiversity in Renfrewshire and summaries of designated sites.</li> <li>Social media channels have been used for consultation purposes, e.g. for the Biodiversity Action Plan.</li> </ul> | Increased awareness of Renfrewshire's biodiversity and opportunities to become involved in biodiversity conservation initiatives.   |

## Section 5: Public engagement and staff development

| Ref. No. | Action  | Inputs/Outputs  | Outcomes  |
|----------|---|---|---|
| 5.4      | Renfrewshire Leisure: Natural History Department  | Paisley Museum Reimagined project in full swing during this period, a 4 year long £42m transformation which - amongst many other things - will bring new life to the natural history collections and exhibits. In the meantime, the natural history collections have been open to the public via guided tours of Paisley: The Secret Collection, the new storage facility in the town's High Street.  | Targeted fourfold increase in visitor numbers (i.e. 125,000 per annum) after reopening in 2022, so clear opportunities for raised awareness and increased participation in biodiversity conservation.                 |
| 5.5      | Environment and Infrastructure Services: staff deployed for outdoor environmental education and interpretation. | <ul style="list-style-type: none"> <li>• Environmental education provided at Gleniffer Braes Country Park for 86 pupils in 2018, 39 in 2019 and 3 in 2020.</li> <li>• Face-to-face interpretation provided at a number of parks and local nature reserves in the Paisley area for 194 adults in 2018, 161 in 2019 and 3 in 2020 (prior to Covid-19 lockdown)</li> <li>• Six nurseries using the woodlands at Gleniffer Braes Country Park for Forest Kindergarten activities in 2018 and 1 in 2019 and 2020.</li> <li>• Wide variety of other groups using Gleniffer Braes for self-programming or staff led activities.</li> </ul> | Raised awareness of Renfrewshire's biodiversity and the need for biodiversity conservation.   |
| 5.6      | Renfrewshire Schools supporting biodiversity education.   | Keep Scotland Beautiful website records that 125 educational establishments in Renfrewshire registered with "Eco-Schools" sustainable schools programme and that 40 Green Flags have been earned.   | <ul style="list-style-type: none"> <li>• Biodiversity is incorporated into activities across the school curriculum.</li> <li>• Raised awareness and increasing participation in biodiversity conservation.</li> </ul> |



## Section 5: Public engagement and staff development

| Ref. No. | Action  | Inputs/Outputs  | Outcomes  |
|----------|---|---|---|
| 5.7      | Clyde Muirshiel Regional Park's Ranger led educational programme    | <ul style="list-style-type: none"> <li>Environmental education sessions were delivered to 7,769 people in 2017/18, from pre-nursery up to secondary and tertiary education.</li> <li>8,758 children and young people took part in outdoor learning and eco school activities in 2018/19</li> <li>In 2017/18 6,352 people attended 103 Ranger supported events. Work has been done with nine schools on their Eco-School Awards.</li> <li>Digital marketing and promotional activities support many education and outdoor learning messages and information provision with over one hundred thousand people engaging online in 2017/18.</li> </ul> | <ul style="list-style-type: none"> <li>Raised awareness and increased participation in biodiversity conservation.</li> <li>Cample Burn Juniper Restoration Project enhanced, allowing maintenance of the 750 planted juniper, aspen and eared willow has to be completed. All these trees, along with blueberry and heather – create a 'local' wild upland.</li> <li>Uncommon reptiles surveyed at Muirshiel Country Park, woodland surveys completed, water quality monitored at Castle Semple Loch SSSI.</li> </ul> |
| 5.8      | Tag-n-Track Project implementation at Clyde Muirshiel Regional Park | Project continued during this period, developing and promoting activities for schools and volunteers, including training courses on fieldcraft, species ecology and conservation.   | <ul style="list-style-type: none"> <li>More school pupils have participated in biodiversity focused activities and have raised awareness of biodiversity conservation issues.</li> <li>Potential for volunteers with new biodiversity conservation skills.</li> </ul>   |



## Section 5: Public engagement and staff development

| Ref. No. | Action  | Inputs/Outputs  | Outcomes   |
|----------|---|---|--|
| 5.9      | Muirshiel Country Park's "Branching Out" mental health recovery programme                         | 585 participants in 2017/18.  | Improved health and quality of life for the people of Renfrewshire, through their direct involvement in investing in the care of green space, nature and landscapes. |
| 5.10     | Clyde Muirshiel Regional Park's extensive use of social media channels on PCs and mobile devices. | <p>Clyde Muirshiel Regional Park has a growing presence on social media:</p> <ul style="list-style-type: none"> <li>• Facebook "likes": 2,500 on by March 2018 and 3,000 by March 2019,</li> <li>• 1,800 Twitter followers by March 2018 and 1,900 a year later,</li> <li>• 55,000 video views on YouTube by March 2018 had risen to 80,000 a year later.</li> <li>• 550 followers on Instagram by March 2018 and 900 by March 2019.</li> </ul> | Wider range of people of Clyde Muirshiel Regional Park, its biodiversity and opportunities to become involved directly in its conservation.                          |
| 5.11     | Specialist training for staff, which supports development of biodiversity conservation skills.    | In 2018 Clyde Muirshiel Regional Park staff attended training in social media integration, mountain woodland conservation and wetland bird survey techniques.   | More staff with appropriate biodiversity conservation and communication skills.  |
| 5.12     | Renfrewshire Council Environment & Infrastructure Services' grass maintenance programme           | 2020's Covid-19 lockdown and resulting suspension of grass cutting programmes gave opportunity to investigate future opportunities to amend cutting regimes on selected areas to favour biodiversity conservation. After survey and evaluation of 122 sites, results were subject of consultation, using web site, direct emails, targeted letters and social media.  |  |



## 6: Research and monitoring

Biodiversity research and monitoring has continued during this period. Its resource demanding nature means that most of this work is undertaken to support specific policies or to guide improved management of Council land.

| Section 6: Research and monitoring |  |   |  |
|------------------------------------|--|---|--|
| Ref. No.                           | Action   | Inputs/Outputs  | Outcomes   |
| 6.1.                               | Review of Sites of Importance for Nature Conservation (SINCs)  | To date 41 SINCs resurveyed and documented in schedule format.  | Availability of enhanced information on Renfrewshire's local priority biodiversity sites.  |
| 6.2.                               | Clyde Muirshiel Regional Park  | <ul style="list-style-type: none"> <li>57 habitat surveys and monitoring activities were undertaken each year in 2017/18 and 2018/19. Data from these were fed into appropriate national survey databanks for butterflies, dragonflies, plants/vegetation, reptiles and birds.</li> <li>Water quality at Castle Semple Loch monitored and reported, to check for levels of chemicals associated with algal blooms.</li> </ul> | <ul style="list-style-type: none"> <li>Improved knowledge of numbers and distribution of species available locally and at a national level.</li> <li>Risk of damaging algal blooms affecting biodiversity and recreational uses is evaluated effectively.</li> </ul> |
| 6.3                                | Renfrewshire Council Environment & Infrastructure Services' grass maintenance programme - 2020 public consultation exercise. | 122 grass "panels" subject to ecological survey work in July/August 2020, with biodiversity evaluation reports produced for each site.  | Up-to-date field survey biodiversity information available.  |





## 7. Biodiversity highlights and challenges

In a year when the Covid-19 pandemic has overwhelmingly dominated the focus of everyone, it is inevitable that the repercussions of the pandemic should also dominate a Biodiversity Duty Report's attempt to predict future challenges. It also means that highlights from the last three years have to be viewed in the context of the impacts the pandemic will have on Renfrewshire's economy, health and social structures. The report has placed a strong emphasis on partnerships and cross-sector working and biodiversity conservation will have to be linked even more firmly with community recovery in order to progress targets in future years.

| Section 7: Biodiversity highlights and challenges |   |   |   |
|---|---|---|---|
| Ref. No.  | Action  | Inputs/Outputs  | Outcomes  |
| 7.1   | <b>HIGHLIGHT:</b> Renfrewshire Biodiversity Action Plan 2018-2022 and its ongoing implementation during this reporting period.          | <ul style="list-style-type: none"> <li>Following public consultation, approved and published by Renfrewshire Council in May 2018.</li> <li>Implementation of actions underway and progressing as resources permit.</li> </ul>   | <ul style="list-style-type: none"> <li>Partnership approach to delivering biodiversity conservation initiatives supported.</li> <li>Growing community interest in biodiversity conservation.</li> </ul>   |
| 7.2   | <b>HIGHLIGHT:</b> partnership approach started to yield positive results for biodiversity on the ground.                                | <ul style="list-style-type: none"> <li>Renfrewshire Living Waters project with Froglife.</li> <li>Butterfly Conservation Scotland's Bog Squad volunteers completing habitat enhancements at Sergeantlaw Moss.</li> <li>New Council funding awarded to Foxbar Community Garden Group to develop plans to regenerate vacant land.</li> <li>Erskine Community Allotments boosting populations of pollinating insects on Council owned land.</li> </ul> | Greater community engagement and voluntary involvement in biodiversity conservation. Council's (and partner organisations') resources used efficiently and effectively in a challenging economic environment.   |
| 7.3   | <b>CHALLENGE:</b> integrating biodiversity conservation into Council Covid-19 Recovery Strategies                                       | <ul style="list-style-type: none"> <li>Environment &amp; Infrastructure Services reviewing parts of its grass cutting programmes and consulting public about proposed changes.</li> <li>Schools encouraged to make greater use of outdoor environment for lessons.</li> </ul>   |   |
| 7.4   | <b>CHALLENGE:</b> scaling up biodiversity conservation work to meet need for increased carbon sequestration by semi-natural vegetation. | <ul style="list-style-type: none"> <li>Plans for peat restoration projects on the ground being developed.</li> <li>Preparation of a Renfrewshire Forestry &amp; Woodland Strategy.</li> </ul>   | <ul style="list-style-type: none"> <li>Renfrewshire Council in a position to achieve its target of carbon neutral Renfrewshire by 2030.</li> <li>Biodiversity Action Plan commitments to landscape scale habitat enhancements achieved</li> <li>Habitat networks strengthened.</li> </ul> |

## 8. Contribution to national and international targets

Council activities highlighted within this report make a positive contribution to targets identified in Scotland's Biodiversity Strategy: 2020 Challenge.

| Section 8: <u>Contribution to national and international targets</u><br>Healthy Ecosystems: Scotland's ecosystems are restored to good ecological health so that they provide robust ecosystem services and build our natural capital. | Contribute to Scottish Biodiversity Strategy National Outcome? | Renfrewshire Council contributions  |
|--|--|---|
| Encourage and support ecosystem restoration and management, especially in catchments that have experienced the greatest degradation.   | Yes  | <ul style="list-style-type: none"> <li>Woodland Management Plan for Muirshiel Country Park now being implemented to create semi-natural woodland and restore peatland habitats.</li> </ul>                                      |
| Use assessments of ecosystem health at a catchment level to determine actions.   | Yes  | <ul style="list-style-type: none"> <li>In-house review of SINCs continuing.</li> <li>Biodiversity monitoring in Clyde Muirshiel Regional Park .</li> <li>Grassland survey and evaluation to guide future management.</li> </ul> |
| Government and public bodies will work together towards a shared agenda for action to restore ecosystem health at a catchment-scale across Scotland.   | Yes  | <ul style="list-style-type: none"> <li>LBAP Steering Group for Renfrewshire, East Renfrewshire and Inverclyde.</li> <li>Involvement in Glasgow &amp; Clyde Valley Green Network Blueprint for habitats.</li> </ul>              |
| Establish plans and decisions about land use based on an understanding of ecosystems. Take full account of land use impacts on the ecosystem services that underpin social, economic and environmental health.                         | Yes  | <ul style="list-style-type: none"> <li>Biodiversity conservation and enhancement embedded within Renfrewshire Local Development Plan.</li> <li>Renfrewshire Biodiversity Action Plan 2018 - 2022 being implemented.</li> </ul>  |







| Section 6: <u>Contribution to national and international targets</u><br>Natural Capital: Natural resources contribute to stronger sustainable economic growth in Scotland, and we increase our natural capital to pass on to the next generation. | Contribute to Scottish Biodiversity Strategy National Outcome? | Renfrewshire Council contributions   |
|---|--|--|
| Encourage wide acceptance and use of the Natural Capital Asset Index, including a comparable measure for the marine environment.  | No   | <ul style="list-style-type: none"><li>• Outside remit of Renfrewshire Council.</li></ul>   |
| Use this index to influence decision-making and market-based approaches, so that the wider monetary and non-monetary values for ecosystem services are recognised and accounted for   | No   | <ul style="list-style-type: none"><li>• Outside remit of Renfrewshire Council.</li></ul>   |
| Undertake a major programme of peatland conservation, management and restoration.   | Yes  | <ul style="list-style-type: none"><li>• Demonstration project at Sergeantlaw Moss.</li><li>• Early discussions underway about storing other sites.</li></ul> |



| Section 6: <u>Contribution to national and international targets</u><br>Biodiversity, Health and Quality of Life: Improved health and quality of life for the people of Scotland, through investment in the care of green space, nature and landscapes.  | Contribute to Scottish Biodiversity Strategy National Outcome? | Renfrewshire Council contributions  |
|--|--|---|
| Provide opportunities for everyone to experience and enjoy nature regularly, with a particular focus on disadvantaged groups.  | Yes  | Staff led events and activities at Clyde Muirshiel Regional Park and Gleniffer Braes Country Park.<br>Renfrewshire Council website provides information about several biodiversity-rich places where public access is readily available, including sites owned and managed by partner organisations.  |
| Support local authorities and communities to improve local environments and enhance biodiversity using green space and green networks, allowing nature to flourish and so enhancing the quality of life for people who live there.                       | Yes  | Partnership projects completed with other organisations, concentrating on areas in and around settlements. <ul style="list-style-type: none"> <li>• Volunteer activity at Clyde Muirshiel Regional Park</li> <li>• Renfrewshire Growing Grounds Forum supported existing and aspiring growing groups.</li> </ul>  |
| Build on good practice being developed by the National Health Service (NHS) and others to help encourage greenspace, green exercise and social prescribing initiatives that will improve health and wellbeing through connecting people with nature.     | Yes  | <ul style="list-style-type: none"> <li>• Renfrewshire Growing Grounds Forum supported existing and aspiring growing groups.</li> <li>• Staff-led activities at Clyde Muirshiel Regional Park and at Gleniffer Braes Country Park.</li> </ul>  |
| Increase access to nature within and close to schools, and support teachers in developing the role of outdoor learning across the Curriculum for Excellence.   | Yes  | <ul style="list-style-type: none"> <li>• High proportion of schools participating in the Eco-Schools sustainable schools programme.</li> <li>• Opportunities from new focus on lesson outdoors .</li> </ul>   |
| Encourage public organisations and businesses to review their responsibilities and action for biodiversity, and recognise that increasing their positive contribution to nature and landscapes can help meet their corporate priorities and performance. | Yes  | <ul style="list-style-type: none"> <li>• 2016 Clyde Muirshiel Regional Park Strategy specifically encourages “increased biodiversity value”.</li> <li>• Renfrewshire Biodiversity Action Plan 2018 - 2022 aims to reach all economic sectors.</li> <li>• Close liaison with BAE Systems regarding future 450ha Dargavel Community Woodland Park as part of regenerating former ordnance factory grounds.</li> </ul> |

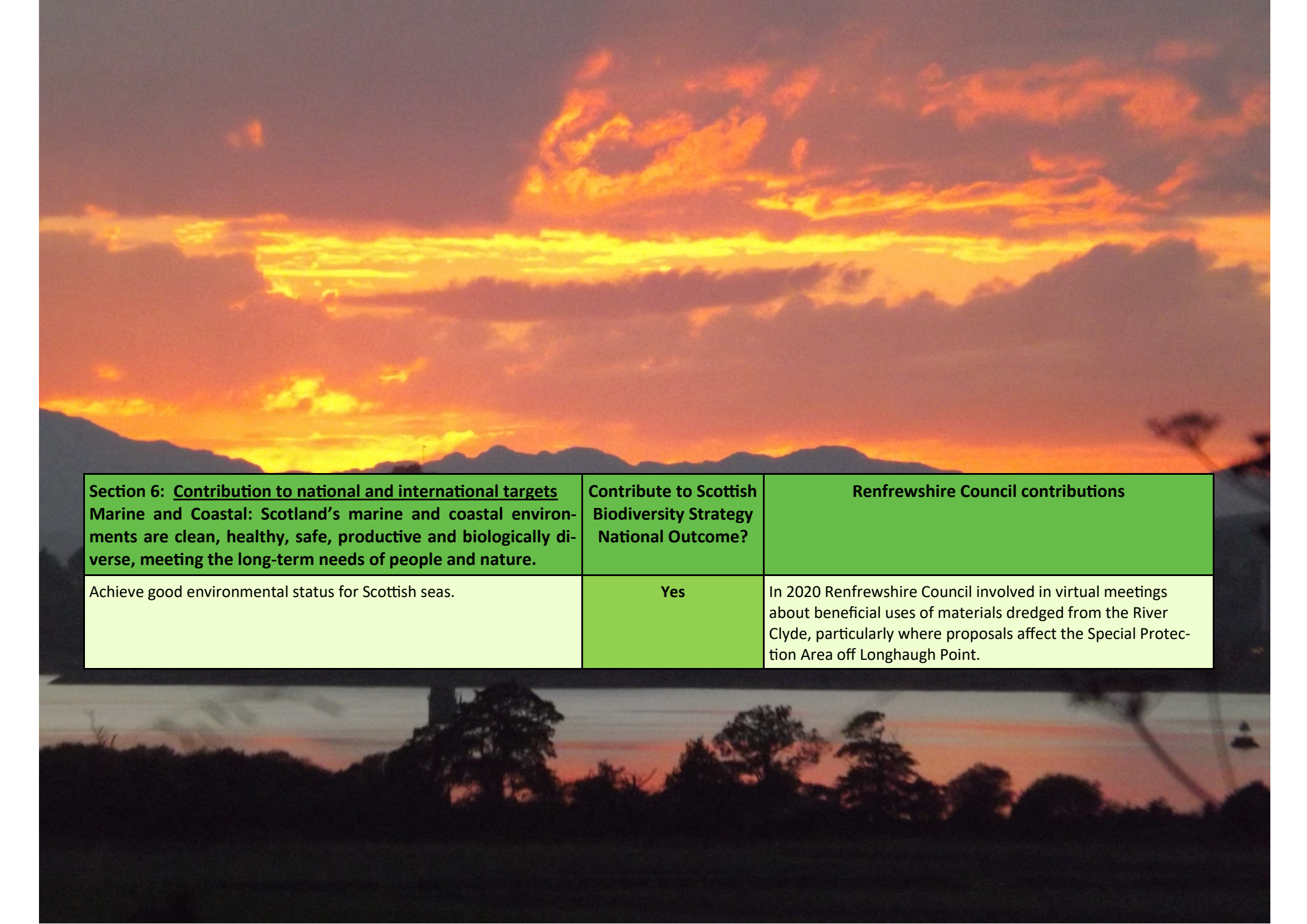


| Section 6: <u>Contribution to national and international targets</u><br>Wildlife, Habitats and Protected Places: The special value and international importance of Scotland's nature and geodiversity is assured, wildlife is faring well, and we have a highly effective network of protected places. | Contribute to Scottish Biodiversity Strategy National Outcome? | Renfrewshire Council contributions  |
|--|--|---|
| Ensure that the management of protected places for nature also provides wider public benefits.   | Yes  | <ul style="list-style-type: none"> <li>• Policies embedded within Renfrewshire Local Development Plan.</li> <li>• Clyde Muirshiel Regional Park Strategy 2016.</li> </ul>   |
| Integrate protected areas policy with action for wider habitats to combat fragmentation and restore key habitats.  | Yes  | <ul style="list-style-type: none"> <li>• Policies embedded within Renfrewshire Local Development Plan processes.</li> <li>• Clyde Muirshiel Regional Park Strategy 2016 .</li> <li>• Renfrewshire Biodiversity Action Plan 2018 - 2022.</li> </ul>                                    |
| Involve many more people than at present in this work and improve understanding of the poorly known elements of nature   | Yes  | <ul style="list-style-type: none"> <li>• Main strand of Renfrewshire Biodiversity Action Plan 2018 - 2022.</li> <li>• Growing use of websites and social media.</li> <li>• "Tag-n-Track" project in Clyde Muirshiel Regional Park.</li> <li>• LBAP Steering Group support.</li> </ul> |



| <b>Section 6: <u>Contribution to national and international targets</u></b><br><b>Land and freshwater management: Nature is faring well, and ecosystems are resilient as a result of sustainable land and water management.</b> | <b>Contribute to Scottish Biodiversity Strategy National Outcome?</b> | <b>Renfrewshire Council contributions</b>  |
|---|---|--|
| Promote an ecosystem approach to land management that fosters sustainable use of natural resources and puts biodiversity at the heart of land-use planning and decision-making.   | <b>Yes</b>  | <ul style="list-style-type: none"> <li>• Green network policies embedded within Renfrewshire Local Development Plan.</li> <li>• Clyde Muirshiel Regional Park Strategy 2016.</li> <li>• Renfrewshire Biodiversity Action Plan 2018—2022.</li> <li>• Involvement in regional green network strategies.</li> </ul> |
| Ensure that measures taken forward under the Common Agricultural Policy encourage land managers to develop and retain the diversity of wildlife habitats and landscape features.  | <b>No</b>   | <ul style="list-style-type: none"> <li>• Outside remit of Renfrewshire Council.</li> </ul>   |
| Support 'High Nature Value' farming and forestry  | <b>No</b>   | <ul style="list-style-type: none"> <li>• Outside remit of Renfrewshire Council.</li> </ul>   |
| Put in place the management necessary to bring Scotland's protected areas into favourable condition and improve the ecological status of water bodies.  | <b>Yes</b>  | <ul style="list-style-type: none"> <li>• Largely restricted to SSSI/SPA area which fall within Renfrewshire Council ownership in the Renfrewshire Heights SPA and Castle Semple Loch SSSI.</li> </ul>  |
| Ensure that biodiversity and ecosystem objectives are fully integrated into flood risk management plans, and restore wetland habitats and woodlands to provide sustainable flood management.                                    | <b>Yes</b>  | <ul style="list-style-type: none"> <li>• Ongoing through liaison within LBAP Steering Group and as expressed in the Renfrewshire Biodiversity Action Plan 2018 - 2022, Local Development Plan.</li> </ul>  |
| Restore and extend natural habitats as a means of building reserves of carbon and to help mitigate climate change.  | <b>Yes</b>  | <ul style="list-style-type: none"> <li>• Muirshiel Country Park Woodland Management Plan being implemented.</li> <li>• Sergeantlaw Moss conservation works by Butterfly Conservation Scotland's "Bog Squad".</li> </ul>  |
| Provide clear advice to land and water managers on best practice  | <b>Yes</b>  | <ul style="list-style-type: none"> <li>• Ongoing and as requested, particularly in relation to planning applications and enquiries about new forestry proposals.</li> </ul>  |





**Section 6: Contribution to national and international targets**  
**Marine and Coastal: Scotland's marine and coastal environments are clean, healthy, safe, productive and biologically diverse, meeting the long-term needs of people and nature.**

Achieve good environmental status for Scottish seas.

**Contribute to Scottish Biodiversity Strategy National Outcome?**

**Yes**

**Renfrewshire Council contributions**

In 2020 Renfrewshire Council involved in virtual meetings about beneficial uses of materials dredged from the River Clyde, particularly where proposals affect the Special Protection Area off Longhaugh Point.

## FURTHER INFORMATION

For further information please contact:

Strategy & Place Section  
Planning & Housing Service  
Communities, Housing & Planning Services  
Renfrewshire Council  
Renfrewshire House  
Cotton Street  
Paisley  
PA1 1JD

0300 300 0144

[strategyandplace@renfrewshire.gov.uk](mailto:strategyandplace@renfrewshire.gov.uk)

