



Child Benefit



Renfrewshire
Council

What is Child Benefit?

Child Benefit is a benefit that is paid to you if you are responsible for a child, children or young person.

The amount of Child Benefit you receive will depend on the number of children you are responsible for.

You are usually classed as being responsible for a child if that child lives with you, even if you are not their parent.

If the child does not live with you may still qualify for child benefit if you contribute to the cost of providing for the child – as long as the amount you pay is the same or more than the amount of child benefit you get for them. The person who your child lives with must not be claiming child benefit for you to qualify.

How much is Child Benefit?

£20.70 per week for your oldest child
£13.70 per week for each of your other children

Please check online as this amount may change from time to time.

The Child Benefit residence test

You must also pass the residence test in order to qualify for Child Benefit. This means that you and the child must both physically live and have the right to reside in the Great Britain.

How often will I receive Child Benefit?

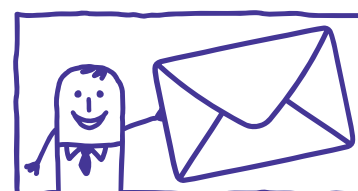
Child Benefit is usually paid every 4 weeks however you may be able to receive your Child Benefit on a weekly basis if you are a single parent or you are in receipt of any the following benefits; Income-related Employment Support Allowance, Income-based Jobseekers Allowance, Income Support or Pension Credit.

Please note: From April 2013 if one person in household earns over £44,000, child benefit will not be paid. Families who already receive child benefit will also lose it if one person in the household earns over £44,000.

Getting in touch



www.renfrewshire.gov.uk/adviceworks



Visit or write to:
Advice Works, 25 Church
Street, Johnstone PA5 8FA

ADVICE WORKS

Drop-in times



Erskine

Erskine Library
Bridgewater Shopping Centre
Bridgewater Place
PA8 7AA

Friday, 9am to 11am.

Johnstone

Johnstone Town Hall
25 Church Street
PA5 8FA

**Monday to Thursday,
9am to 11am.**

Paisley

Customer Service Centre
Renfrewshire House
Cotton Street
PA1 1BU

**Monday, Tuesday and
Friday, 9am to 11am
and 1pm to 3pm.**

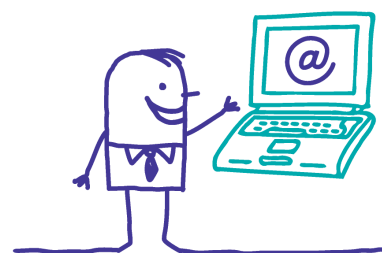
Renfrew

Renfrew Health Centre
Ferry Road
PA4 8SB

**Wednesday and Thursday,
1pm to 3pm.**



HELPLINE
0300 300 1238
10am-4pm Monday to Friday



www.renfrewshire.gov.uk/adviceworks