

Renfrewshire Local Plan Alteration No. 1

Adjustment to Green Belt boundary at Lochwinnoch on Proposals Map F

January 2008



Renfrewshire
Council

Planning & Transport Department

Introduction

The purpose of the Alteration is to correct a cartographic error on the Proposals Map F of the Renfrewshire Local Plan. The Alteration affects only a small area of land on the eastern edge of Lochwinnoch, extending to approx. 0.57ha., and the Alteration clarifies that this area, shown on the attached Alteration Map 1, lies within the Green Belt, and is affected by Green Belt Policy GB1 in the Local Plan.

Background to Alteration

An area of land at Gates Road, Lochwinnoch, identified on the accompanying Alteration Map 1, had been included in the Green Belt designation in the Renfrew District Local Plan. In the process of reviewing and replacing that Plan with the Renfrewshire Local Plan, a review of the boundary of the Green Belt was carried out in 1999 / 2000. This review resulted in a number of minor changes to the Green Belt boundary which were incorporated into the Consultative Draft Renfrewshire Local Plan, which was the subject of a public consultation exercise over the period 12 September to 24 October, 2001. The list of proposed modifications which had grown out of the review of the Green Belt boundary did not include any change to the boundary at Gates Road, Lochwinnoch, reflecting the fact that the Council did not intend to alter the boundary of the Green Belt at this location. The finalised version of the Local Plan was subsequently the subject of a public consultation exercise during the period 25 September 2002 to 5 November, 2002; and ultimately, the Local Plan was adopted by the Council on 7 March, 2006, following a Public Local Inquiry into objections in 2003/04.

Development proposals for a large part of the site brought to the Council's attention the fact that the Proposals Map for the adopted Renfrewshire Local Plan indicates the site lying outwith the Green Belt, and covered instead by policy POL H1, General Residential Policy. Investigations show that this unintended change to the Green Belt boundary had been made to the Consultative Draft version of the Local Plan as a result of a cartographic error, and this altered boundary progressed unnoticed and unchallenged through the next stage, the finalised version of the Local Plan, to the adopted version. The Alteration is considered necessary to achieve absolute clarity as to the development plan policy coverage applying to this area of land.

Alteration to Proposals Map

An area of land at Gates Road, Lochwinnoch, extending to 0.57 ha. and bounded, generally, by Gates Road on the north-west; Lochlip Road on the south-west; and the Paisley to Kilbirnie cycle route on the south-east, is the subject of the change to Proposals Map F. Map F shows the land lying in an un-coloured area of the Map indicating, erroneously, that Local Plan policy H1 applies. To correct this cartographic

error, the Alteration adjusts the Green Belt boundary to include this land within the 'green' area of the Map, indicating that Green Belt policy GB1 applies, and that General Residential Policy H1 does not apply. The accompanying Alteration Map 1 shows the location of the site which is subject of the Alteration, and Alteration Map 2 shows the corrected policy allocation for this land. The Alteration does not involve any change to existing policies in the Renfrewshire Local Plan, nor does it introduce any new policy(ies) to the Local Plan.

Justification

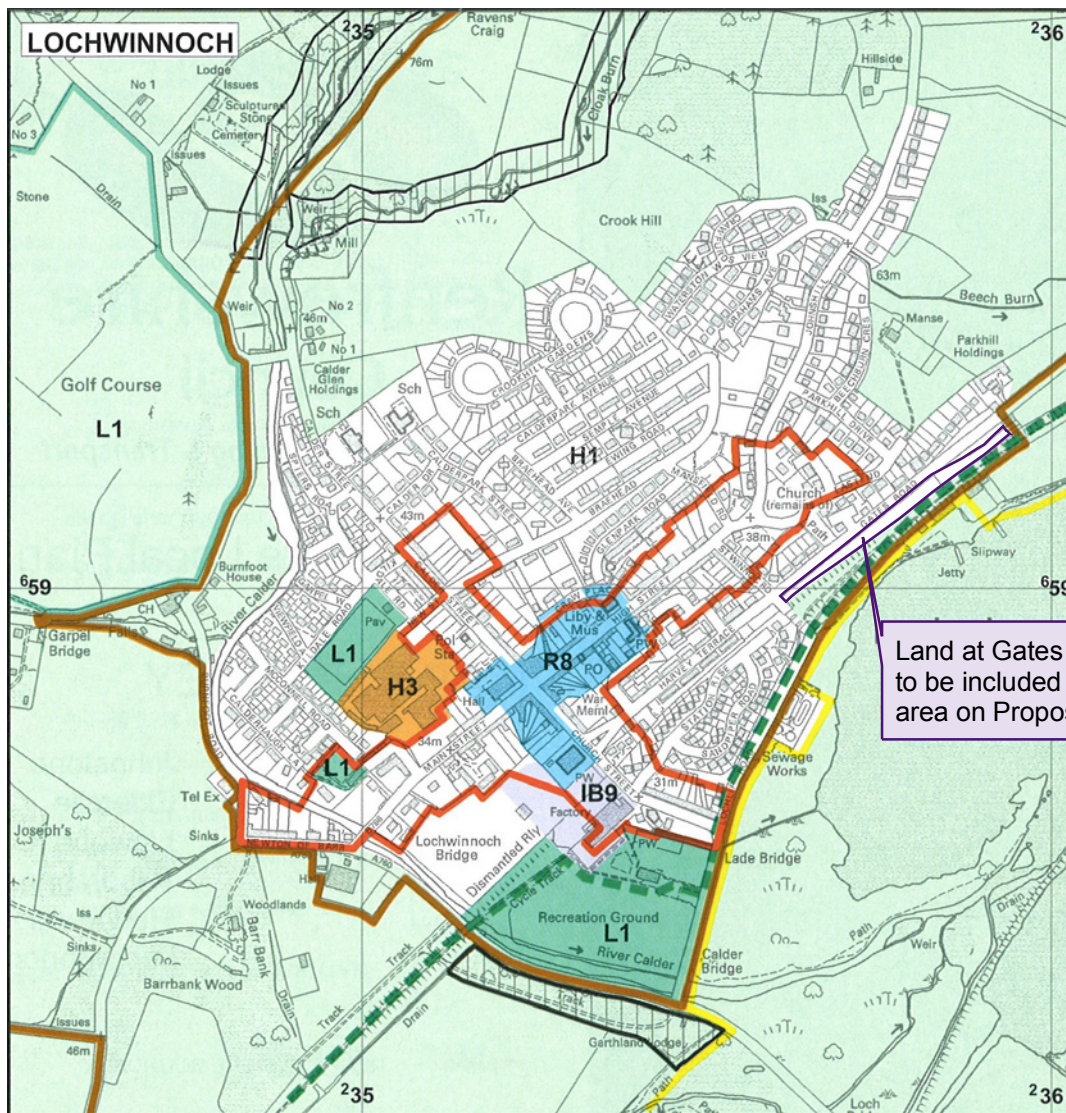
The adjustment to the Renfrewshire Local Plan Proposals Map F accurately reflects the intentions of the Council in applying land use policies in the development plan to the land at Gates Road, Lochwinnoch.

The land at Gates Road was included in the Green Belt in the Renfrew District Local Plan, which was replaced by the Renfrewshire Local Plan. In the course of reviewing the boundaries of the Green Belt no changes to the boundary were identified as necessary at Gates Road, Lochwinnoch.

The change to the Green Belt boundary on the Renfrewshire Local Plan Proposals Map F at this location from that shown on the previous Renfrew District Local Plan occurred as the result of a cartographic error. The error results in a lack of clarity in the Local Plan as to the Council's position in respect of the development plan policy to be applied to this site. The Alteration clarifies this issue by correcting the cartographic error.

Renfrewshire Local Plan Alteration No.1: Adjustment to Green Belt Boundary at Lochwinnoch On Proposals Map F

ALTERATION MAP I



Legend

 Policy GB1 - Green Belt



This map is reproduced from Ordnance Survey material with the permission of Ordnance Survey on behalf of the Controller of Her Majesty's Stationery Office © Crown Copyright. Unauthorised reproduction infringes Crown copyright and may lead to prosecution or civil proceedings. Renfrewshire Council 100023417 2007

Department: Planning and Transport

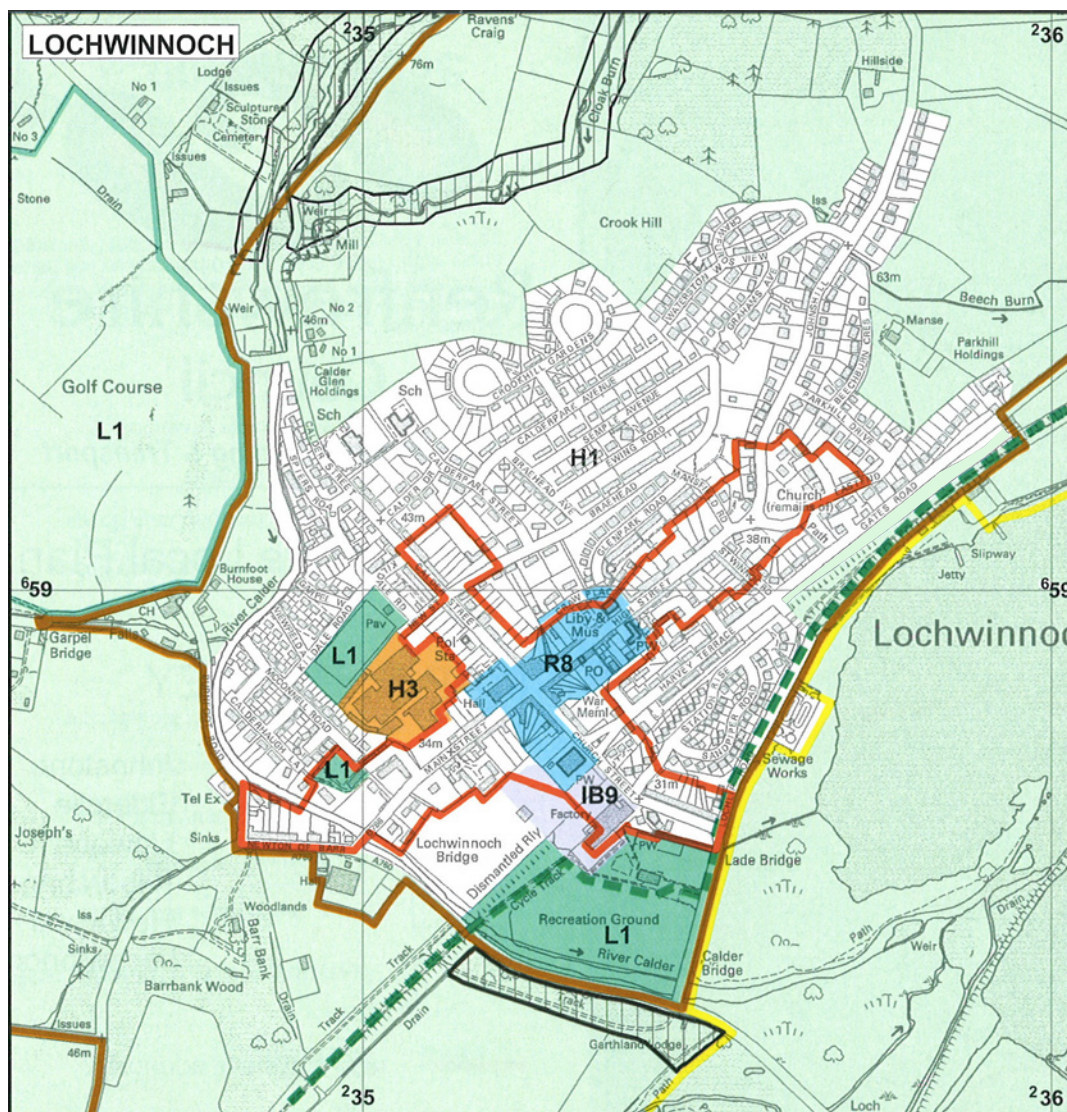
Printed by: C Pollock

Print date: 13/12/07



Renfrewshire Local Plan Alteration No. 1: Adjustment to Green Belt Boundary at Lochwinnoch On Proposals Map F

ALTERATION MAP 2



Legend

 Policy GB1 - Green Belt

PROPOSALS MAP F, LOCHWINNOCH INSET, AS CORRECTED BY THE ALTERATION



This map is reproduced from Ordnance Survey material with the permission of Ordnance Survey on behalf of the Controller of Her Majesty's Stationery Office © Crown Copyright. Unauthorised reproduction infringes Crown copyright and may lead to prosecution or civil proceedings. Renfrewshire Council 100023417 2007

Department: Planning and Transport

Printed by: C Pollock

Print date: 18/12/07



Renfrewshire Local Plan Alteration No. 1
Adjustment to Green Belt boundary at Lochwinnoch on Proposals Map F

For further details contact:
Dept. of Planning & Transport, Renfrewshire Council,
Renfrewshire House, Cotton Street, Paisley, PA1 1LL
Tel; 0141 842 5811 Fax. 0141 842 5040
e-mail. pt@renfrewshire.gov.uk