

# Renfrewshire Core Paths Plan 2022



Renfrewshire  
Council

# Contents

---

The Renfrewshire Core Paths Plan .....	3	Kilbarchan .....	28
Policy Framework.....	4	Howwood .....	32
The Core Paths Plan Review .....	5	Lochwinnoch .....	36
Langbank .....	6	Clyde Muirshiel Regional Park .....	40
Bishopton .....	9	Gleniffer Braes Country Park .....	43
Erskine and Inchinnan .....	13	Johnstone and Elderslie .....	47
Renfrew.....	17	Paisley (North) .....	51
Bridge of Weir, Brookfield and Houston .....	21	Paisley (South).....	55
Linwood .....	26	National Cycle Routes .....	59

© Crown copyright and database rights 2020.  
OS Licence number 100023417. You are permitted  
to use this data solely to enable you to respond to,  
or interact with, the organisation that provided you with  
the data. You are not permitted to copy, sub-licence,  
distribute or sell any of this data to third parties in any  
form.



# The Renfrewshire Core Paths Plan

---

INT

## **The Renfrewshire Core Paths Plan outlines the network of key access routes across Renfrewshire.**

The network of core paths identified in this Plan reflect key routes which aim to:

- Connect communities, settlements and places of interest;
- Provide opportunities for active travel, particularly to schools and places of work;
- Connect people with nature, areas of greenspace and the wider countryside;
- Promote and encourage healthy lifestyles.

This is the second Core Paths Plan for Renfrewshire and replaces the Core Paths Plan adopted in 2009.

The document reflects the requirements of the Land Reform (Scotland) Act 2003 in providing an up to date network of core routes which reflect current circumstances.

Core Paths are recreational and travel routes which allow for ‘reasonable public access’ within each local authority area, as defined by the Act.

The network provides a series of routes for people with all abilities. Not every route is suitable for everyone and the Plan provides information which helps to inform path users on the characteristics of each route.

Under the provisions of the Land Reform (Scotland) Act 2003, owners of land over which access rights apply have a duty to ensure that routes, such as Core Paths, are passable and free from obstruction.



# Policy Framework

---

**The Core Paths Plan reflects a policy framework at national, regional and local levels which promote access to greenspace and active travel to enhance health, wellbeing and quality of life.**

Increased connectivity within Renfrewshire and to networks outwith the council area support the delivery of the Central Scotland Green Network which is a national priority. It also supports the expansion of the Glasgow and the Clyde Valley Green Network, a strategic priority for the City Region as well as delivery of the Green Network at the local level identified in the Renfrewshire Local Development Plan.

Enhancing connections and networks at a local level contributes to the creation of sustainable and thriving communities, a key priority identified in the Renfrewshire Council Plan and Local Outcome Improvement Plan. It also encourages access to greenspace and promotes sustainable modes of travel, reflecting priorities in the Renfrewshire Access Strategy and Cycling Strategy.

# Core Paths Plan Review

---

INT

## **A comprehensive review of the access network has been undertaken to inform the Plan.**

This highlighted that many of the existing Core Path routes remain important connections. The review process also considered the designation of new paths, as well as the extension, realignment or removal of routes, to reflect current circumstances.

The Core Paths Plan has been prepared in partnership with Renfrewshire Local Access Forum and informed by a statutory 12 week period of consultation with local communities, landowners, key agencies such as NatureScot and Community Planning Partners.

Core Paths within each settlement across Renfrewshire are set out in the following pages and accompanying plans. Attribute tables within the plan provide details on the features of each path to help inform people whether the path is appropriate to their needs and abilities.

### **Core Paths:**

Indicated as dashed purple lines:



### **Aspirational Core Paths:**

Shown as red dashed lines:



## **Access points to the National Cycle Network:**

Identified as green triangles:



## **Access points to water:**

While no Core Paths are designated on water, important water access points are identified as blue dots:



# Langbank

(Core Path code LAN)

**The majority of Core Paths at Langbank are recreational and include connections to the surrounding countryside. Some routes utilise footways while others use off-road paths or minor country roads.**

Core Paths provide connections east to Bishopton, across the Inverclyde boundary at Finlaystone Country Estate to the west and towards Kilmacolm to the south-west.







# Langbank (Core Path code LAN)

Path	Name/location	Surface						Path width		Boundary Crossings					Bridges				Slope							Comments
		Paved	Bound	whin dust	gravel	grass	earth	1.5m ^	1.5m v	lock gate	unlock gate	kissing gate	stile	gap	1.5m ^	1.5m v	Steps	Seats	slight	medium	steep	On road	Adjacent to road	Away from road		
LAN 1	A8 to Finlaystone	●							●									●	●				●		Route crosses into Inverclyde	
LAN 2	Middlepenney Road / Marypark Road				●	●	●	●									●				●	●		●	Can be muddy	
LAN 3	Langbank Station / Dennistoun Road	●						●	●								●		●	●			●	●	Route to station	
LAN 4	Upper village to Old Greenock Road					●	●	●				●								●				●	Views of Clyde	
LAN 5	A8 to West Ferry Roundabout	●						●	●										●				●		Adjacent to A8	
LAN 7	Ferryhill Plantation (east)					●	●		●	●										●				●	Grazing animals	
LAN 8	Ferryhill Plantation (west)				●	●	●	●	●	●										●				●	Some dense undergrowth	
LAN 9	Knockmountain					●	●	●	●		●	●	●	●		●	●		●	●				●	Part boardwalk	
LAN 10	Middlepenney Road	●							●											●			●		Roadside footway	
LAN 11	Whitemoss Farm	●			●	●	●		●	●									●			●		●	Grazing animals	
LAN 12	Glen Moss				●	●	●	●							●		●			●				●	SSSI. Part boardwalk.	
LAN 13	Galahill Road	●							●												●	●			Minor road	
LAN 14	Netherton Road	●							●												●	●			Minor road	
LAN 15	Old Greenock Road / Barochan Road					●	●	●		●			●						●					●	Right of Way along field edge	
LAN 16	Formakin Estate				●	●	●	●	●		●	●					●	●	●	●				●	Waymarked route	
LAN 17	Greenock Road at Hatton Brae	●						●	●										●				●		Narrow footway	





# Bishopton

(Core Path code BIS)

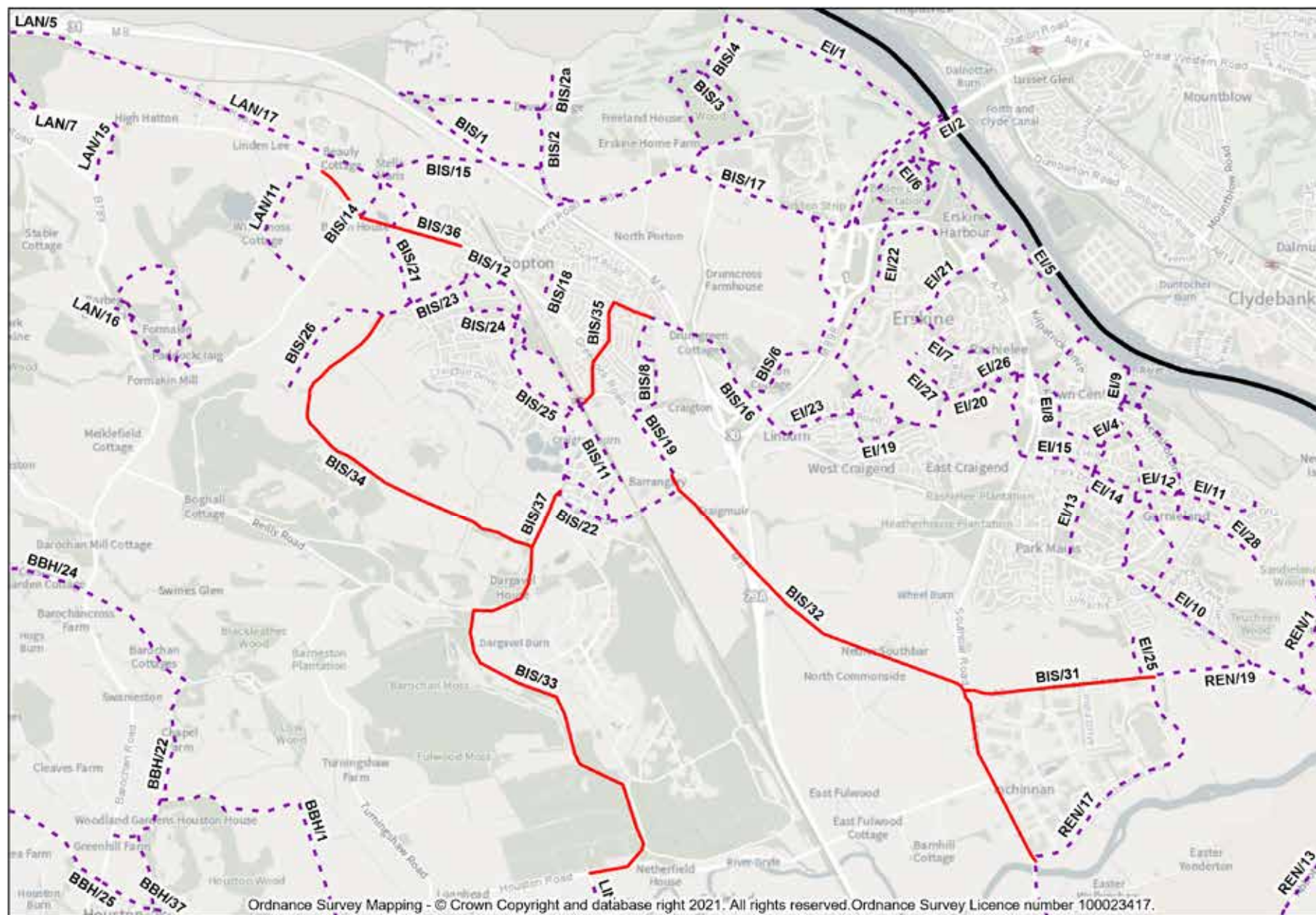
**The development of Dargavel Village at the site of the former Royal Ordnance Factory has transformed opportunities for recreational access and active travel in and around Bishopton.**

While delivery of Dargavel Village is within a long-term development horizon, much of the strategic infrastructure has already been constructed. The development has been designed to provide good quality walking and cycling links with Bishopton and the wider countryside.

Future opportunities have also been identified as a result of emerging proposals for a Dargavel Woodland Park. Aspirational Core Paths have been identified within the park which would provide new recreational and active travel routes. Further aspirational cycle routes are also identified towards Inchinnan Business Park.



# Bishopton (Core Path code BIS)



# Bishopton (Core Path code BIS)

BIS

Path	Name/location	Surface						Path width		Boundary Crossings					Bridges				Slope						Comments	
		Paved	Bound	whin dust	gravel	grass	earth	1.5m ^	1.5m v	lock gate	unlock gate	kissing gate	stile	gap	1.5m ^	1.5m v	Steps	Seats	slight	medium	steep	On road	Adjacent to road	Away from road		
BIS 1	Chestnut Ave (east) and adjoining tracks		●		●				●										●					●	Muddy in places	
BIS 2	Golf Road	●	●						●											●		●				Road to golf course
BIS 2a	Golf Road to Clyde Coast		●			●	●	●	●			●							●					●	Potential to be wet underfoot	
BIS 3	Big Wood				●		●	●	●									●	●					●	Woodland walk.	
BIS 4	Big Wood to Clyde Walkway			●	●			●												●				●	Adjacent to golf course	
BIS 6	Shilton Lane	●	●			●	●		●											●				●	Some sections wet under foot	
BIS 8	Craigton Burn / Dunglass Road	●				●	●	●	●					●	●				●				●	●	Including path through woods	
BIS 11	Strawberry Lane to Rossland Woods	●		●					●							●	●		●	●				●	Steps at station	
BIS 12	Rossland Woods / Newton Road	●			●	●			●									●	●				●	●	Section through playing field	
BIS 14	Millhill Road	●							●					●						●				●	Former road closed to cars	
BIS 15	Chestnut Avenue (west)	●	●		●				●										●			●		●	Chestnut Avenue circular route	
BIS 16	Link to Erskine via Old Greenock Road	●							●							●			●				●		Aspirational route in previous Plan	
BIS 17	Link to Erskine via Ferry Road	●						●	●										●				●		Aspirational route in previous Plan	
BIS 18	Bishopton Primary School	●							●										●					●	Access from roads to north and south	

continued on next page



# Bishopton (Core Path code BIS)

Path	Name/location	Surface						Path width		Boundary Crossings						Bridges				Slope							Comments
		Paved	Bound	whin dust	gravel	grass	earth	1.5m ^	1.5m v	lock gate	unlock gate	kissing gate	stile	gap	1.5m ^	1.5m v	Steps	Seats	slight	medium	steep	On road	Adjacent to road	Away from road			
BIS 19	Balmoral Drive to Barrangary Road	●						●	●										●				●		Narrow footway		
BIS 21	Slateford Road	●							●											●				●		Segregated roadside path	
BIS 22	Barrangary Road	●							●										●					●		Segregated roadside path	
BIS 23	Millbank	●							●			●							●						●	Path link behind houses	
BIS 24	Gatehead Crescent	●							●										●					●	●	Part roadside footway	
BIS 25	Birch Road	●							●										●				●			Pedestrian priority	
BIS 26	Glenshinnoch Viewpoint		●		●	●			●		●							●	●		●				●	Steep section. Seats at viewpoint	
BIS 31	Inchinnan Business Park - Greenock Rd																									Aspirational Core Path	
BIS 32	Greenock Road / Barnsford Road																									Aspirational Core Path	
BIS 33	Houston Road																									Aspirational Core Path	
BIS 34	Newton Road																									Aspirational Core Path	
BIS 35	Station Road / Old Greenock Road																									Aspirational Core Path	
BIS 36	Ingliston Equestrian Centre																									Aspirational Core Path	
BIS 37	Woodland Park (Barrangary Rd)																									Aspirational Core Path	



# Erskine and Inchinnan

(Core Path code EI)

**Core Paths in Erskine connect neighbourhoods and local services as well as providing access to recreation, including Boden Boo Woods and the Clyde Walkway.**

In recent years a number of paths have been constructed including a network around Craigend Hill linking to the Bridgewater shopping centre. Development of Park Mains High School has also enabled the creation of new paths, including connections between the Park Mains and Rashielee areas.







# Erskine and Inchinnan (Core Path code EI)

EI

Path	Name/location	Surface						Path width		Boundary Crossings						Bridges				Slope								Comments
		Paved	Bound	whin dust	gravel	grass	earth	1.5m ^	1.5m v	lock gate	unlock gate	kissing gate	stile	gap	1.5m ^	1.5m v	Steps	Seats	slight	medium	steep	On road	Adjacent to road	Away from road				
EI 1	Clyde Walkway (north-west)			•	•			•	•									•	•					•	Over wintering birds on shore			
EI 2	Erskine Bridge	•							•							•			•	•			•		Pedestrian and cycle lanes			
EI 4	Mains River / Mains Hill	•							•											•			•	•	Section features block paving			
EI 5	Clyde Walkway (south-east)	•	•	•				•	•						•	•		•	•					•	Link to Bridgewater Shopping Centre			
EI 6	Boden Boo	•		•					•					•				•		•				•	Woodland walk			
EI 7	North Barr / Rashielee	•	•					•	•							•		•	•	•			•	•	Road crossings			
EI 8	Rashielee / Park Mains	•							•							•	•			•			•	•	Ramped access bypasses steps			
EI 9	Newshot Island				•		•	•										•	•					•	Local Nature Reserve			
EI 10	Park Mains / Inchinnan	•						•	•							•	•		•	•			•	•	Ramped access bypasses steps			
EI 11	Newshot Drive / Flures Avenue	•							•										•					•	Continuation of EI 12			
EI 12	St Anne's Primary from east	•							•											•				•	Through residential area			
EI 13	Park Way / Mains Hill	•	•						•										•					•	Block paving			
EI 14	St Anne's Primary / Mains Hill	•							•											•				•	Block paving			
EI 15	Through Mains Hill and over A726	•	•						•							•			•					•	Block paving			

continued on next page

## Erskine and Inchinnan (Core Path code EI)

Path	Name/location	Surface						Path width		Boundary Crossings						Bridges				Slope					Comments
		Paved	Bound	whin dust	gravel	grass	earth	1.5m ^	1.5m v	lock gate	unlock gate	kissing gate	stile	gap	1.5m ^	1.5m v	Steps	Seats	slight	medium	steep	On road	Adjacent to road	Away from road	
EI 19	Linburn, Millfield and Bargarran	•							•											•				•	Circular route south of Craigend Hill'
EI 20	Rashielee / Millfield Hill	•							•										•		•		•	•	Access to Park Mains High School
EI 21	Barhill Road / Clyde Walkway	•							•									•	•				•		Access to Clyde Walkway
EI 22	North / West of Bargarran	•						•	•					•					•	•				•	Some steep sections
EI 23	Linburn Road	•							•											•				•	Segregated path
EI 25	Greenock Road / Freeland Drive	•						•						•			•			•				•	Narrow path between fields
EI 26	Park Mains High School (East)	•							•									•	•					•	New path link to school
EI 27	Craigend Hill	•							•											•				•	Route linking to local schools
EI 28	Newshot Drive / Florish Road	•							•										•				•		Roadside Footways



# Renfrew

(Core Path code REN)

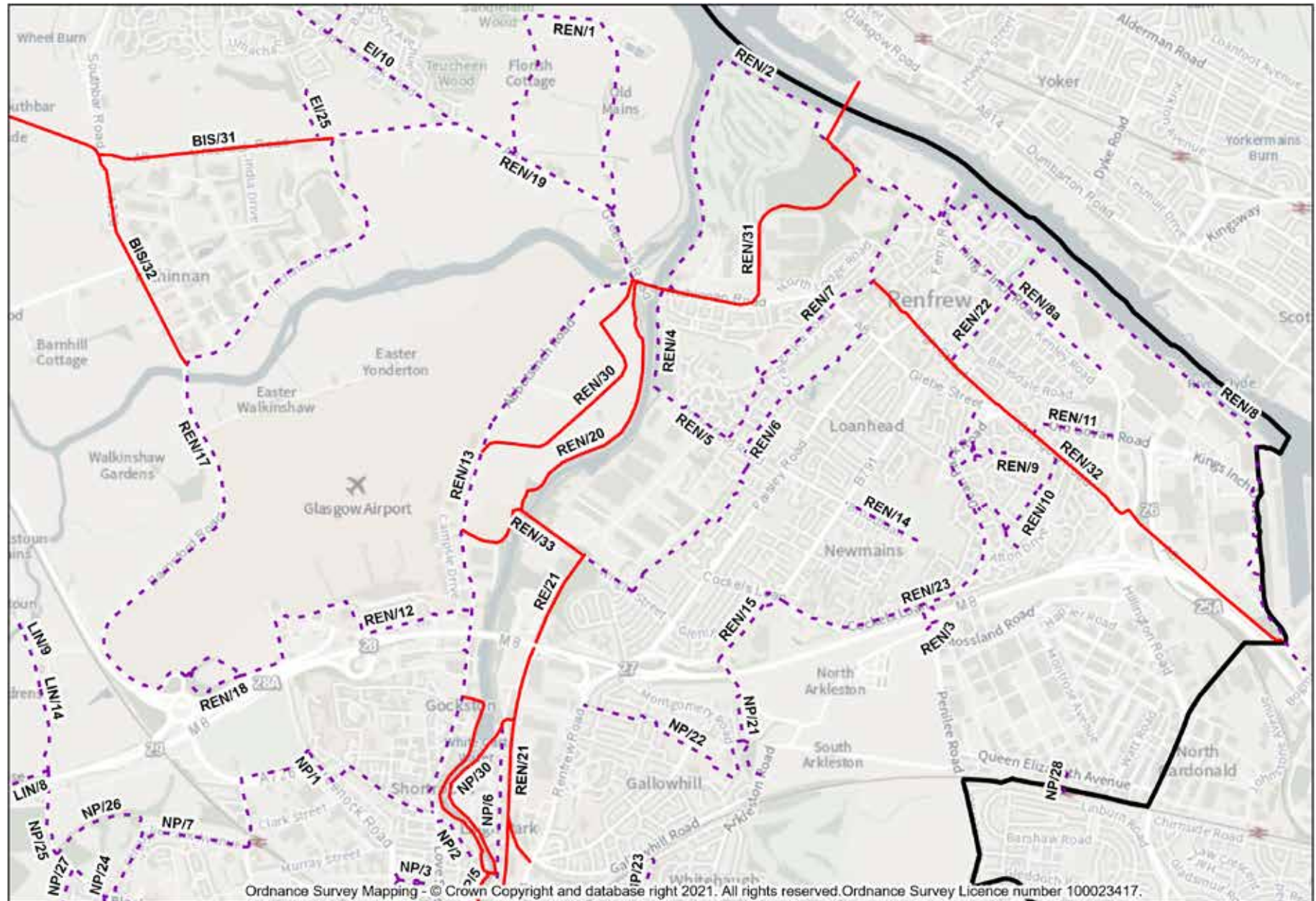
**Core Paths in Renfrew provide links to key destinations including Glasgow Airport, Inchinnan Business Park, Braehead and Hillington Industrial estate.**

Some routes make use of existing roadside footways which have been designated for shared use, while others are located away from traffic.

Access is also provided to the Clyde coast and the River Cart along recreational routes at the White Cart Walkway and adjacent to Renfrew Golf Course.

New pedestrian and cycling routes as part of City Region City Deal proposals within Renfrew provide significant new opportunities for both active travel and recreation.





## Renfrew (Core Path code REN)

REN

Path	Name/location	Surface						Path width		Boundary Crossings						Bridges				Slope						Comments
		Paved	Bound	whin dust	gravel	grass	earth	1.5m ^	1.5m v	lock gate	unlock gate	kissing gate	stile	gap	1.5m ^	1.5m v	Steps	Seats	slight	medium	steep	On road	Adjacent to road	Away from road		
REN 1	Sandieland Wood	●	●			●	●	●	●		●			●					●			●		●	Farm lanes and field margin	
REN 2	Renfrew Walkway / Meadowside	●						●	●					●				●	●				●	●	Historic Argyll Stones	
REN 3	Footbridge over M8 to Hillington		●						●							●	●		●					●	Includes ramped access	
REN 4	White Cart Walkway	●					●	●						●					●					●	Includes access to Kirklandneuk Park	
REN 5	Porterfield Road	●					●	●	●										●				●	●	North of Westway Business Park	
REN 6	Inchinnan Road / Wright Street	●							●		●							●	●				●	●	Robertson Park and Knockhill Park	
REN 7	Meadowside Street / Porterfield Road	●							●										●				●	●	links to Kirklandneuk Primary School	
REN 8	Clyde Walkway & Clyde View Park	●							●		●					●	●	●	●				●	●	Waterfront and Braehead	
REN 8a	King's Inch Road	●							●										●				●	●	Shared use paths both sides of road	
REN 9	Dean Park (north)	●							●										●					●	Paths connecting neighbourhoods	
REN 10	Dean Park (south)	●							●										●				●	●	Paths connecting neighbourhoods	
REN 11	Old Govan Road	●						●											●				●		Footway to Braehead	
REN 12	Cycle route at Glasgow Airport	●	●						●									●	●				●		Signposted cycle route	
REN 13	Renfrew/Paisley Cycle link to Airport	●						●	●										●			●	●		Signposted cycle route	

continued on next page

# Renfrew (Core Path code REN)

Path	Name/location	Surface						Path width		Boundary Crossings					Bridges				Slope							Comments
		Paved	Bound	whin dust	gravel	grass	earth	1.5m ^	1.5m v	lock gate	unlock gate	kissing gate	stile	gap	1.5m ^	1.5m v			Steps	Seats	slight					
REN 14	Broadloan	●							●										●				●			Adjacent to playing fields
REN 15	Cockleshill Park	●						●										●				●	●			Route through park
REN 17	Barnsford Road / Inchinnan Drive	●	●					●	●									●				●				Signposted cycle route
REN 18	Paisley Moss				●		●	●						●				●					●			Part wooden boardwalk
REN 19	Inchinnan Road to Bascule Bridge	●						●	●						●		●	●				●				Cycle route proposed
REN 22	Andrew Avenue	●							●									●				●				Footway link to Braehead
REN 23	Cockels Loan / Dean Park Road	●							●									●				●				Segregated roadside paths
REN 20	White Cart Water Riverside Route																									Aspirational Core Path
REN 21	Renfrew/Paisley Cycle Link																									Aspirational Core Path
REN 30	Glasgow Airport Investment Area																									Aspirational Core Path
REN 31	Renfrew-Yoker Bridge Link																									Aspirational Core Path
REN 32	Renfrew/Glasgow Cycle Link																									Aspirational Core Path
REN 33	Abbotsinch Road/ Wright Street																									Aspirational Core Path





# Bridge of Weir, Brookfield and Houston

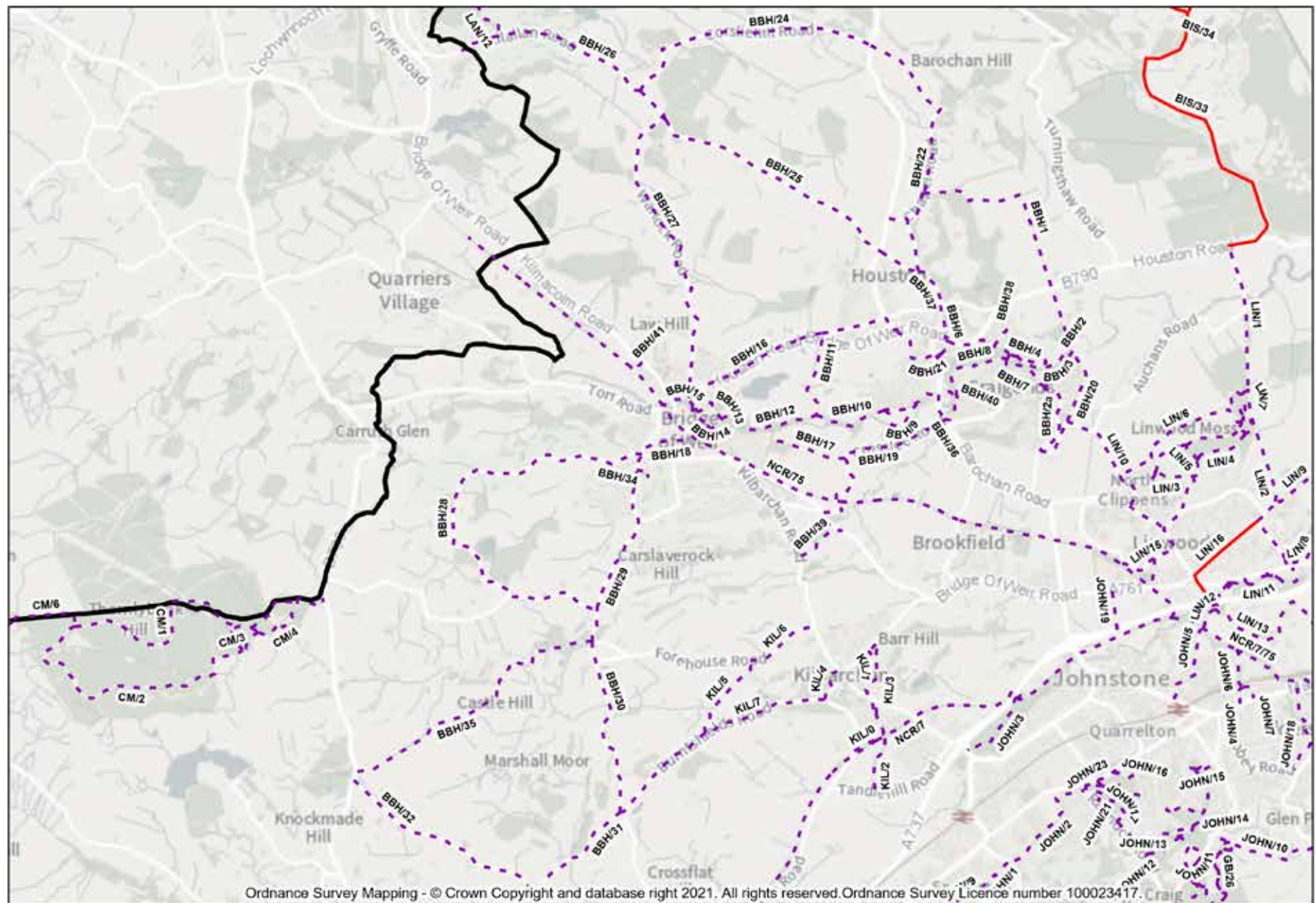
(Core Path code BBH)

The area around Bridge of Weir, Brookfield and Houston supports a variety of off-road recreational routes and rural roads which are also designated as Core Paths.





## Bridge of Weir, Brookfield and Houston (Core Path code BBH)



# Bridge of Weir, Brookfield and Houston (Core Path code BBH)

BBH

Path	Name/location	Surface						Path width		Boundary Crossings						Bridges				Slope							Comments
		Paved	Bound	whin dust	gravel	grass	earth	1.5m ^	1.5m v	lock gate	unlock gate	kissing gate	stile	gap	1.5m ^	1.5m v	Steps	Seats	slight	medium	steep	On road	Adjacent to road	Away from road			
BBH 1	Craigends Rd north / track to Chapel Rd	●			●				●										●			●		●	Minor road and farm track		
BBH 2	Gryffebank Avenue	●				●	●	●	●										●				●	●	Path behind houses & footway		
BBH 2a	Fulton Drive	●							●										●				●		Footway linking other core routes		
BBH 3	North of river at Ardgyffe					●	●	●											●					●	By riverside. Path not always clear		
BBH 4	Riverside	●							●										●				●	●	Playing fields at Ardgyffe Park		
BBH 5	Crosslee Shops / Ardgyffe	●							●										●				●	●	Path connecting neighbourhoods		
BBH 6	Neuk Crescent / Kirk Road	●							●											●				●	Path connects BBH 5 and BBH 37		
BBH 7	Fulton Drive / Ardgyffe	●	●		●			●	●							●			●					●	Access to Craigends Yew		
BBH 8	Barrochan Road / Ardgyffe		●		●	●	●	●												●				●	Woodland walk linking housing		
BBH 9	By River Gryffe at Crosslee					●	●	●											●					●	May be muddy underfoot		
BBH 10	Lade walk (east)	●				●	●	●						●					●					●	Historic lade above river		
BBH 11	Lade Walk from Houston Road	●			●	●	●	●	●					●	●				●			●		●	Farm lane and narrow path		
BBH 12	Mill Brae & Lade Walk (west)	●		●	●		●	●	●						●	●	●	●	●		●	●		●	Steep sections, uneven surface		
BBH 13	Loch Road/Place & path to Gryffe	●					●	●	●					●			●		●	●			●	●	Path connects to BBH 12		

continued on next page

# Bridge of Weir, Brookfield and Houston (Core Path code BBH)

Path	Name/location	Surface						Path width		Boundary Crossings					Bridges				Slope						Comments
		Paved	Bound	whin dust	gravel	grass	earth	1.5m ^	1.5m v	lock gate	unlock gate	kissing gate	stile	gap	1.5m ^	1.5m v			Steps	Seats	slight				
BBH 14	Gryffe Walkway (west section)			●	●		●	●						●		●	●		●					●	Viewing platform at falls
BBH 15	Mill O’Gryffe Road to viaduct	●			●			●											●			●	●	Includes Right of Way to river	
BBH 16	Gryffe High School	●					●	●									●	●				●		Steps at underpass	
BBH 17	Moss Road / Crosslee Road	●			●	●	●	●			●	●						●			●		●	Includes access through field	
BBH 18	Pow Burn Path	●			●		●	●						●		●	●			●			●	Access to waterfall	
BBH 19	Barrochan Road to NCR/75	●						●											●		●			Minor road	
BBH 20	Craigends Road	●						●							●			●			●			Minor road	
BBH 21	Route by Houston Primary School	●						●								●		●			●		●	Underpasses at both ends	
BBH 22	Corseliehill Rd (east) / Chapel Rd	●	●					●							●			●			●			Minor road and track	
BBH 24	Corseliehill Rd (west)	●						●										●			●			Minor road	
BBH 25	Kilmacolm Rd / Kilallan Rd (east)	●						●										●			●			Minor road	
BBH 26	Kilallan Rd (west)	●						●							●			●			●			Minor road	
BBH 27	Warlock Road	●						●							●			●			●			Minor road	
BBH 28	Barnbeth / High Auchensale	●						●										●			●			Minor road	

continued on next page



# Bridge of Weir, Brookfield and Houston (Core Path code BBH)

BBH

Path	Name/location	Surface						Path width		Boundary Crossings						Bridges				Slope							Comments
		Paved	Bound	whin dust	gravel	grass	earth	1.5m ^	1.5m v	lock gate	unlock gate	kissing gate	stile	gap	1.5m ^	1.5m v	Steps	Seats	slight	medium	steep	On road	Adjacent to road	Away from road			
BBH 29	Lawmanrock Road (north)	●							●							●		●		●		●	●			Minor road	
BBH 30	Lawmarnock Road (south)	●							●											●		●				Minor road	
BBH 31	Burntshields Road at Clochoderick	●							●							●				●		●				Minor road	
BBH 32	Barnaigh Rd west of Burntshields Rd	●							●							●				●		●				Minor road	
BBH 34	Ranfurly Castle					●	●		●							●				●				●		Scheduled Monument	
BBH 35	Lawmarnock / Stepends Road	●			●	●	●		●	●	●			●						●		●		●		Farmland. Grazing animals	
BBH 36	Houston Road at Crosslee Bridge	●						●								●			●				●			Narrow footway	
BBH 37	Kirk Road	●						●								●			●				●			Footway	
BBH 38	Path north of River Gryffe to Crossways	●							●										●					●		Route between neighbourhoods	
BBH 39	Locher Water path & road link to NCN	●			●		●	●	●			●		●				●		●		●	●	●		Path next to falls and minor road	
BBH 40	Crosslee Park / Ninian Avenue	●							●							●			●					●		Bridge over River Gryffe	
BBH 41	NCN connection from Kilmacolm Rd				●		●	●						●					●	●				●		Connection to cycle route	

# Linwood

(Core Path code LIN)

**Core Paths in the Linwood area connect the town to Paisley, Johnstone, Houston and Bridge of Weir. These offer a mixture of recreational and active travel opportunities and include the historic Linwood Lades to the south and Linwood Community Woodland to the north.**

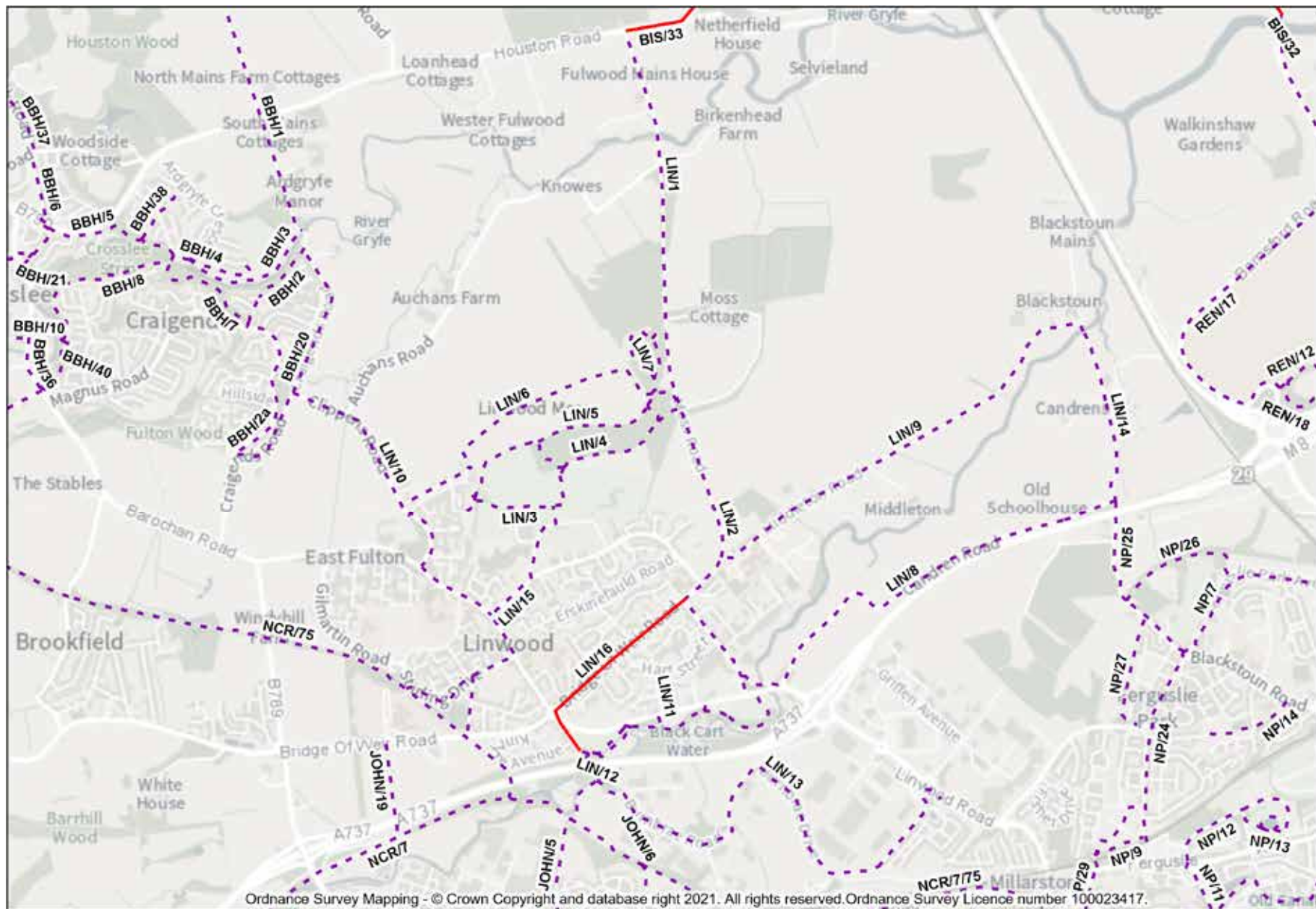
The National Cycle Network is accessed to the south of the town. Moss Road to the north offers an opportunity to connect with Bishopton via the emerging Dargavel Woodland Park.





## Linwood (Core Path code LIN)

LIN







## Linwood (Core Path code LIN)

Path	Name/location	Surface						Path width		Boundary Crossings					Bridges				Slope							Comments
		Paved	Bound	whin dust	gravel	grass	earth	1.5m ^	1.5m v	lock gate	unlock gate	kissing gate	stile	gap	1.5m ^	1.5m v	Steps	Seats	slight	medium	steep	On road	Adjacent to road	Away from road		
LIN 1	Moss Road (north)	●							●					●					●			●		●	Mostly on former road closed to cars	
LIN 2	Moss Road (south) / Bridge Street	●							●										●			●	●		Access to Clippens School	
LIN 3	Linwood Playing Fields	●							●										●					●	ON-X Community and Sports Centre	
LIN 4	Community Woodland (south)			●					●					●				●	●					●	Pleasant woodland walks	
LIN 5	Community Woodland (west)			●					●									●	●					●	Pleasant woodland walks	
LIN 6	Linwood Moss	●			●	●	●	●	●		●								●			●		●	Grazing animals	
LIN 7	Community woodland (north)			●				●	●					●		●		●	●					●	Connects to LIN 6 at Linwood Moss	
LIN 8	Candren Road Cycle Route	●						●	●										●			●	●		Signposted cycle route	
LIN 9	Middleton Road / Blackstoun	●			●		●		●	●				●					●			●		●	Gaps next to locked gates.	
LIN 10	Clippens Road / Craig Road	●							●										●			●	●		Section on minor single-track road	
LIN 11	Linwood Lade	●		●				●							●		●		●					●	Linwood Lade riverside paths	
LIN 12	Linwood Lade to NCR	●							●							●			●					●	Link to NCR and Johnstone	
LIN 13	Linwood Lade / Phoenix Retail Park	●							●							●			●				●	●	Through industrial area	
LIN 14	Blackstoun	●							●							●			●			●			Minor road	
LIN 15	ON-X Sports Centre to NCN	●							●										●			●	●		Short connection mostly on-road	
LIN 16	Bridge of Weir Road																								Aspirational Core Path	



# Kilbarchan

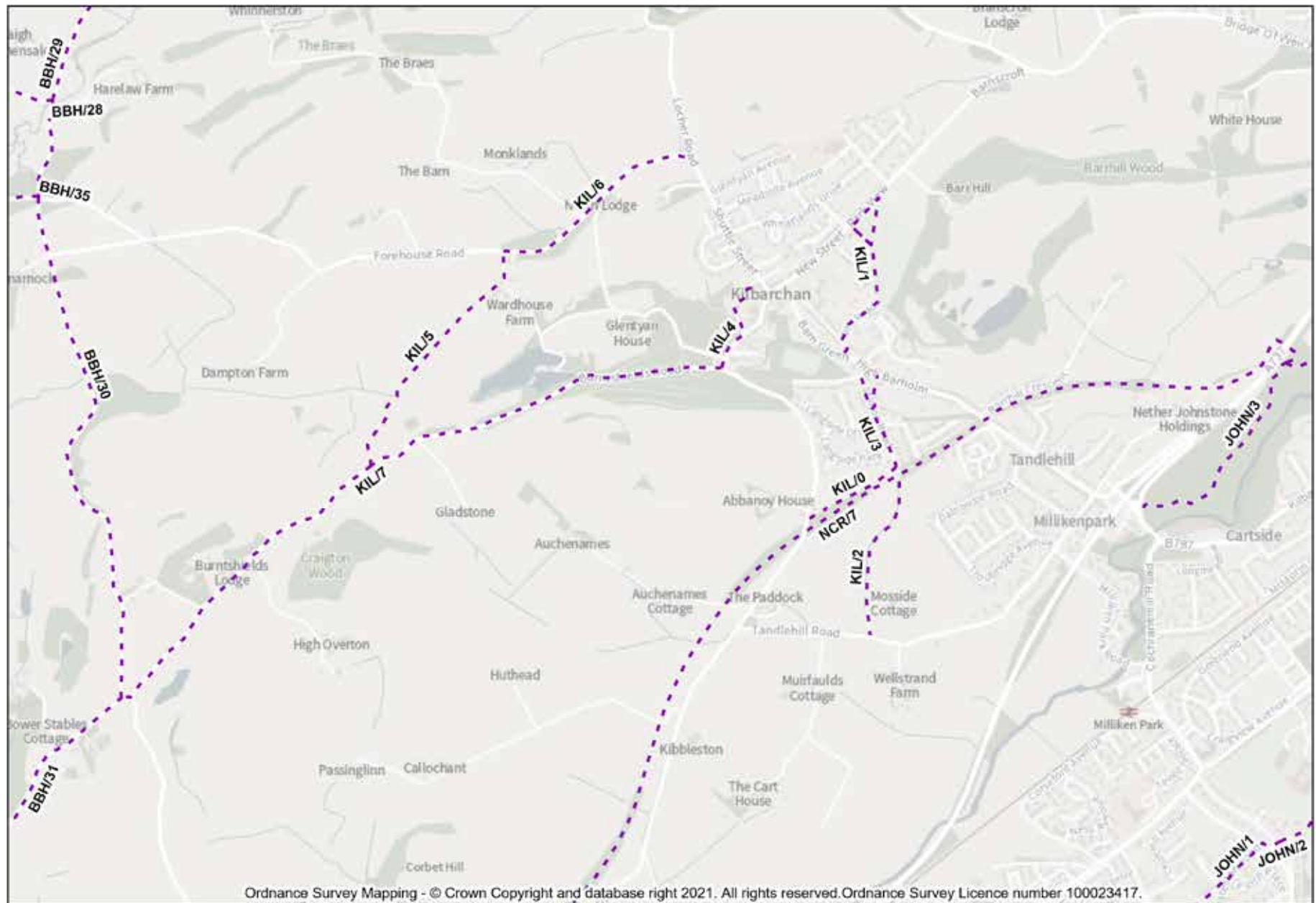
(Core Path code KIL)

**Kilbarchan is served by mostly off-road recreational routes within the village and into the wider countryside to the west and south.**

National Cycle Route NCR/7 passes through the village, providing an important active travel route which is also popular for recreation.



## Kilbarchan (Core Path code KIL)





# Kilbarchan (Core Path code KIL)

KIL

Path	Name/location	Surface						Path width		Boundary Crossings						Bridges				Slope					Comments
		Paved	Bound	whin dust	gravel	grass	earth	1.5m ^	1.5m v	lock gate	unlock gate	kissing gate	stile	gap	1.5m ^	1.5m v	Steps	Seats	slight	medium	steep	On road	Adjacent to road	Away from road	
KIL 0	Station Road / Kibbleston Road					•		•						•					•					•	Narrow grass path
KIL 1	Kilbarchan Public Park / Well Road	•						•	•										•	•		•		•	Quiet road and path through park
KIL 2	Station Road / Tandlehill Road				•	•	•	•	•		•			•					•	•				•	Narrow track next to fields
KIL 3	Station Road / High Barholm	•						•							•		•		•				•		Footway avoids steps & bridge
KIL 4	Weavers Court / Merchants Close	•			•				•										•			•		•	Connecting lanes between houses
KIL 5	Dampton Pad				•	•	•			•		•		•					•				•	•	Steep section. Grazing animals
KIL 6	Forehouse Road / Wardhouse Farm	•							•											•		•			Minor road
KIL 7	Burntshields Road	•							•											•		•			Minor road

# Howwood

(Core Path code HOW)

**Core Paths extend to the north-east and south-west of Howwood. These include quiet minor roads, forest and farm tracks and some short Rights of Way within the village itself.**

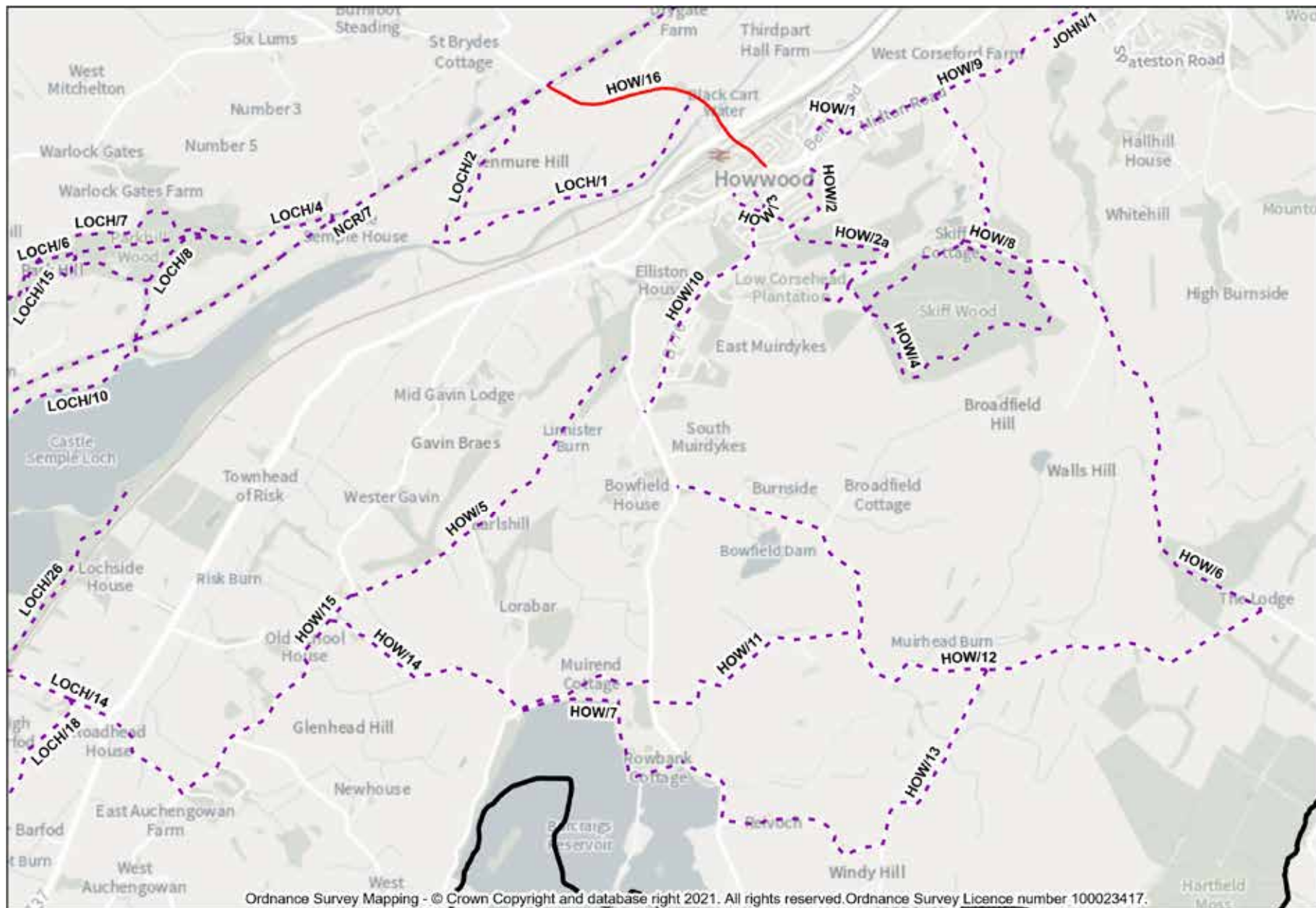
The Semple Trail extends south-west from the village into Lochwinnoch, creating a 13 km circular route.





## Howwood (Core Path code HOW)

HOW







## Howwood (Core Path code HOW)

Path	Name/location	Surface						Path width		Boundary Crossings					Bridges				Slope							Comments
		Paved	Bound	whin dust	gravel	grass	earth	^ 1.5m	v 1.5m	lock gate	unlock gate	kissing gate	stile	gap	^ 1.5m	v 1.5m	Steps	Seats	slight	medium	steep	On road	Adjacent to road	Away from road		
HOW 1	Beith Road / Midton Road					●		●									●	●		●				●	Over playing field	
HOW 2	Howwood Primary School	●							●								●		●					●	Routes to school	
HOW 2a	Low Corsehead Plantation			●				●	●		●					●		●		●	●			●	Forestry & Land Scotland paths	
HOW 3	Bowfield Rd from Main St & George St	●			●			●									●				●	●		●	Two steep links to upper village	
HOW 4	Skiff Wood					●	●		●		●			●						●	●			●	Forestry track. Rutted sections	
HOW 5	Elliston Castle Rd / Newton of Belltrees	●			●	●	●	●	●		●				●					●				●	Livestock.	
HOW 6	Whittliemuir Walk				●	●	●		●		●		●			●				●				●	Burn crossing to negotiate	
HOW 7	Barcraigs Reservoir					●			●		●				●				●					●	Path next to reservoir	
HOW 8	Midton Road / Whittliemuir	●							●	●				●						●		●		●	Equine access via HOW 8	
HOW 9	Midton Road / Old Howwood Road	●						●	●										●			●	●		Minor road	
HOW 10	Bowfield Road	●						●												●		●	●		Narrow pavement	
HOW 11	North-east from Barcraigs Reservoir	●							●										●			●			Minor road	

continued on next page

## Howwood (Core Path code HOW)

HOW

Path	Name/location	Surface						Path width		Boundary Crossings					Bridges				Slope						Comments
		Paved	Bound	whin dust	gravel	grass	earth	^ 1.5m	v 1.5m	lock gate	unlock gate	kissing gate	stile	gap	^ 1.5m	v 1.5m	Steps	Seats	slight	medium	steep	On road	Adjacent to road	Away from road	
HOW 12	Bowfield Bridge to Mid Hartfield	●							●							●			●			●			Minor road
HOW 13	East from Barcraigs Reservoir	●							●										●			●			Minor road
HOW 14	North-west from Barcraigs Reservoir	●							●											●		●			Minor road
HOW 15	Newton of Belltrees / Roadhead	●							●							●				●		●			Minor road
HOW 16	Station Rd link to NCN																								Aspirational Core Path

# Lochwinnoch

(Core Path code LOCH)

**Lochwinnoch is served by a variety of recreational routes, including paths within Castle Semple Country Park.**

Core Paths provide access to historic features including the 16th century Collegiate Church and 18th century cascade complex. Recreational routes also include a nature trail at the RSPB Nature Reserve.

Several Core Paths contribute to the circular 13 km Semple Trail which also connects with Howwood. Access is also provided at the Castle Semple Visitor Centre to Castle Semple Loch and a variety of watersport activities.

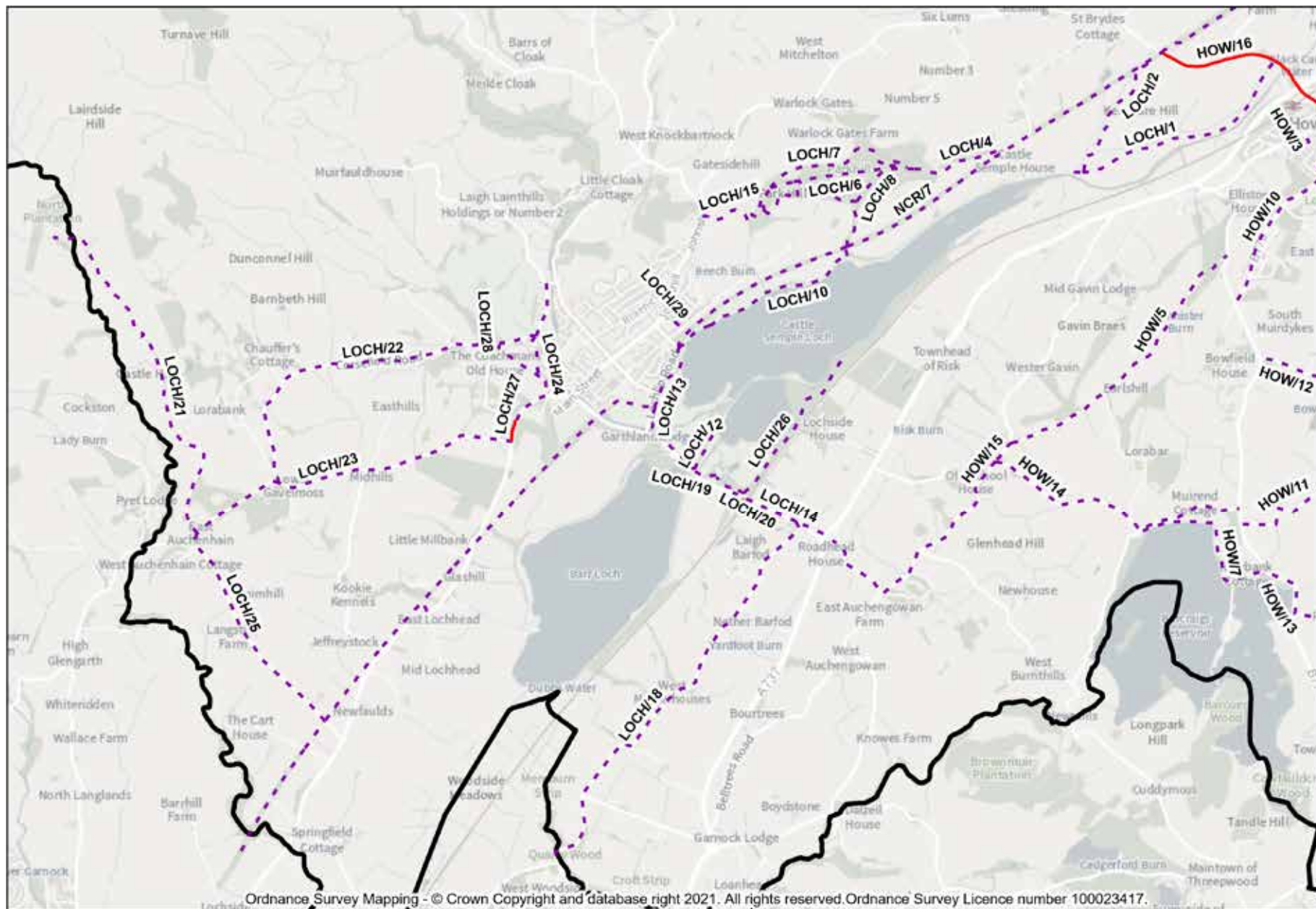
National Cycle Route NCR/7 provides an active travel route towards Kilbarchan and Johnstone to the north-east as well as settlements within North Ayrshire to the south-west.





## Lochwinnoch (Core Path code LOCH)

LOCH





## Lochwinnoch (Core Path code LOCH)

Path	Name/location	Surface						Path width		Boundary Crossings					Bridges				Slope							Comments
		Paved	Bound	whin dust	gravel	grass	earth	1.5m ^	1.5m v	lock gate	unlock gate	kissing gate	stile	gap	1.5m ^	1.5m v	Steps	Seats	slight	medium	steep	On road	Adjacent to road	Away from road		
LOCH 1	East Approach to Fancy Bridge	●				●			●										●					●	Kenmure Hill Temple to north	
LOCH 2	Fancy Bridge to NCR					●		●				●							●					●	Kenmure Hill Temple to east	
LOCH 4	East route from Courtshaw Wood			●	●				●		●	●								●				●	Can be muddy	
LOCH 6	Central route at Parkhill Wood		●	●			●	●	●						●					●				●	Can be muddy	
LOCH 7	Parkhill Wood Hill Trail			●	●	●	●	●	●						●	●	●	●		●	●			●	Routes in Parkhill Woods	
LOCH 8	South route from Courtshaw Wood	●		●			●	●				●						●			●			●	Routes in Parkhill Woods	
LOCH 10	Castle Semple lochside path		●	●	●			●	●							●		●	●					●	Beside loch	
LOCH 12	Dubbs Water at Aird Meadow		●	●				●										●	●					●	RSPB Centre	
LOCH 13	Castle Semple Centre from A760	●							●							●		●	●					●	Lochside path	
LOCH 14	Station to Roadhead junction	●						●												●			●		Roadside footway narrow in places	
LOCH 15	Johnshill to Parkhill Wood			●			●	●							●			●		●	●			●	Car park	
LOCH 18	Netherhouses Road	●							●											●		●				Minor road
LOCH 19	West approach to Aird Meadow	●		●				●	●										●					●	RSPB Centre	

continued on next page

## Lochwinnoch (Core Path code LOCH)

LOCH

Path	Name/location	Surface						Path width		Boundary Crossings					Bridges				Slope						Comments
		Paved	Bound	whin dust	gravel	grass	earth	^ 1.5m	v 1.5m	lock gate	unlock gate	kissing gate	stile	gap	^ 1.5m	v 1.5m	Steps	Seats	slight	medium	steep	On road	Adjacent to road	Away from road	
LOCH 20	East approach to Aird Meadow			●				●											●					●	RSPB Centre
LOCH 21	Route past Maich Fishery			●	●	●	●		●		●		●	●	●	●			●	●	●			●	Rough track with fords
LOCH 22	Corsefield Road	●							●												●	●			Minor road
LOCH 23	Auchenhean Road	●							●												●	●			Minor road
LOCH 24	Burnfoot Road	●						●											●			●			Minor road
LOCH 25	Langstilly Road	●						●	●													●			Minor road
LOCH 26	Path to Tod’s Seat			●				●											●		●			●	RSPB Centre. Bird hides
LOCH 27	Auchenhean Road	●					●	●												●		●	●		Aspirational section
LOCH 28	South of Garpel Bridge					●			●				●						●					●	Right of Way over field
LOCH 29	Skipper’s Path	●							●											●				●	Right of Way



# Clyde Muirshiel Regional Park area

(Core Path code CM)

**Two of the Regional Park centres, Castle Semple and Muirshiel, are located within Renfrewshire. Due to its proximity to Lochwinnoch all Core Paths within Castle Semple are denoted under the prefix LOCH. The Muirshiel Centre is located more remotely to the north-west of Lochwinnoch.**

Eight Core Paths are designated with the CM prefix. These provide a range of recreational routes within Muirshiel Country Park and the surrounding countryside to the east, north and west.

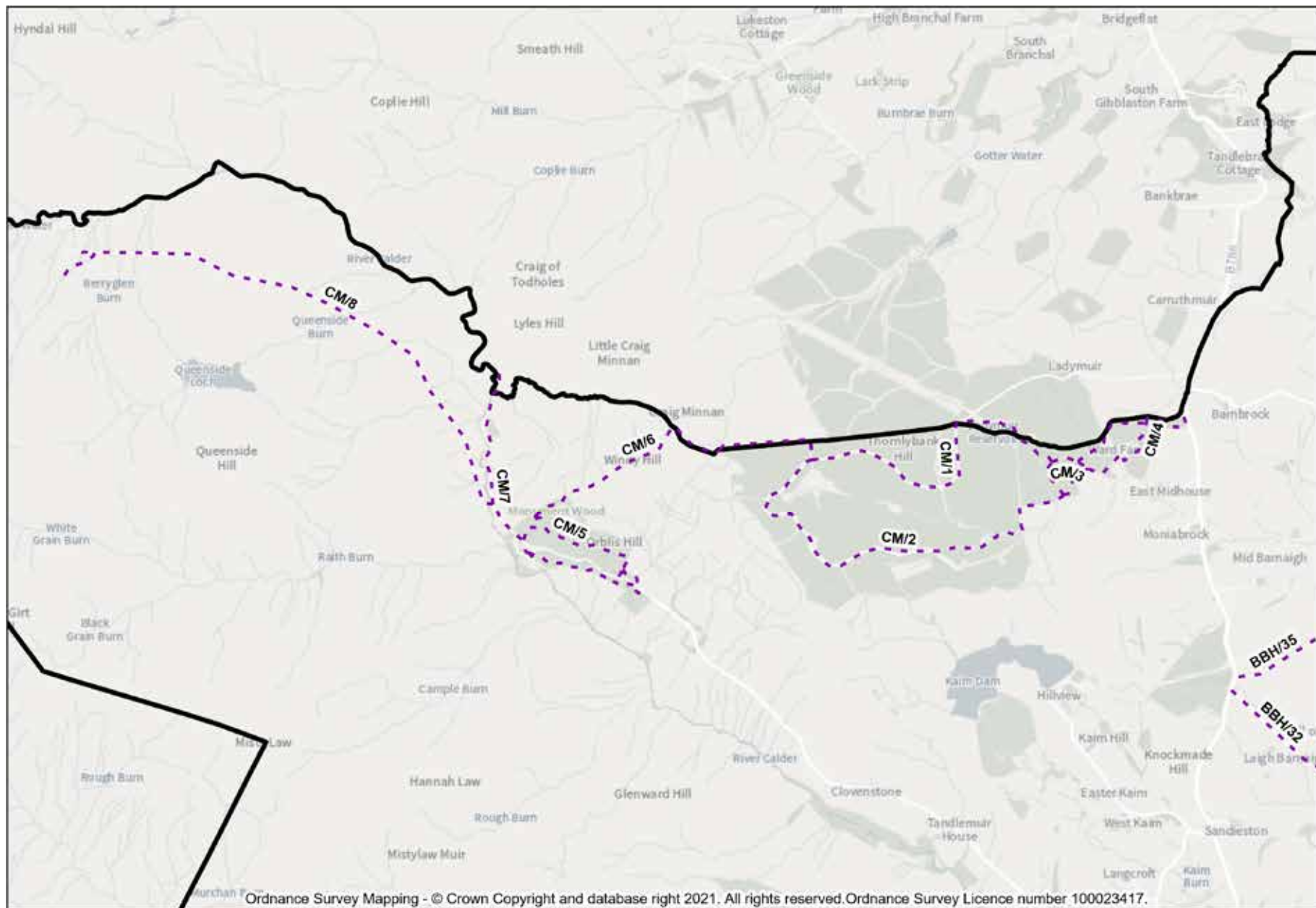
There are a number of inter-connecting routes linking Locherwood Community Woodland and Thornlybank Plantation to the east and Windy Hill to the north.

Further connecting routes provide access more deeply into the Renfrewshire Heights and towards the Inverclyde boundary, including a historic track to the former Muirshiel Barytes Mine.



## Clyde Muirshiel Regional Park area (Core Path code CM)

CM





## Clyde Muirshiel Regional Park area (Core Path code CM)

Path	Name/location	Surface						Path width		Boundary Crossings						Bridges				Slope					Comments
		Paved	Bound	whin dust	gravel	grass	earth	1.5m ^	1.5m v	lock gate	unlock gate	kissing gate	stile	gap	1.5m ^	1.5m v	Steps	Seats	slight	medium	steep	On road	Adjacent to road	Away from road	
CM 1	Thornlybank Plantation (north)				•	•		•	•					•	•		•		•					•	Stile bypassed
CM 2	Thornlybank Plantation (south)				•	•		•								•			•					•	Short section less well defined
CM 3	Locher Community Woodland (west)					•			•						•			•						•	Muddy in places
CM 4	Locher Community Woodland (east)			•		•			•					•	•	•	•	•						•	Wet underfoot in places
CM 5	Muirshiel Country Park					•		•										•	•					•	Nature trails at Muirshiel
CM 6	Windy Hill			•	•	•		•	•			•		•	•		•				•			•	Boggy in places
CM 7	Hardridge				•				•										•					•	Rough track into Inverclyde
CM 8	Clyde Muirshiel Mine Track				•				•							•			•		•			•	Rough track to historic mine.





# Gleniffer Braes Country Park

(Core Path code GB)

A range of Core Paths provide access to Gleniffer and Brownside Braes along the south-eastern edge of Renfrewshire. Routes extend across the Braes, with the westernmost Core Path connecting into woodland to the south of Johnstone.





# Gleniffer Braes Country Park (Core Path code GB)

GB

Path	Name/location	Surface						Path width		Boundary Crossings						Bridges				Slope						Comments
		Paved	Bound	whin dust	gravel	grass	earth	^ 1.5m	v 1.5m	lock gate	unlock gate	kissing gate	stile	gap	^ 1.5m	v 1.5m	Steps	Seats	slight	medium	steep	On road	Adjacent to road	Away from road		
GB 2	South and West of Dykebar Hospital	●			●	●	●	●	●					●					●					●	Rough surface. Muddy sections	
GB 3	Hollybush, Dykebar from Strathcarron	●	●			●	●	●						●					●				●	●	Field, woods and footway	
GB 5	Hollybush, Dykebar from Caplethill Rd					●	●		●	●			●	●		●			●					●	Grazing animals	
GB 6	Stoney Brae	●			●	●	●	●	●					●					●	●				●	Farm track can be muddy	
GB 7	Brownside Braes Farm drive	●			●				●		●									●				●	Uneven farm track	
GB 8	Hill Road at Brownside Braes				●	●	●	●	●		●	●								●				●	Livestock. Muddy	
GB 9	Gleniffer Braes from Caplethill Rd	●				●	●	●				●					●			●	●			●	Can be muddy	
GB 10	Path through Brownside Braes				●	●	●	●			●	●			●				●	●				●	Livestock. Muddy	
GB 11	Brownside Braes to Fereneze Braes				●	●	●	●	●		●	●						●		●	●			●	Livestock. Boggy in places	
GB 12	Procession Road / Concert Glen	●			●		●	●	●						●		●	●	●	●	●			●	Tannahill's Well and waterfall	
GB 13	Glen Park	●			●		●	●	●		●				●		●		●	●	●			●	Route past two dams	
GB 14	Tannahill Walkway	●					●	●	●		●	●						●		●	●			●	Livestock	
GB 15	Horse trail at Gleniffer Braes					●	●	●	●		●	●							●	●				●	Livestock	

continued on next page



# Gleniffer Braes Country Park (Core Path code GB)

Path	Name/location	Surface						Path width		Boundary Crossings					Bridges				Slope								Comments
		Paved	Bound	whin dust	gravel	grass	earth	1.5m ^	1.5m v	lock gate	unlock gate	kissing gate	stile	gap	1.5m ^	1.5m v	Steps	Seats	slight	medium	steep	On road	Adjacent to road	Away from road			
GB 16	Toward Fereneze Hills via reservoir				●	●	●	●	●		●	●								●	●	●		●	Livestock. Wet underfoot.		
GB 17	Sergeant Law / Robertson Car Parks		●			●	●	●	●		●	●						●	●	●				●	Model aircraft site. Livestock		
GB 18	Robertson Park	●		●	●	●	●	●	●		●	●			●			●	●	●				●	Livestock, uneven in parts		
GB 20	Country Park access east of Foxbar Cres.					●	●	●	●											●	●			●	Muddy, some steep sections		
GB 21	Country Park access west of Foxbar Cres.					●	●	●	●								●	●			●			●	Muddy, very steep sections		
GB 22	MacDonald's Walks					●	●	●									●			●	●			●	Muddy. Bracken growth		
GB 23	Brandy Burn Way (east)				●	●	●	●				●						●	●	●				●	May encounter livestock		
GB 24	South link to MacDonald's Walks				●	●	●	●	●										●	●				●	Uneven in places		
GB 25	Brandy Burn Way at Bardrain Glen			●	●			●						●	●			●			●			●	Very steep section		
GB 26	Brandy Burn Way (north) / Windyhill			●				●	●			●			●		●	●	●	●				●	Livestock		
GB 28	Country Park access from Hollows Ave	●			●	●	●	●	●								●		●	●		●		●	Can be muddy		
GB 4	West of Dykebar to Stoney Brae																								Aspirational Core Path		



# Johnstone and Elderslie

(Core Path code JOHN)

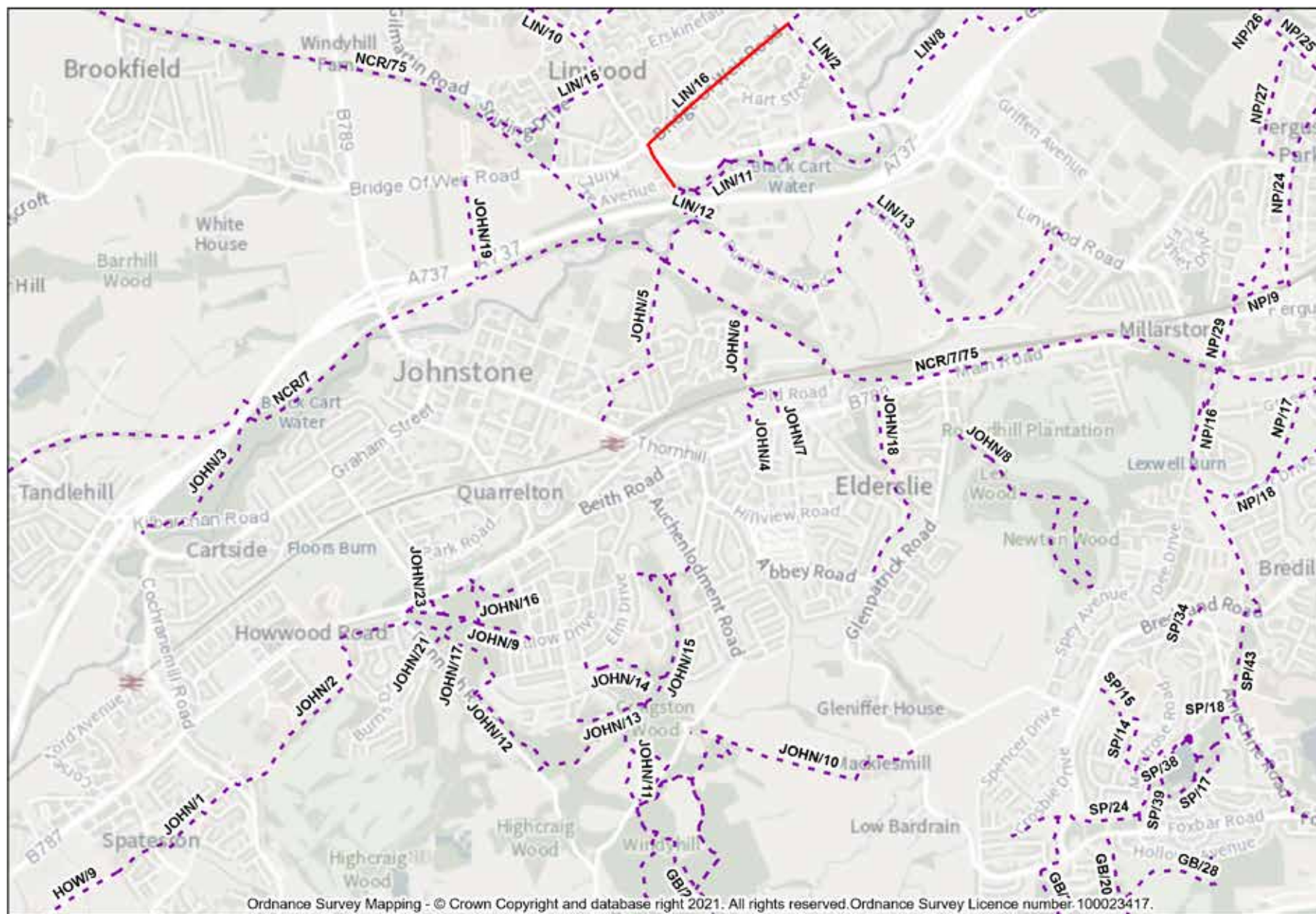
**The Johnstone and Elderslie area is served by an extensive network of recreational paths at Bluebell and Rannoch Woods within walking distance of a large number of homes. Elderslie is also served by a recreational walk at Newton Road.**

National Cycle Routes 7 and 75 provide important active travel and recreational opportunities, connecting the area with surrounding settlements.

Other core routes include linkages to Glenniffer Braes to the south and Howwood to the west.



## Johnstone and Elderslie (Core Path code JOHN)





# Johnstone and Elderslie (Core Path code JOHN)



Path	Name/location	Surface						Path width		Boundary Crossings						Bridges				Slope						Comments
		Paved	Bound	whin dust	gravel	grass	earth	^ 1.5m	v 1.5m	lock gate	unlock gate	kissing gate	stile	gap	^ 1.5m	v 1.5m	Steps	Seats	slight	medium	steep	On road	Adjacent to road	Away from road		
JOHN 1	Auchengreoch Road / Midton Road	●						●											●				●	●	Route through Spateston	
JOHN 2	Rannoch Road / Auchengreoch Road	●						●											●				●	●	Link to Johnstone High School	
JOHN 3	Kilbarchan Interchange to NCR	●							●										●					●	Signposted cycle connection	
JOHN 4	Altpatrick Gardens	●						●												●				●	Connects to NCR via JOHN 6	
JOHN 5	Johnstone Station to NCR via Miller St	●						●											●				●		Access along quiet residential streets	
JOHN 6	Old Road to NCR	●				●	●	●	●							●				●		●		●	Path through woodland to NCR	
JOHN 7	Main Rd to Old Rd via playing field	●						●												●			●	●	Connects to NCR via JOHN 6	
JOHN 8	Newton Wood				●		●	●	●					●						●				●	By golf course	
JOHN 9	Beith Road / Willow Drive	●		●		●	●	●	●					●					●					●	Route through Rannoch Woods	
JOHN 10	Auchenlodment Rd / Mackie's Mill Rd				●	●	●		●		●								●					●	Farm track. Muddy	
JOHN 11	Craigston Wood / Auchenlodment Rd			●			●	●	●							●	●		●		●			●	Steep section near burn	
JOHN 12	Elm Drive / Holly Place			●					●							●				●				●	Path through Bluebell Woods	
JOHN 13	Chestnut Place / Juniper Place	●		●				●	●								●			●	●		●	●	Path through Bluebell Woods	

continued on next page

# Johnstone and Elderslie (Core Path code JOHN)

Path	Name/location	Surface						Path width		Boundary Crossings					Bridges				Slope								Comments
		Paved	Bound	whin dust	gravel	grass	earth	^ 1.5m	v 1.5m	lock gate	unlock gate	kissing gate	stile	gap	^ 1.5m	v 1.5m	Steps	Seats	slight	medium	steep	On road	Adjacent to road	Away from road			
JOHN 14	Bluebell Woods from Elm Drive			●			●	●	●										●					●	Links within Bluebell Woods		
JOHN 15	Bluebell Woods (north)	●		●			●	●	●							●	●			●				●	Links within Bluebell Woods		
JOHN 16	Rannoch Woods from Tower Road			●				●	●					●					●	●				●	Links within Rannoch Woods		
JOHN 17	Elm Drive / Beith Road	●		●					●											●			●	●	Rannoch Woods		
JOHN 18	Main Road/ Abbey Road link	●		●	●	●		●							●					●			●	●	Includes path by Old Patrick Water		
JOHN 19	St Benedict's High School link	●	●		●				●							●			●	●				●	Access along Right of Way from NCR		
JOHN 21	Rannoch Woods from Burns Drive			●					●										●					●	Links within Rannoch Woods		
JOHN 23	Rannoch Woods adjacent to Beith Rd	●							●										●					●	Path along edge of Rannoch Woods		

# Paisley North

(Core Path code NP)

**The north of Paisley is served by a variety of greenspaces, with Core Paths designated in and around a number of parks, including Barshaw Park, Fountain Gardens and Ferguslie Gardens.**

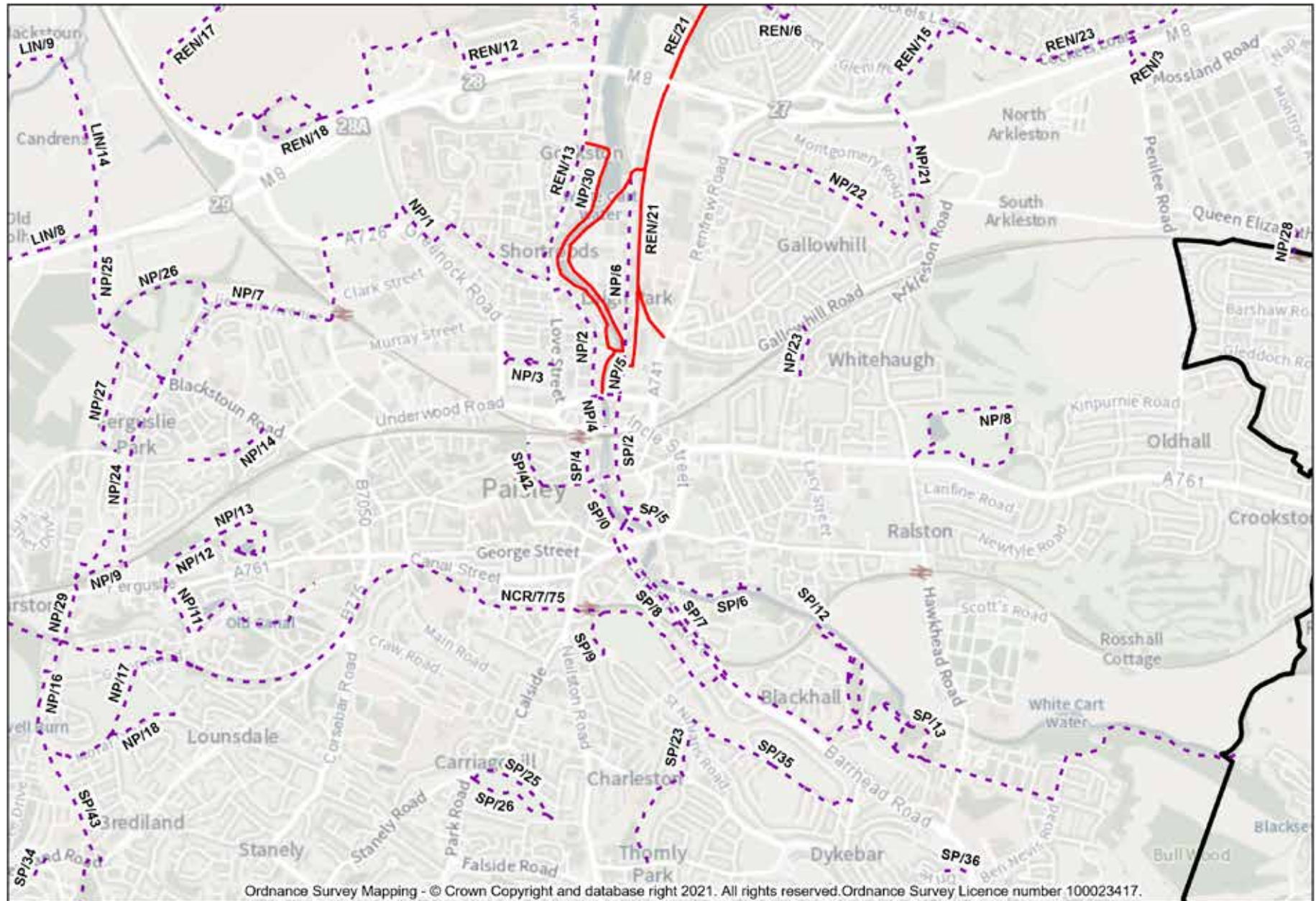
Paths also follow sections of the White Cart Water into the town centre.

The area is served by a number of active travel routes including links to Glasgow Airport to the north and National Cycle Route NCR/7/75 to the south.





## Paisley North (Core Path code NP)



## Paisley North (Core Path code NP)

NP

Path	Name/location	Surface						Path width		Boundary Crossings					Bridges				Slope							Comments
		Paved	Bound	whin dust	gravel	grass	earth	1.5m ^	1.5m v	lock gate	unlock gate	kissing gate	stile	gap	1.5m ^	1.5m v	Steps	Seats	slight	medium	steep	On road	Adjacent to road	Away from road		
NP 1	Cycle link Greenhill Rd / Springbank Rd	●						●	●										●				●	●	Signposted as cycle route	
NP 2	Cycle link along New Sneddon St	●							●							●			●			●	●		Signposted as cycle route	
NP 3	Fountain Gardens	●							●		●							●	●					●	Grand Fountain	
NP 4	Old Sneddon Street / Niddry Street	●							●								●		●					●	Riverside walkway	
NP 6	Abercorn Street	●							●										●			●	●		Links to aspirational route	
NP 7	Ferguslie Park Avenue (north)	●							●										●			●	●		Signposted as cycle route	
NP 8	Barshaw Park	●							●									●	●	●				●	Barshaw Park	
NP 9	Ferguslie (Belltrees)	●						●	●										●					●	Accesses under railway line	
NP 11	Link by Old Canal to West Primary Sch	●						●	●							●			●				●	●	Adjacent to old canal	
NP 12	Main Drive into Ferguslie Gardens	●							●		●									●				●	Old road into park	
NP 13	Paths in Ferguslie Gardens	●							●		●							●		●				●	Public park	
NP 14	Blackstoun Road / Dalskeith Avenue	●							●									●	●					●	Tree lined route in park	
NP 16	Morar Dr / Fulbar Rd cycle link	●						●	●											●			●	●	South Paisley Strategic Link	

continued on next page



## Paisley North (Core Path code NP)

Path	Name/location	Surface						Path width		Boundary Crossings						Bridges				Slope								Comments
		Paved	Bound	whin dust	gravel	grass	earth	^ 1.5m	v 1.5m	lock gate	unlock gate	kissing gate	stile	gap	^ 1.5m	v 1.5m	Steps	Seats	slight	medium	steep	On road	Adjacent to road	Away from road				
NP 17	Garry Drive to NCR via playing field	●							●										●				●	●	Short on-street section			
NP 18	Morar Drive	●							●										●				●	●	Follows edge of playing field			
NP 21	Arkleston	●				●	●	●	●								●		●				●	●	Extended along footway			
NP 22	Gallowhill Primary School connections	●						●	●										●				●	●	Footways and off-road paths			
NP 23	Greenhill Gardens / Gallowhill Road	●							●							●	●			●			●	●	Footbridge over railway			
NP 24	Ferguslie Park Avenue (south)	●							●										●				●	●	Access under railway			
NP 25	Blackstoun Rd north to Candren Rd	●						●	●										●				●		Signposted as cycle route			
NP 26	Blackstoun Road / Recreation Ground	●			●	●	●	●	●										●					●	Along edge of recreation ground			
NP 27	Barskiven Road to Blackstoun Road	●			●			●											●					●	Route through open space			
NP 28	Hillington West Railway Station	●							●							●	●		●					●	Footbridge over railway			
NP 29	Fulbar Road from NCR to Ferguslie	●						●											●				●		Signposted as cycle route			
NP 5	Riverside south of Carlile Place																								Aspirational Core Path			
NP 30	Paisley Harbour																								Aspirational Core Path			





# Paisley South

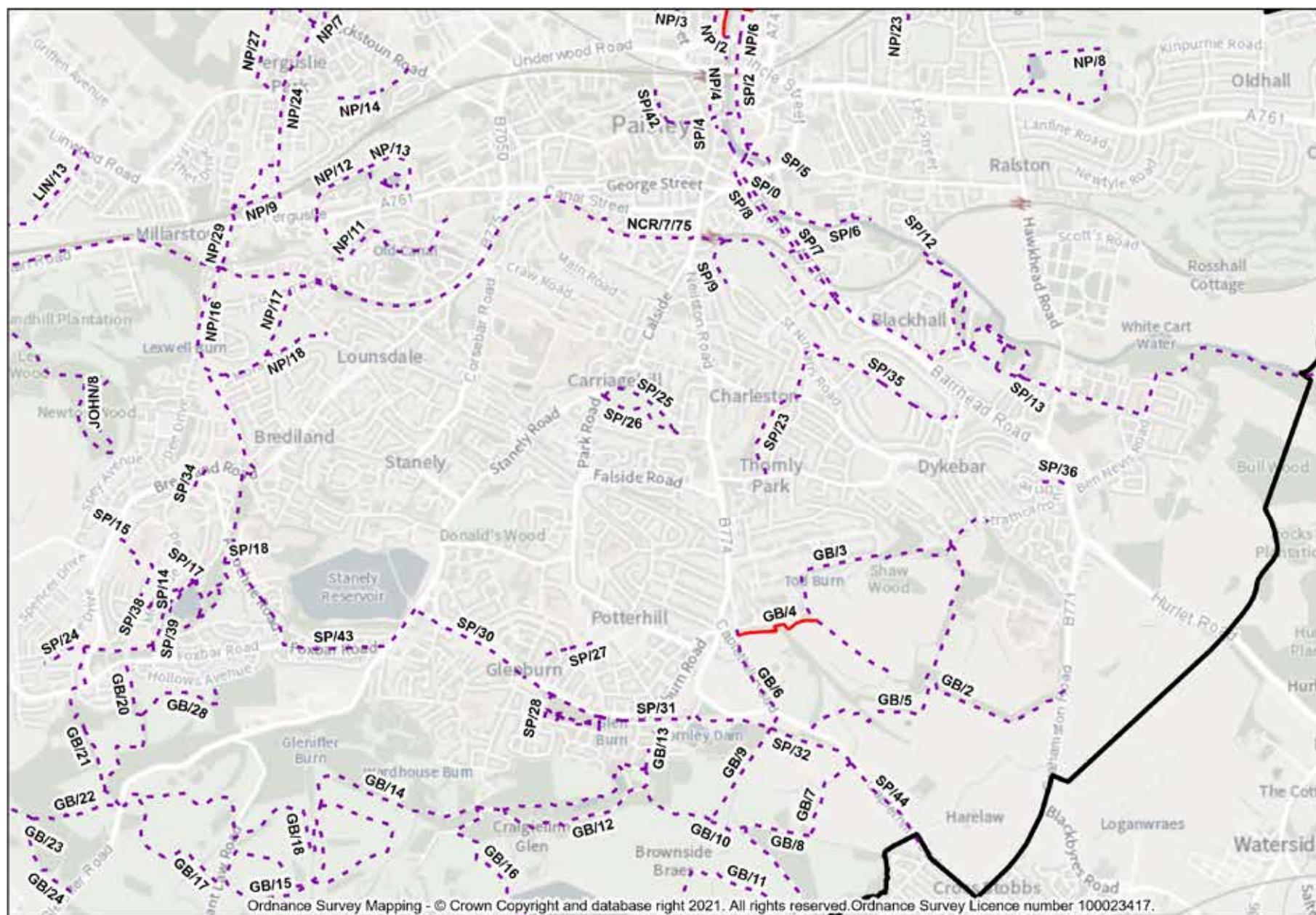
(Core Path code SP)

**Core Paths are designated throughout south Paisley and within the centre of the town.**

Further south, Core Paths provide access to a variety of greenspaces, including Brodie Park and Local Nature Reserves at Durrockstock Park and Jenny's Well.

The area is also served by National Cycle Route NCR/7/75 which provides active travel towards Elderslie and Johnstone to the west and to Glasgow via Hawkhead to the east. The South Paisley Strategic Link also provides a cycle route to Barrhead to the south-east.

## Paisley South (Core Path code SP)



# Paisley South (Core Path code SP)

SP

Path	Name/location	Surface						Path width		Boundary Crossings						Bridges				Slope								Comments
		Paved	Bound	whin dust	gravel	grass	earth	1.5m ^	1.5m v	lock gate	unlock gate	kissing gate	stile	gap	1.5m ^	1.5m v	Steps	Seats	slight	medium	steep	On road	Adjacent to road	Away from road				
SP 0	Hammills Bridge to Dunn Square	●							●										●				●		Riverside walkway			
SP 2	Smithhills Street	●						●	●										●				●		Link to Town Hall / Abbey from north			
SP 4	Gauze Street to junction with Smithhills Street	●							●									●		●				●	Guaze St to junct'n with Smithhills St			
SP 5	Abbey Close and link to Mill Street	●	●						●										●				●	●	Access to Abbey and Town Hall			
SP 6	White Cart Water path at Seedhill	●							●										●				●	●	Riverside route			
SP 7	Lonend Cycle Lane (north bound)	●						●												●	●	●			Connects with NCR/7/75			
SP 8	Lonend Cycle Lane (south bound)	●						●												●	●	●			Connects with NCR/7/75			
SP 9	Canal Station to Saucelhill Terrace	●						●	●											●				●	Saucel Hill Park			
SP 12	Jenny's Well (west)		●		●			●					●						●					●	Local Nature Reserve			
SP 13	Jenny's Well (east)	●	●		●			●					●					●	●	●				●	Local Nature Reserve			
SP 14	Montrose Way / Woodstock Avenue	●							●								●		●				●	●	Links to primary school and Care Home			
SP 15	Woodstock Way	●							●								●			●				●	Adjacent to primary school			
SP 17	Dam walk at Durrockstock Park	●						●	●						●	●		●	●					●	Local Nature Reserve			
SP 18	Woodland walk at Durrockstock Park	●						●	●							●		●	●	●				●	Local Nature Reserve			
SP 23	Lochfield Road / St Ninian's Road	●						●	●								●		●	●			●	●	Steps next to Lochfield Road			

continued on next page



# Paisley South (Core Path code SP)

Path	Name/location	Surface						Path width		Boundary Crossings						Bridges				Slope							Comments
		Paved	Bound	whin dust	gravel	grass	earth	1.5m ^	1.5m v	lock gate	unlock gate	kissing gate	stile	gap	1.5m ^	1.5m v	Steps			Seats	slight	medium	steep	On road			
SP 24	Crosbie Dr / Foxbar Rd / Waverley Way	●						●	●								●		●				●	●	Path links through parkland at Foxbar		
SP 25	Brodie Park (northern route)	●							●									●	●	●				●	Brodie Park		
SP 26	Brodie Park (southern route)	●						●	●									●	●	●				●	Brodie Park		
SP 27	Colonsay Road to Highfield	●							●											●				●	Steep path linking streets		
SP 28	Glenburn Road/ Glenfield Road	●	●		●			●	●								●		●	●				●	Links through greenspace		
SP 30	Cycle link Braehead Rd to Glenfield Ave	●							●										●				●	●	South Paisley Strategic Link		
SP 31	Cycle link Glenfield Ave to Glenfield Rd	●						●	●										●	●			●	●	South Paisley Strategic Link		
SP 32	Cycle link Glenfield Rd Brownside Farm	●						●	●									●	●					●	South Paisley Strategic Link		
SP 34	Amochrie Way	●						●									●			●				●	Links to shops and services		
SP 35	Hunter’s Hill	●						●	●								●		●	●			●	●	Link across parks and to school		
SP 36	Dykebar Hill	●							●								●				●			●	Link to school across Hurlet Road		
SP 38	Waverley Road / Montrose Drive	●						●	●								●			●	●		●	●	Overlooks Durrockstock Park		
SP 39	Waverley Road at Durrockstock Park	●						●	●								●		●				●	●	Link to Foxbar Rd & Gleniffer Braes		
SP 42	Church Hill and Stoney Brae		●						●												●			●	Part cobbled		
SP 43	Cycle link Brediland Rd / Glenfield Rd	●							●											●		●	●	●	South Paisley Strategic Link		
SP 44	Caplethill Road	●							●											●			●		South Paisley Strategic Link		



# National Cycle Route

(Core Path code NCR)

**Renfrewshire is served by National Cycle Routes 7 and 75. These form a single route running west from the Glasgow boundary through Paisley from Hawkhead to Millarston and then through Elderslie and Johnstone.**

At the western end of Johnstone the cycle route splits into two. NCR/75 runs north-west via the outskirts of Linwood to Bridge of Weir and then leaves Renfrewshire just south of Kilmacolm. NCR/7 runs south-west through Kilbarchan and Lochwinnoch before crossing into North Ayrshire.

The entirety of the above routes within Renfrewshire are Core Paths.

# The Land Reform (Scotland) Act 2003 and Core Paths

---

The Land Reform (Scotland) Act 2003 establishes a statutory right of responsible access to most land and inland water. There are some exceptions, such as private gardens, where access rights do not apply.

People exercising access rights on land have a duty under the Act to exercise such rights responsibly. Similarly, the managers or owners of land over which access rights apply have a duty to use, manage and conduct the ownership of the land in a manner which is responsible in respecting these rights.

Guidance on access rights and “responsible” behaviour is set out in the Scottish Outdoor Access Code. The code can be found online at **[www.outdooraccess-scotland.com](http://www.outdooraccess-scotland.com)**

The code establishes three key principles for responsible access which apply equally to the public and land managers:-

- **Respect the interests of other people.**

People exercising their access rights should respect the privacy, safety and livelihoods of those living and working in the countryside and the needs of other people enjoying the outdoors. Land managers should respect people’s use of the outdoors and their need of a safe and enjoyable visit.

- **Care for the environment.** People exercising their access rights should look after the places they visit and leave the land as they found it. Land managers should maintain the natural and cultural features which make the outdoors attractive to visit and enjoy.

- **Take responsibility for your own actions.** People exercising their access rights must understand that the outdoors cannot be made risk free. They should act with care at all times for their own safety and that of others. Land managers should act with care at all times for people’s safety.









## Further Information

For more information visit  
Renfrewshire Council website at:

**[www.renfrewshire.gov.uk](http://www.renfrewshire.gov.uk)**

or contact

**[strategyandplace@renfrewshire.gov.uk](mailto:strategyandplace@renfrewshire.gov.uk)**

### **Placemaking Team**

Chief Executive's Service  
Renfrewshire Council  
Cotton Street  
Paisley  
PA1 1WB

**0300 3000 144**