



FAMILY HISTORY



Sources in Renfrewshire

Introduction

More and more people are interested in finding out about their ancestors, about their lives, their homes, their work. Developments on the web have increased people's access to information about their families from across the world but there can be nothing quite as exciting as seeing the real thing, in the place where your people lived.



Many primary sources of information on the old County of Renfrew are still located in the county. If you are interested in researching your family history, this leaflet will provide you with the basics - what is held where, and how to access it. It will also provide contact details for local history and family history societies.

Remember, staff in the various departments and organisations are often willing to help in your search, but please give as much notice and as much information in advance as you can, to help them refine their investigations.



..is it proper is it right..

Paisley Central Reference and Local Studies Library (LSL),

68 High Street, Paisley PA1 2BB tel 0141 889 2360, fax 0141 887 6468,
e-mail locstuds.els@renfrewshire.gov.uk

This is the main location for much of the area's resource. The LSL is situated in Paisley Central Library and is open from 9.00 am until 8.00 pm Monday to Friday and 9.00 am till 5.00 pm on Saturday. The collection is extensive and includes current and historical sources which may help you with your family history research.

Copying The LSL can provide copying services, subject to copyright, for some of the resources in the collection. However, not all the material is suitable for copying. Staff will advise you on the service and charges.

...of the deceased...

The Library's Resources

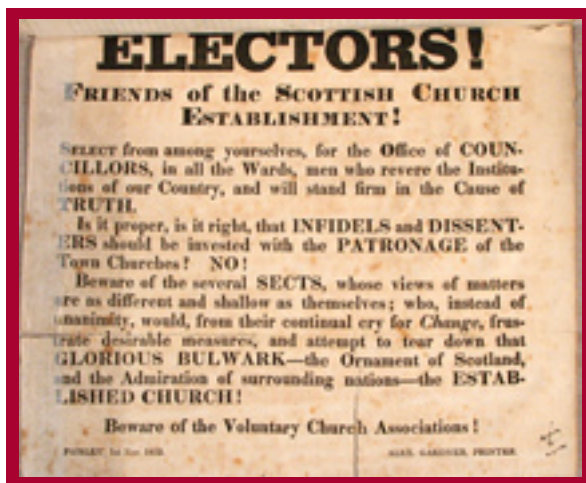
Census Returns are available for Renfrewshire on microfilm in the LSL. The first census to include names was carried out in 1841 and thereafter every 10 years. Census records are closed for 100 years, so the latest census return available is for 1901. There are some supporting indexes to names and streets, but there is not a complete set of each for each town in Renfrewshire.

Old Parish Records (OPRs)

The Old Parish Records give information on births and marriages, and some deaths prior to 1855. From 1855 registration was compulsory and these records are available from the local Registrar - see entry pg.?? or from the General Registrar Office for Scotland in Edinburgh. The OPRs in Renfrewshire are seldom available much earlier than the mid 18th century. There is a low registration amongst Catholics and Nonconformists. The records can be accessed on microfilm in the LSL and online at www.scotlandspeople.gov.uk

International Genealogical Index (IGI)

The IGI is compiled by the Church of Jesus Christ of the Latter Day Saints and is a worldwide on-line searchable data-base of Genealogical Vital Record information. It is based on the OPR. There are inaccuracies in transcription and sometimes





multiple records for the same person. It is recommended that the information from the IGI is checked wherever possible. The IGI is available on the LDS Family Search web site at www.familysearch.org

“Monumental Inscriptions for Renfrewshire”.

This is another useful source for pre-1855 burials. It has a name index and is available in the LSL.

..son of the late..

Local Newspapers

Local Newspapers dating from 1824 to the present are available in the LSL. These include indexed extracts concerning Renfrewshire from the Glasgow Journal between 1755 and 1774; the Paisley Advertiser and the Renfrewshire Advertiser from 1824 to 1850; the Paisley Herald and Renfrewshire Advertiser from 1853 until 1883; the Paisley and Renfrewshire Gazette from 1864 to the present; the Paisley Daily Express from 1874 to the present; the Johnstone Advertiser from 1957 to 1982; the Renfrew Press from 1925 to 1928 and from 1970 to 1983; the Renfrew Post from 1983 to 1989.

“Paisley Pamphlets”.

This collection of ephemera includes subscription lists, reports, minutes, rules and regulations, financial statements, and AGMs of a wide range of local societies and institutions such as the Paisley Philosophical Society, Rowbank Angling Club and Paisley Infirmary. The Pamphlets cover a range of topics, chiefly politics and there are catalogues for exhibitions, memorabilia such as concert tickets and

..record certified by the keeper..

programmes. Each volume has a table of contents at the beginning and there is a single volume cumulative index of the whole collection. The collection, probably put together by antiquarian Robert Brown of Underwood, is not solely devoted to Paisley, but includes information on the surrounding towns and villages.

Paisley Poor Law

The collection of Poor Law volumes is one of the richest in Scotland. There are volumes with indexes from 1839 until 1930. There is a 70 year rule of closure on these records. Not all the volumes are kept in the Local Studies Library, but those elsewhere can be requested in advance and library staff will notify you when they are available to be viewed in the LSL.

The information in the applications for poor relief can be of great help to genealogists. Records give details such as name, age, marital status, previous spouses, children, employment, other sources of income religion and the reason for the application.

Postcards

The LSL has a collection of over 1,000 postcards, the earliest dating from 1890.

The Cairn of Lochwinnoch

This is a collection of 46 leather bound volumes of manuscript, including an index. They contain information often derived from interviews with local people and presenting a lively picture of life in Lochwinnoch and the surrounding area. They include family trees, births,

No. 15177

- 1 Applicant's Name,
- 2 Present Residence,
- 3 Married or Single, Widower or Widow. If Child, Orphan, Deserted or Bastard,
- 4 Name of each Child living with Applicant,
- 5 Applicant's Name,
- 6 Place of Birth,
- 7 Trade or Occupation,
- 8 If wholly or partially Disabled,*
- 9 Description of Disablement,
- 10 Means and Resources of Applicant besides Parochial Relief,
- 11 Names, Ages, and Weekly Earnings of Parents,
- 12 Names, Ages, and Weekly Earnings of children not living with Applicant, and whether married, and Number of Children,

3 Applicant's Age, 43

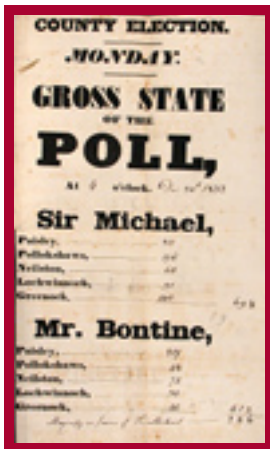
4 Place of Birth, Principal Island

7 Occupation, et day labourer

9 Description of Disablement, Was employed with John Lindsay farmer East Lothian on 22^d September last, and while lying resting in the field between 2 & 3 o'clock of that day a gun loaded with hail was discharged at him by Robert Fleming gamekeeper with Campbell of Blythswood which entered his body arms legs and head and which has wholly deprived him of his eyesight besides damaging him otherwise in his person

11 Names, Ages, and Weekly Earnings of Parents,

12 Names, Ages, and Weekly Earnings of Children not living with Applicant, and whether Married, and



Married in Paisley 1817

marriages, deaths, murders and suicides, a heads-of-families census for Lochwinnoch dated 1821, extracts and clippings from newspapers and books. There are a further ten volumes associated with the Cairn of Lochwinnoch, including Lochwinnoch Matters, the Bridgend Papers, the Craigend Papers and Auld Ballats with Lochwinnoch Matters. They were all compiled by Andrew Crawford who was born in Johnshill Lochwinnoch in 1786 and died in the village in 1854.

Trade Directories (also known as Post Office Directories) the LSL's collection of Renfrewshire Trade Directories begins in 1810 for Paisley and continues until 1937, although it is not complete.

Not all towns and villages are included and the type of information varies from year to year.

Trades Societies Records - the LSL holds minutes of a number of trade societies including the minutes of the Paisley Society of Tailors from 1658 - 1764, the Hammermen from 1761 - 1803, an index to the Incorporation of Old Weavers in Paisley 1729 - 1900 (the records are held by the Museum).

Poll Tax rolls of 1695, Hearth Tax records of 1691 - these taxes were both designed to raise funds for the armed forces. For the Poll Tax all those liable to pay are listed. There is an index for each parish as well as a place index. The Hearth Tax lists only householders, there is an index of names.

Sasines from 1781 - 1947 - these document the transfer of ownership of a piece of land or a building. Names of new and former owners and a description of the property are included. The LSL holds Sasines for Renfrewshire from 1781 to 1947

Confirmations and Inventories - from 1877 to 1936 the Calendar of Confirmations and Inventories indexes all wills that have been confirmed in Scotland between 1877 and 1936. Estates valued at over £50 sterling were included. Confirmations are arranged alphabetically and bound by year. Available in LSL

Valuation rolls. These record property, listing owners, occupiers and rateable values. LSL holds a large collection, but as yet there is no accurate record of holdings.



...doorkeeper in factory

Official Records

The LSL holds the official records of the former burghs of Paisley, Johnstone and Renfrew, the records for the County Council of Renfrewshire, Renfrew District Council, Strathclyde Region and those for Renfrewshire Council.

Maps

The LSL Renfrewshire map collection contains maps and plans of Renfrewshire from circa 1490 to the present. The earliest map in the collection is a plan of Paisley between 1490 and 1545 from the Chartulary of Paisley Abbey. Eminent surveyors such as Timothy Pont, and John Ainslie are included, as well as local surveyors such as Charles Ross and James Knox. Ordnance Survey maps include cover at 1:10560 from 1857 to the 1940s, 1:2500 from 1857 to the 1970s, 1:5000 for more recent maps. There is also 1:500 cover for Paisley for the 1856 -58 edition.



Paisley Museum and Art Galleries,

*High Street, Paisley PA1 2BA,
Tel 0141 889 3151,
fax 0141 889 9240.
Open 10.00 - 17.00 Tuesday - Saturday,
Sun 14.00 - 17.00.*

Died 1824

The Museum holds a collection of more than 20,000 historic photographs dating from the 1850's to the present day. Street scenes, buildings and industries feature prominently.

The Archive collection, shared jointly with Paisley Central Library includes records from J & P Coats, the world-famous thread manufacturers, together with collections relating to Paisley, Renfrew, Johnstone and other parts of Renfrewshire. Copies of images from the historical photographic collection are available on request.

The history collections of archaeological, social and industrial history artefacts tell the story of Renfrewshire's people from the earliest inhabitants right up to the present day. Food, textiles, engineering and shipbuilding industries of the 19th and 20th centuries are represented by a variety of objects.

Contact the Museum by letter, phone or email (museums.els@renfrewshire.gov.uk) giving as much notice as possible and as much detail as possible to help refine any search before you visit.



Surnames from Medieval Renfrewshire

Italics indicate where and when the local surname originated. For details see 'Surnames native to Renfrewshire,' Alan Steel, Journal of Renfrewshire Family Society, No 15, Sept 2006.



..now officer of excise

Registration Offices

Area Office and Registration of Births, Deaths and Marriages
(Corporate Services Department)

1 Cotton Street, Paisley PA1 1BU

Tel: 0141 840 3388

Fax: 0141 840 3377

E-Mail: marion.mcglynn@renfrewshire.gov.uk

louise.cullen@renfrewshire.gov.uk



Records of births, deaths and marriages dating back to 1855 are held in the registration offices, which hold the records for the whole of the Renfrewshire area.

Our offices also have on-line access to the alphabetical lists of entries (indices) held at the General Register Office, Edinburgh. These alphabetical lists cover the statutory records of births, deaths and marriages from 1855; Old Parish Registers and the Census Records of 1881, 1891 and 1901 for the whole of Scotland.

The General Register Office for Scotland (GROS) has been engaged in a major project to transform the way it makes its records available to the public. This has led to the introduction of Digital Imaging of Genealogical Records of Scotland's people (DIGROS). This facility enables more extensive genealogical research locally. DIGROS has created digital images of all paper records held in General Register Office for Scotland, but equally importantly DIGROS allows registrars to search these from local registration offices for customers and trace the actual register entry - regardless of where in Scotland the event was registered. The records available include images of birth certificates 1855 to 2004, images of death certificates 1855 to 2004, images of marriage certificates 1855 to 2004 and images of census returns 1871, 1891 and 1901.



If you are planning to make a trip to Renfrewshire to research your family history, be as prepared as possible for your visit. You may ask for a general search of the records. This means a search over any period of years for any number of entries made with the help

of the Registrar. A customer need not buy an extract or certificate, but is allowed to look at the specified register entry or entries there and then, and may take notes in pencil. No search may be made, or fee charged for a search, in a current register or any still-birth register. If a customer requests to see an entry in the current Register, he/she would have to purchase an extract at the current fee. Please contact the office to make an appointment, at least a week in advance of your proposed visit. One hour sessions, for which a fee is payable, will be offered.



Burial Grounds records

Renfrewshire Council

*Environmental Services Cemeteries Section,
Renfrewshire Council Headquarters South,
Cotton Street, Paisley, PA1 1UG
Telephone 0141 840 3504 / 0141 842 5979
Fax 0141 840 3192*

Office hours

Monday -Thursday 8:45am - 4:45pm

Friday 8:45am - 3:55pm

Sat / Sun closed

The council is responsible for burial records of the locations below. Depending on the accuracy of the information which you can provide, lair searches may be charged at £26 + vat. per 30 minutes of staff time.

Cemeteries

Abbey Cemetery - Abbey Road, Elderslie
PA5 9UR

Date opened - 21 January 1887

Broomward Cemetery - Old Road, Elderslie
PA5 9EH

Date opened - 30 October 1991

Born 1824

Proclamation

BY THE
Lieutenancy, Sheriff,
And Justices of Peace,
OF THE COUNTY OF RENFREW,
And by the Provost and
Magistrates of Paisley.

ALL well-disposed Inhabitants of the Town and Suburbs of Paisley are hereby warned to keep themselves and their whole Household within doors after

Eight o'Clock in the Evening,

so long as the present riotous disposition continues, certifying to all that disregard this Proclamation, that they will have themselves to blame for any injury they may sustain from the Military force, which the Magistracy are under the necessity of employing, in the most decisive manner, to prevent a repetition of the late riotous assemblies, and mischievous attempts to pillage, plunder, and destroy.

A Reward of 30 Guineas

is also hereby offered, for such information as will lead to the discovery and conviction of the miscreants who have been concerned in breaking Street Lamps and Windows, or in destruction of other Property.

*Council Chamber, Paisley, }
15th Sept. 1819. }*

J. Neilson, printer.

Hawkhead Cemetery - 133
Hawkhead Road, Paisley PA2 7BE
Date opened - 13 April 1891

Arkleston Cemetery - Arkleston
Road, by North Arkleston Farm,
Paisley PA3 4JD
Date opened - 7 April 1902



Bishopton Cemetery - Houston
Road, Bishopton PA7 5NX
Date opened - 14 November 1938 Extension 1994

Inchinnan Cemetery - Old Greenock Road, Inchinnan PA4 9PH
Date opened - 22 January 1929

Kilbarchan Cemetery - Bridge of Weir Road, Brookfield PA5 8UP
Date opened - 12 February 1897 Extension opened 1997

Houston Cemetery - Crosslee Road, Houston PA6 7EJ
Date opened - 19 November 1857 Extension opened 1999

Lochwinnoch Cemetery - Linthills Road, Lochwinnoch PA12 4DJ
Date opened - 11 May 1895 Extension opened 2004
Woodland Burial Site opening summer 2006

..widow who has 2 children..



Churchyard Records

St. Columba's Gaelic
Churchyard - Oakshaw, Paisley
PA1

Renfrew Parish Churchyard -
High Street, Renfrew PA4
Date opened - 15th century

Erskine Old/New Churchyard
- Erskine Ferry Road,
Bishopton PA7
Date opened - unknown



Inchinnan Parish Churchyard (Old Hallows), Greenock Road, Inchinnan PA4
Date opened - unknown

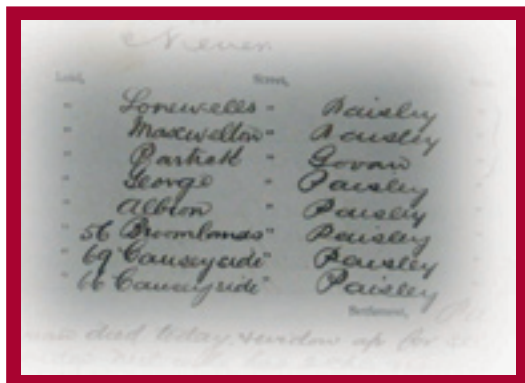
Houston and Killellan - Kirk Road, Houston PA6
Date opened - 1635

Paisley Cemetery Company Ltd.

Woodside, 46 Broomlands Street, Paisley PA1 2NP. Tel. 0141 889 2260,
fax 0141 848 7748. Office hours are Monday to Friday 9.00 - 1.00, 2.00 - 5.00,
closed 1.00 - 2.00, Saturday 9.00 - 12.00 noon

The company owns and operates Woodside Cemetery and Crematorium. Cemetery records go back to 1845 and cremation records to 1938. Genealogical searches

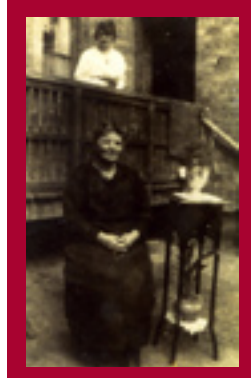
can be carried out if the name and date of death, or a close approximation, are provided. A charge may be made for this service. All enquiries should be made to the Registrar at the above address. The Book of Remembrance may be viewed at the Crematorium Monday - Friday 9.00 - 5.00, Saturday 9.00 - 12.00, Sunday 2.00 - 4.00. Closed public holidays.



..has residing with her granddaughter

The Latter-Day Saints Family History Centre

Glenburn Road, Paisley, Tel. 0141 884 2780. The Centre has the facility to order all the microfilms and Microfiche available from the Family History Centre in Salt Lake City. The Centre has extensive Irish records.



Sma' Shot Cottages

11 - 17 George Place, Paisley, PA1 2HZ, tel 0141 889 1708, e-mail sma.shot@virgin.net. Open April - September, Wednesdays and Saturdays 12.00 till 16.00. The weaver's cottage and mill worker's house hold a collection of relevant artifacts, plus the minute book of the Incorporation of Old Weavers in Paisley, dating from 1704. The book is not available for research, but a microfilm copy is held in Paisley Central Library Local Studies Library.

Paisley Threadmill Museum, Mile End Mill

Seedhill Road, Paisley. Open April – September, Wednesdays and Saturdays 12.00 till 16.00. Based in a converted mill building, the museum holds a collection of artifacts and photographs relating to work in the Coats and Clark mills.

Local Societies

Renfrewshire Family History Society may be contacted c/o Paisley Museum and Art Galleries, High Street Paisley, PA1 2BA, or e-mail through www.rfhs@ntlworld.com. The Society has recently set up a small resource centre in Paisley Abbey. For more information contact the Society. Regular meetings are held in Paisley Museum on the third Thursday of the month at 7.30.

Renfrewshire Local History Forum

is the umbrella group for several smaller local history societies based throughout the area, and the Archaeology Section. Contact the Forum through www.rlhf.info.



Useful family history websites

From the many sites for family historians, the Local Studies Library has found these particularly useful, both for beginners and for more experienced researchers.

Scotland's people - the official government source of genealogical data for Scotland
www.scotlandspeople.gov.uk
General Register Office for Scotland www.gro-scotland.gov.uk

Family Search www.familysearch.org

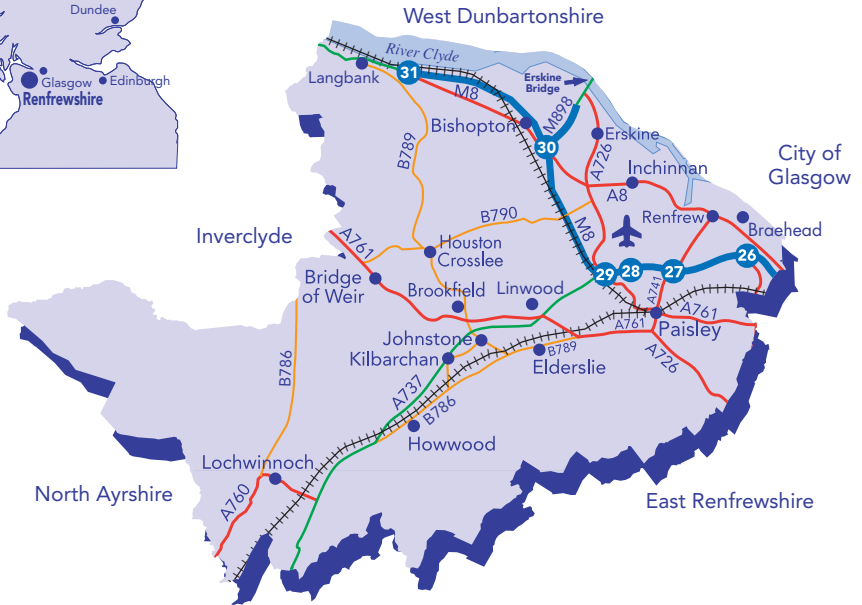
Renfrewshire Family History Society www.renfrewshirefhs.co.uk

The Association of Scottish Genealogists and Records Agents www.asgra.co.uk

Scottish Genealogy Society www.scotsgenealogy.com

Family Records - a site run by a consortium of government departments which hold records and other sources to help with family research www.familyrecords.gov.uk





© Crown copyright. All rights reserved Renfrewshire Council O.S. licence RC100023417 2004.

If you plan to visit Renfrewshire to take your family history researches further, you will find information on accommodation in the area on www.visitscotland.com or www.see.glasgow.com. Alternatively contact the tourist information centre in Paisley on 0141 889 0711, or on paisley@visitscotland.com

Travel by air couldn't be easier - Glasgow International Airport is just 1.5 kilometres from the centre of Paisley. By train, Glasgow Central Station, which is a hub for long distance routes, is 11 minutes from Paisley with a service every 10 - 15 minutes. For more information see www.nationalrail.co.uk

Published by Renfrewshire Council Department of Planning & Transport with assistance from Renfrewshire Council Libraries Service, Environmental Services Dept, Registrars Service, Alan Steel & local history groups. Images from Paisley Museums & Art Galleries, Renfrewshire Libraries Service & Renfrewshire Council staff personal collections.

