

**General Profile for Areas  
in Renfrewshire Council**

**July 2004**



**Area: Settlement14 – Paisley**

**Table 1 Basic Facts**

**Population**

All people	75,868
All people resident in households	74,574
All people resident in communal establishments	1,294

**Households**

All households	35,107
Housing stock	38,326

**General**

Area (hectares)	3,657
Some knowledge of Gaelic	769
Ethnic minority	900

**Common Age Bands**

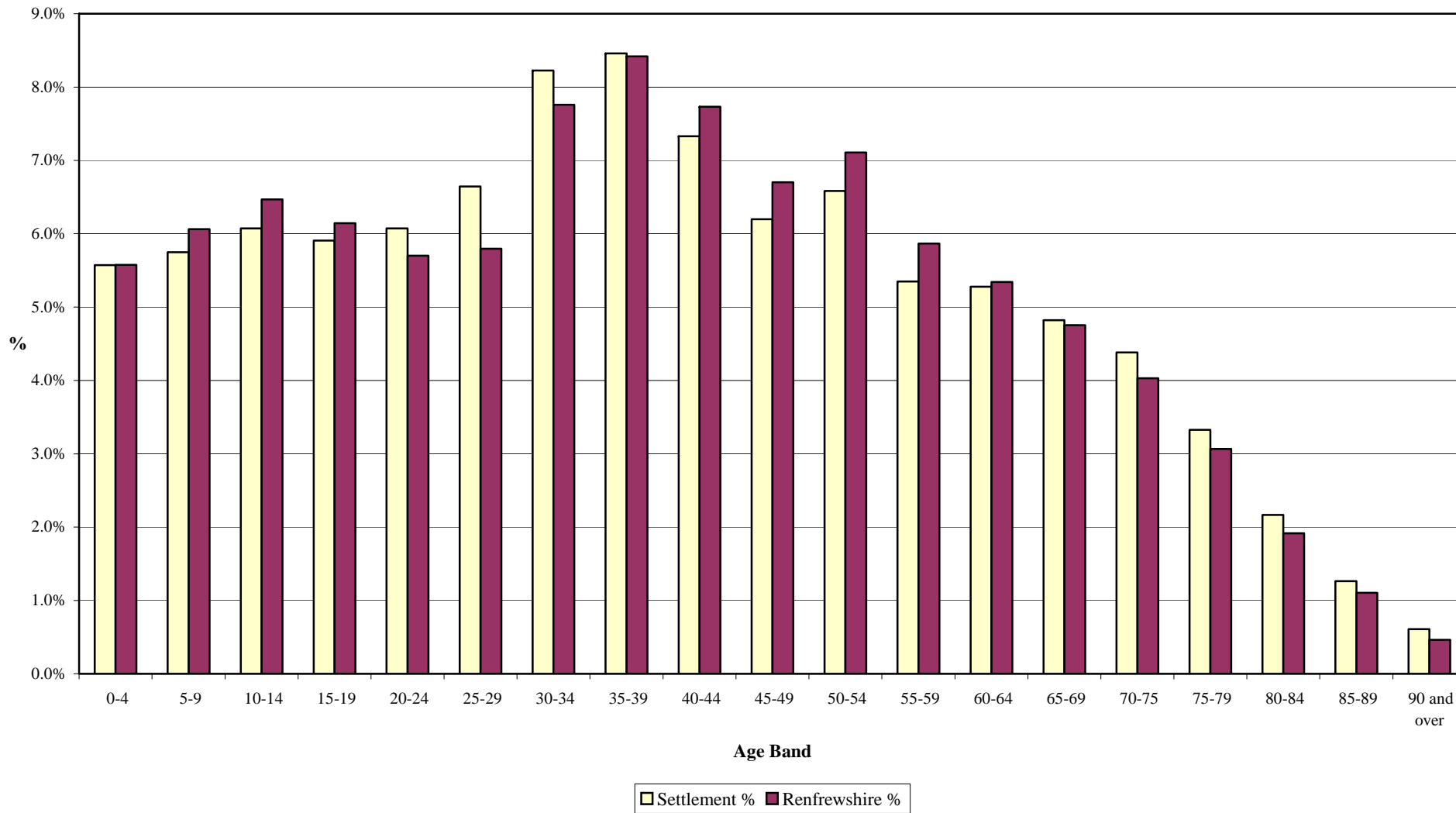
	<b>Male</b>	<b>Female</b>	<b>All People</b>	<b>%</b>	<b>Renfrewshire %</b>
Children 5 - 16	5,549	5,286	10,835	14.3%	15.1%
Under 18s	8,532	8,233	16,765	22.1%	23.1%
Working age population (16-59/64)	23,650	23,396	47,046	62.0%	62.4%
Economically Active population (16-74)	18,789	17,542	36,331	47.9%	48.8%
Pensioners (60/65)	4,891	9,817	14,708	19.4%	18.2%
People over 75	1,838	3,750	5,588	7.4%	6.6%
People over 85	323	1,098	1,421	1.9%	1.6%

**Table 2 Resident Population**

<b>Age Group</b>	<b>Males</b>	<b>Females</b>	<b>Total</b>	<b>Settlement %</b>	<b>Renfrewshire %</b>
0-4	2,157	2,069	4,226	5.6%	5.6%
5-9	2,195	2,166	4,361	5.7%	6.1%
10-14	2,372	2,234	4,606	6.1%	6.5%
15-19	2,260	2,221	4,481	5.9%	6.1%
20-24	2,183	2,425	4,608	6.1%	5.7%
25-29	2,350	2,691	5,041	6.6%	5.8%
30-34	2,982	3,259	6,241	8.2%	7.8%
35-39	3,075	3,342	6,417	8.5%	8.4%
40-44	2,667	2,893	5,560	7.3%	7.7%
45-49	2,344	2,357	4,701	6.2%	6.7%
50-54	2,502	2,492	4,994	6.6%	7.1%
55-59	1,908	2,150	4,058	5.3%	5.9%
60-64	1,866	2,138	4,004	5.3%	5.3%
65-69	1,619	2,039	3,658	4.8%	4.8%
70-75	1,434	1,890	3,324	4.4%	4.0%
75-79	965	1,558	2,523	3.3%	3.1%
80-84	550	1,094	1,644	2.2%	1.9%
85-89	231	729	960	1.3%	1.1%
90 and over	92	369	461	0.6%	0.5%
<b>Total</b>	<b>35,752</b>	<b>40,116</b>	<b>75,868</b>	<b>100.0%</b>	<b>100.0%</b>

Note: Figures are rounded to 1 decimal point

### 5 Year Age Bands - Renfrewshire & Settlement Comparison



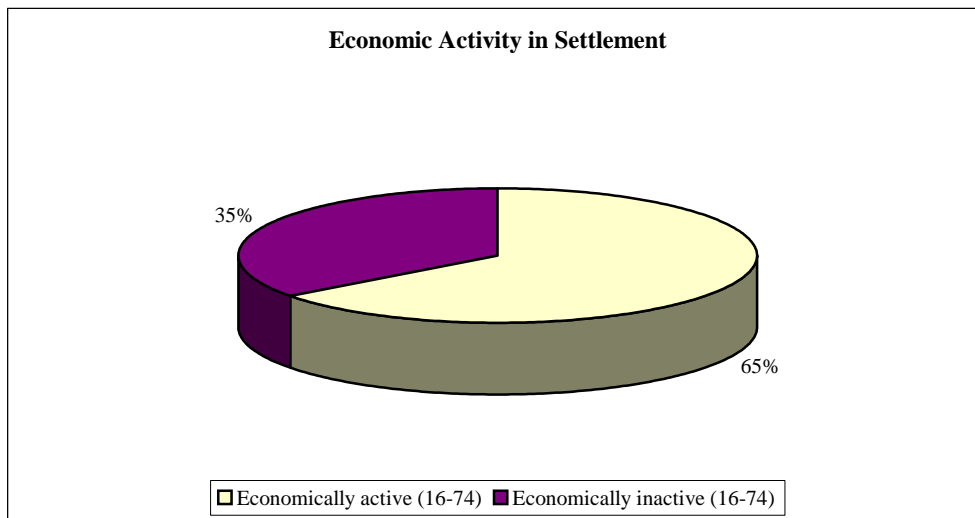
**Table 3 Marital Status**

<b>Marital Status</b>	<b>No</b>	<b>%</b>	<b>Renfrewshire %</b>
Single (never married)	34,220	45.1%	43.1%
Married (first marriage)	25,036	33.0%	36.8%
Re-married	2,887	3.8%	4.0%
Separated (but still legally married)	2,647	3.5%	3.1%
Divorced	5,058	6.7%	5.7%
Widowed	6,020	7.9%	7.3%
<b>Total Residents</b>	<b>75,868</b>	<b>100.0%</b>	<b>100.0%</b>

**Table 4 Economic Activity**

	<b>Males</b>	<b>Females</b>	<b>Total</b>	<b>%</b>	<b>Renfrewshire %</b>
<b>Economically active (16-74)</b>	18,789	17,542	36,331	64.7%	66.0%
Total Employed	16,357	15,709	32,066	57.1%	59.1%
Employed Full-time	15,408	10,349	25,757	45.9%	47.2%
Employed Part-time	949	5,360	6,309	11.2%	11.8%
Self employed	1,896	522	2,418	4.3%	4.8%
Unemployed	1,686	776	2,462	4.4%	3.7%
Full-time student	746	1,057	1,803	3.2%	3.1%
<b>Economically inactive (16-74)</b>	7,914	11,921	19,835	35.3%	34.0%
Retired	3,107	4,907	8,014	14.3%	14.0%
Student	968	975	1,943	3.5%	3.3%
Looking after home/family	255	2,424	2,679	4.8%	4.8%
Permanently sick or disabled	2,648	2,260	4,908	8.7%	8.3%
Other	936	1,355	2,291	4.1%	3.6%
<b>Total</b>	<b>26,703</b>	<b>29,463</b>	<b>56,166</b>	<b>100.0%</b>	<b>100.0%</b>

Note: This table refers to all people aged 16-74



**Table 5 Occupation <sup>1</sup>**

<b>Occupation</b>	<b>Males</b>	<b>Females</b>	<b>Total</b>	<b>%</b>	<b>Renfrewshire %</b>
1. Managers & Senior Officials	2,429	1,481	3,910	11.6%	12.4%
2. Professional Occupations	1,871	1,611	3,482	10.3%	10.3%
3. Associate Professional & Technical Occupations	2,292	2,573	4,865	14.5%	14.8%
4. Administrative & Secretarial Occupations	1,002	3,779	4,781	14.2%	14.2%
5. Skilled Trades occupation	3,032	233	3,265	9.7%	10.4%
6. Personal Service Occupations	510	2123	2,633	7.8%	7.3%
7. Sales & Customer Service Occupations	895	2147	3,042	9.0%	9.0%
8. Process, Plant & Machine Operatives	2,794	560	3,354	10.0%	10.1%
9. Elementary Occupations	2,174	2141	4,315	12.8%	11.5%
<b>Total</b>	<b>16,999</b>	<b>16,648</b>	<b>33,647</b>	<b>100.0%</b>	<b>100.0%</b>

<sup>1</sup> The occupation classification is SOC2000 (Standard Occupation Classification)

Note: This table refers to all people aged 16-74 in employment

**Table 6 Industry of Employment**

<b>Industry</b>	<b>Males</b>	<b>Females</b>	<b>Total</b>	<b>%</b>	<b>Renfrewshire %</b>
A, B - Agriculture, Hunting, Forestry & Fishing	126	22	148	0.4%	0.7%
C, E - Mining & Quarrying, Electricity, Gas and Water Supply	295	95	390	1.2%	1.1%
D - Manufacturing	3,376	1,498	4,874	14.5%	15.6%
F - Construction	2,085	297	2,382	7.1%	7.2%
G - Wholesale and Retail Trade, Repair and Motor Vehicles	2,235	2,401	4,636	13.8%	14.1%
H - Hotels & Restaurants	725	1,111	1,836	5.5%	5.1%
I - Transport, Storage and Communication	2,099	941	3,040	9.0%	8.9%
J - Financial Intermediation	470	895	1,365	4.1%	4.4%
K - Real Estate, Renting and Business Activities	2,002	1,860	3,862	11.5%	11.1%
L - Public Administration & Defence, Social Security	1,219	1,195	2,414	7.2%	6.9%
M - Education	783	1,743	2,526	7.5%	7.2%
N - Health & Social Work	838	3,742	4,580	13.6%	13.2%
O, P, Q - Other	746	848	1,594	4.7%	4.7%
<b>Total</b>	<b>16,999</b>	<b>16,648</b>	<b>33,647</b>		

Note: This table refers to all people aged 16-74 in employment

**Table 7 Social Class**

<b>Social Class</b>	<b>Total</b>	<b>%</b>	<b>Renfrewshire %</b>
AB Higher & Intermediate Managerial/Admin/Professional	10,752	17.8%	19.7%
C1 Supervisory, Clerical, Junior Managerial/Admin/Professional	15,492	25.6%	26.4%
C2 Skilled Manual workers	7,497	12.4%	13.4%
D Semi Skilled and Unskilled Manual Workers	11,417	18.9%	17.7%
E On State benefit, Unemployed, Lowest grade workers	15,364	25.4%	22.8%
<b>Total</b>	<b>60,522</b>	<b>100.0%</b>	<b>100.0%</b>

Note: This table refers to all people aged 16+ in households

**Table 8 House Type**

<b>House Type</b>	<b>Total</b>	<b>%</b>	<b>Renfrewshire %</b>
Detached	3,747	10.7%	15.2%
Semi-detached	7,032	20.0%	22.2%
Terraced	6,462	18.4%	22.8%
Flat, Maisonette or Apartment	17,828	50.8%	39.7%
Other	38	0.1%	0.1%
<b>Total Households</b>	<b>35,107</b>	<b>100.0%</b>	<b>100.0%</b>

**Table 10 Housing Amenity**

<b>Amenity</b>	<b>Total</b>	<b>%</b>	<b>Renfrewshire %</b>
Overcrowded Households (Occupancy rating -1, -2 or less) <sup>1</sup>	5,311	15.1%	12.6%
Households with no central heating	2,866	8.2%	6.7%
Households without sole use of bath/shower & toilet	62	0.2%	0.1%
<b>Total Households</b>	<b>35,107</b>		

<sup>1</sup> Occupancy rating -1 or -2 is 1 or 2 or more rooms fewer than required by the household

**Table 11 Household Type**

<b>Household type</b>	<b>Total</b>	<b>%</b>	<b>Renfrewshire %</b>
Single adult households (non-pensioner)	8,040	22.9%	18.8%
Single pensioner households	5,446	15.5%	14.5%
Households with dependent children	9,334	26.6%	29.2%
Lone parent households	4,286	12.2%	11.4%
Lone parent households with dependent children	2,973	8.5%	7.6%
<b>Total Households</b>	<b>35,107</b>		

**Table 12 Travel to work or study**

Means of travel	Total	Working		Total	Studying	
		%	Renfrewshire %		%	Renfrewshire %
Underground, Tube, Metro or Light rail, Train	2,145	6.7%	5.7%	670	4.3%	4.2%
Bus, Minibus, Coach	4,779	14.9%	13.6%	3,541	22.9%	25.4%
Taxi, Minicab, Driving a Car or Van	20,436	63.7%	67.4%	4,208	27.2%	26.7%
Motorcycle, Scooter or Moped	123	0.4%	0.4%	50	0.3%	0.3%
Bicycle	287	0.9%	0.9%	46	0.3%	0.2%
On foot	2,982	9.3%	7.6%	5,989	38.7%	37.5%
Other	201	0.6%	0.7%	74	0.5%	0.3%
Work or study mainly at or from home	1,113	3.5%	3.7%	904	5.8%	5.4%
<b>Total Residents</b>	32,066	100.0%	100.0%	15,482	100.0%	100.0%
Not working or studying	28,320					

**Table 13 Car Availability**

Car availability	Total	%	Renfrewshire %
Households without a car	15,487	44.1%	37.2%
Households with one car	13,917	39.6%	41.4%
Households with two cars	4,941	14.1%	18.2%
Households with three+ cars	762	2.2%	3.2%
<b>Total</b>	35,107		

**Table 14 Qualifications**

Qualifications (All people aged 16-74)	Total	%	Renfrewshire %
No qualifications	19,593	34.9%	33.6%
Group 1 - O Grade, Standard Grade	13,832	24.6%	25.0%
Group 2 - Highers, ONC, SVG Level 3	8,621	15.3%	15.9%
Group 3 - HND, HNC, SVQ Levels 4 & 5	4,512	8.0%	8.1%
Group 4 - First or higher degree, professional qualification	9,608	17.1%	17.5%
<b>Total</b>	56,166		

**Table 15 Health Status**

Age Group	Good/fairly good		Not good	
	With limiting long term illness	No limiting long term illness	With limiting long term illness	No limiting long term illness
0-15	582	13,274	137	59
16-59	3,172	37,258	3,732	754
60-84	4,217	7,054	3,139	188
85+	475	232	296	5
<b>Total</b>	8,446	57,818	7,304	1,006

**Table 16 Care Providers**

Age Group	1-19hrs	20hrs+	Total	%	Renfrewshire %
0-15	138	39	177	2.3%	2.4%
16-59	3,891	1,840	5,731	75.5%	75.9%
60+	773	905	1,678	22.1%	21.7%
<b>Total</b>	4,802	2,784	7,586		