

**General Profile for Areas  
in Renfrewshire Council**

**July 2004**



**Area: Settlement08 – Inchinnan**

**Table 1 Basic Facts**

**Population**

All people	1,825
All people resident in households	1,790
All people resident in communal establishments	35

**Households**

All households	725
Housing stock	728

**General**

Area (hectares)	335
Some knowledge of Gaelic	36
Ethnic minority	17

**Common Age Bands**

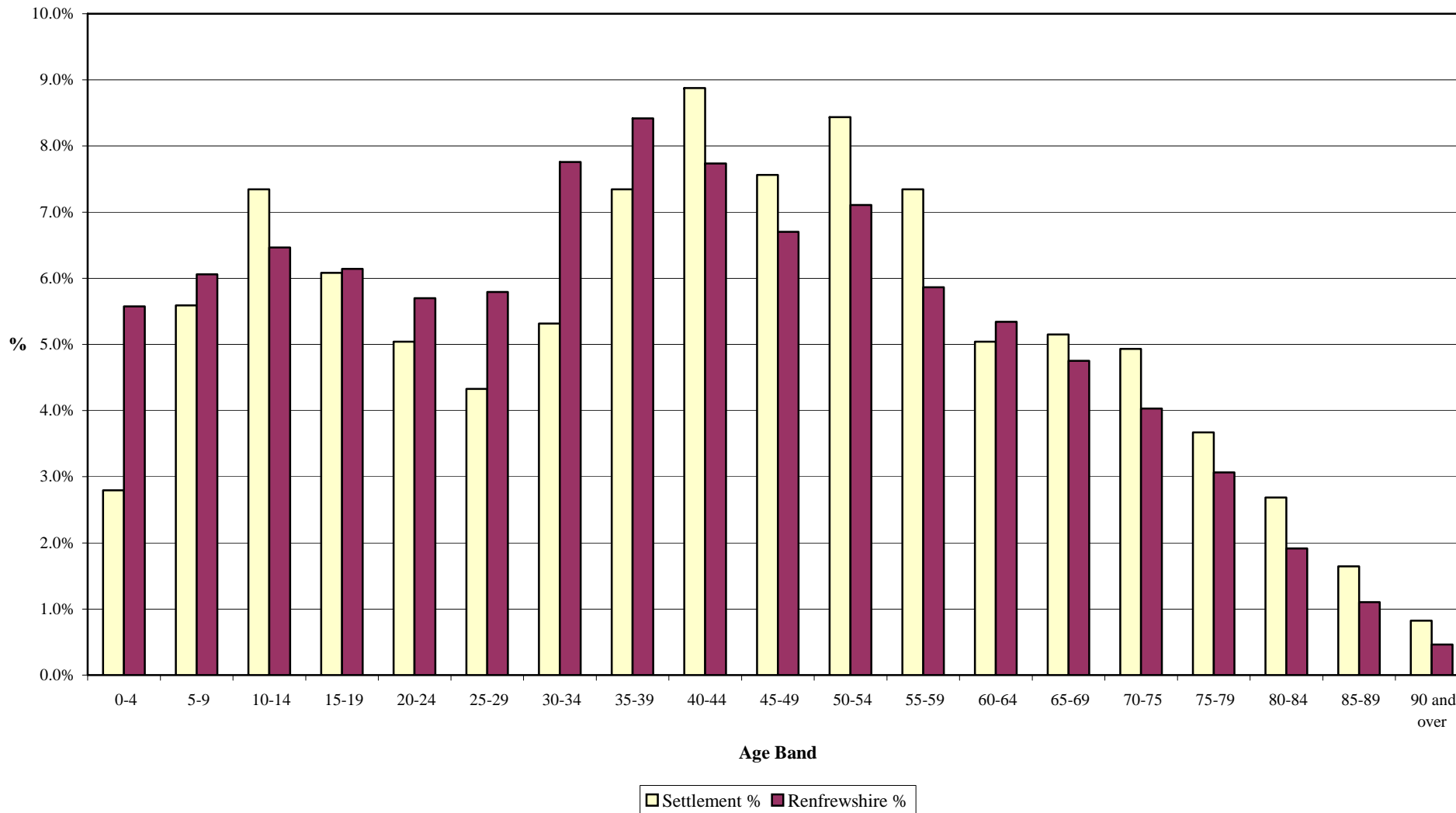
	Male	Female	All People	%	Renfrewshire %
Children 5 - 16	140	154	294	16.1%	15.1%
Under 18s	194	186	380	20.8%	23.1%
Working age population (16-59/64)	592	532	1,124	61.6%	62.4%
Economically Active population (16-74)	517	424	941	51.6%	48.8%
Pensioners (60/65)	151	237	388	21.3%	18.2%
People over 75	67	94	161	8.8%	6.6%
People over 85	14	31	45	2.5%	1.6%

**Table 2 Resident Population**

Age Group	Males	Females	Total	Settlement %	Renfrewshire %
0-4	33	18	51	2.8%	5.6%
5-9	51	51	102	5.6%	6.1%
10-14	62	72	134	7.3%	6.5%
15-19	56	55	111	6.1%	6.1%
20-24	53	39	92	5.0%	5.7%
25-29	44	35	79	4.3%	5.8%
30-34	48	49	97	5.3%	7.8%
35-39	74	60	134	7.3%	8.4%
40-44	75	87	162	8.9%	7.7%
45-49	67	71	138	7.6%	6.7%
50-54	78	76	154	8.4%	7.1%
55-59	59	75	134	7.3%	5.9%
60-64	49	43	92	5.0%	5.3%
65-69	40	54	94	5.2%	4.8%
70-75	44	46	90	4.9%	4.0%
75-79	29	38	67	3.7%	3.1%
80-84	24	25	49	2.7%	1.9%
85-89	11	19	30	1.6%	1.1%
90 and over	3	12	15	0.8%	0.5%
Total	900	925	1,825	100.0%	100.0%

Note: Figures are rounded to 1 decimal point

### 5 Year Age Bands - Renfrewshire & Settlement Comparison



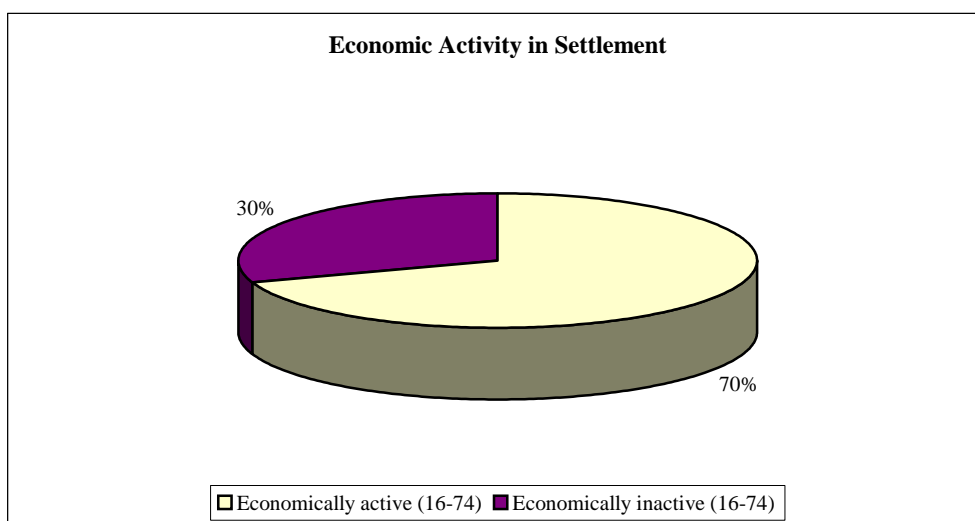
**Table 3 Marital Status**

Marital Status	No	%	Renfrewshire %
Single (never married)	644	35.3%	43.1%
Married (first marriage)	841	46.1%	36.8%
Re-married	89	4.9%	4.0%
Separated (but still legally married)	36	2.0%	3.1%
Divorced	71	3.9%	5.7%
Widowed	144	7.9%	7.3%
<b>Total Residents</b>	<b>1,825</b>	<b>100.0%</b>	<b>100.0%</b>

**Table 4 Economic Activity**

	Males	Females	Total	%	Renfrewshire %
<b>Economically active (16-74)</b>	517	424	941	69.7%	66.0%
Total Employed	461	399	860	63.7%	59.1%
Employed Full-time	434	232	666	49.3%	47.2%
Employed Part-time	27	167	194	14.4%	11.8%
Self employed	54	19	73	5.4%	4.8%
Unemployed	27	4	31	2.3%	3.7%
Full-time student	29	21	50	3.7%	3.1%
<b>Economically inactive (16-74)</b>	159	251	410	30.3%	34.0%
Retired	91	129	220	16.3%	14.0%
Student	21	29	50	3.7%	3.3%
Looking after home/family	2	38	40	3.0%	4.8%
Permanently sick or disabled	40	33	73	5.4%	8.3%
Other	5	22	27	2.0%	3.6%
<b>Total</b>	<b>676</b>	<b>675</b>	<b>1,351</b>	<b>100.0%</b>	<b>100.0%</b>

Note: This table refers to all people aged 16-74



**Table 5 Occupation<sup>1</sup>**

<b>Occupation</b>	<b>Males</b>	<b>Females</b>	<b>Total</b>	<b>%</b>	<b>Renfrewshire %</b>
1. Managers & Senior Officials	65	38	103	11.4%	12.4%
2. Professional Occupations	35	37	72	8.0%	10.3%
3. Associate Professional & Technical Occupations	77	64	141	15.6%	14.8%
4. Administrative & Secretarial Occupations	25	110	135	14.9%	14.2%
5. Skilled Trades occupation	113	1	114	12.6%	10.4%
6. Personal Service Occupations	11	51	62	6.9%	7.3%
7. Sales & Customer Service Occupations	21	51	72	8.0%	9.0%
8. Process, Plant & Machine Operatives	68	17	85	9.4%	10.1%
9. Elementary Occupations	72	48	120	13.3%	11.5%
<b>Total</b>	<b>487</b>	<b>417</b>	<b>904</b>	<b>100.0%</b>	<b>100.0%</b>

<sup>1</sup> The occupation classification is SOC2000 (Standard Occupation Classification)

Note: This table refers to all people aged 16-74 in employment

**Table 6 Industry of Employment**

<b>Industry</b>	<b>Males</b>	<b>Females</b>	<b>Total</b>	<b>%</b>	<b>Renfrewshire %</b>
A, B - Agriculture, Hunting, Forestry & Fishing	12	1	13	1.4%	0.7%
C, E - Mining & Quarrying, Electricity, Gas and Water Supply	7	0	7	0.8%	1.1%
D - Manufacturing	118	37	155	17.1%	15.6%
F - Construction	56	15	71	7.9%	7.2%
G - Wholesale and Retail Trade, Repair and Motor Vehicles	74	59	133	14.7%	14.1%
H - Hotels & Restaurants	22	27	49	5.4%	5.1%
I - Transport, Storage and Communication	44	34	78	8.6%	8.9%
J - Financial Intermediation	9	24	33	3.7%	4.4%
K - Real Estate, Renting and Business Activities	55	37	92	10.2%	11.1%
L - Public Administration & Defence, Social Security	35	24	59	6.5%	6.9%
M - Education	22	38	60	6.6%	7.2%
N - Health & Social Work	15	95	110	12.2%	13.2%
O, P, Q - Other	18	26	44	4.9%	4.7%
<b>Total</b>	<b>487</b>	<b>417</b>	<b>904</b>		

Note: This table refers to all people aged 16-74 in employment

**Table 7 Social Class**

<b>Social Class</b>	<b>Total</b>	<b>%</b>	<b>Renfrewshire %</b>
AB Higher & Intermediate Managerial/Admin/Professional	264	17.9%	19.7%
C1 Supervisory, Clerical, Junior Managerial/Admin/Professional	476	32.2%	26.4%
C2 Skilled Manual workers	201	13.6%	13.4%
D Semi Skilled and Unskilled Manual Workers	272	18.4%	17.7%
E On State benefit, Unemployed, Lowest grade workers	264	17.9%	22.8%
<b>Total</b>	<b>1,477</b>	<b>100.0%</b>	<b>100.0%</b>

Note: This table refers to all people aged 16+ in households

**Table 8 House Type**

<b>House Type</b>	<b>Total</b>	<b>%</b>	<b>Renfrewshire %</b>
Detached	85	11.7%	15.2%
Semi-detached	405	55.9%	22.2%
Terraced	83	11.4%	22.8%
Flat, Maisonette or Apartment	152	21.0%	39.7%
Other	0	0.0%	0.1%
<b>Total Households</b>	<b>725</b>	<b>100.0%</b>	<b>100.0%</b>

**Table 10 Housing Amenity**

<b>Amenity</b>	<b>Total</b>	<b>%</b>	<b>Renfrewshire %</b>
Overcrowded Households (Occupancy rating -1, -2 or less) <sup>1</sup>	63	8.7%	12.6%
Households with no central heating	34	4.7%	6.7%
Households without sole use of bath/shower & toilet	2	0.3%	0.1%
<b>Total Households</b>	<b>725</b>		

<sup>1</sup> Occupancy rating -1 or -2 is 1 or 2 or more rooms fewer than required by the household

**Table 11 Household Type**

<b>Household type</b>	<b>Total</b>	<b>%</b>	<b>Renfrewshire %</b>
Single adult households (non-pensioner)	74	10.2%	18.8%
Single pensioner households	99	13.7%	14.5%
Households with dependent children	216	29.8%	29.2%
Lone parent households	52	7.2%	11.4%
Lone parent households with dependent children	23	3.2%	7.6%
<b>Total Households</b>	<b>725</b>		

**Table 12 Travel to work or study**

Means of travel	Working			Studying		
	Total	%	Renfrewshire %	Total	%	Renfrewshire %
Underground, Tube, Metro or Light rail, Train	16	1.9%	5.7%	9	2.4%	4.2%
Bus, Minibus, Coach	101	11.7%	13.6%	164	42.9%	25.4%
Taxi, Minicab, Driving a Car or Van	643	74.8%	67.4%	64	16.8%	26.7%
Motorcycle, Scooter or Moped	3	0.3%	0.4%	1	0.3%	0.3%
Bicycle	10	1.2%	0.9%	0	0.0%	0.2%
On foot	45	5.2%	7.6%	125	32.7%	37.5%
Other	4	0.5%	0.7%	0	0.0%	0.3%
Work or study mainly at or from home	38	4.4%	3.7%	19	5.0%	5.4%
<b>Total Residents</b>	860	100.0%	100.0%	382	100.0%	100.0%
Not working or studying	583					

**Table 13 Car Availability**

Car availability	Total	%	Renfrewshire %
Households without a car	132	18.2%	37.2%
Households with one car	376	51.9%	41.4%
Households with two cars	183	25.2%	18.2%
Households with three+ cars	34	4.7%	3.2%
<b>Total</b>	725		

**Table 14 Qualifications**

Qualifications (All people aged 16-74)	Total	%	Renfrewshire %
No qualifications	415	30.7%	33.6%
Group 1 - O Grade, Standard Grade	353	26.1%	25.0%
Group 2 - Highers, ONC, SVG Level 3	272	20.1%	15.9%
Group 3 - HND, HNC, SVQ Levels 4 & 5	104	7.7%	8.1%
Group 4 - First or higher degree, professional qualification	207	15.3%	17.5%
<b>Total</b>	1,351		

**Table 15 Health Status**

Age Group	Good/fairly good		Not good	
	<i>With limiting long term illness</i>	<i>No limiting long term illness</i>	<i>With limiting long term illness</i>	<i>No limiting long term illness</i>
0-15	9	301	1	2
16-59	62	933	68	12
60-84	105	200	70	3
85+	11	4	9	0
<b>Total</b>	187	1,438	148	17

**Table 16 Care Providers**

Age Group	1-19hrs	20hrs+	Total	%	Renfrewshire %
0-15	6	0	6	2.9%	2.4%
16-59	117	40	157	77.0%	75.9%
60+	18	23	41	20.1%	21.7%
<b>Total</b>	141	63	204		