

Contact

If your child has significant additional support needs and you think s/he should have a Pupil Support Plan you can talk to your child's Head Teacher about your concerns.

You can get advice on Co-ordinated Support Plans from the Education Department's Pupil Services Manager.

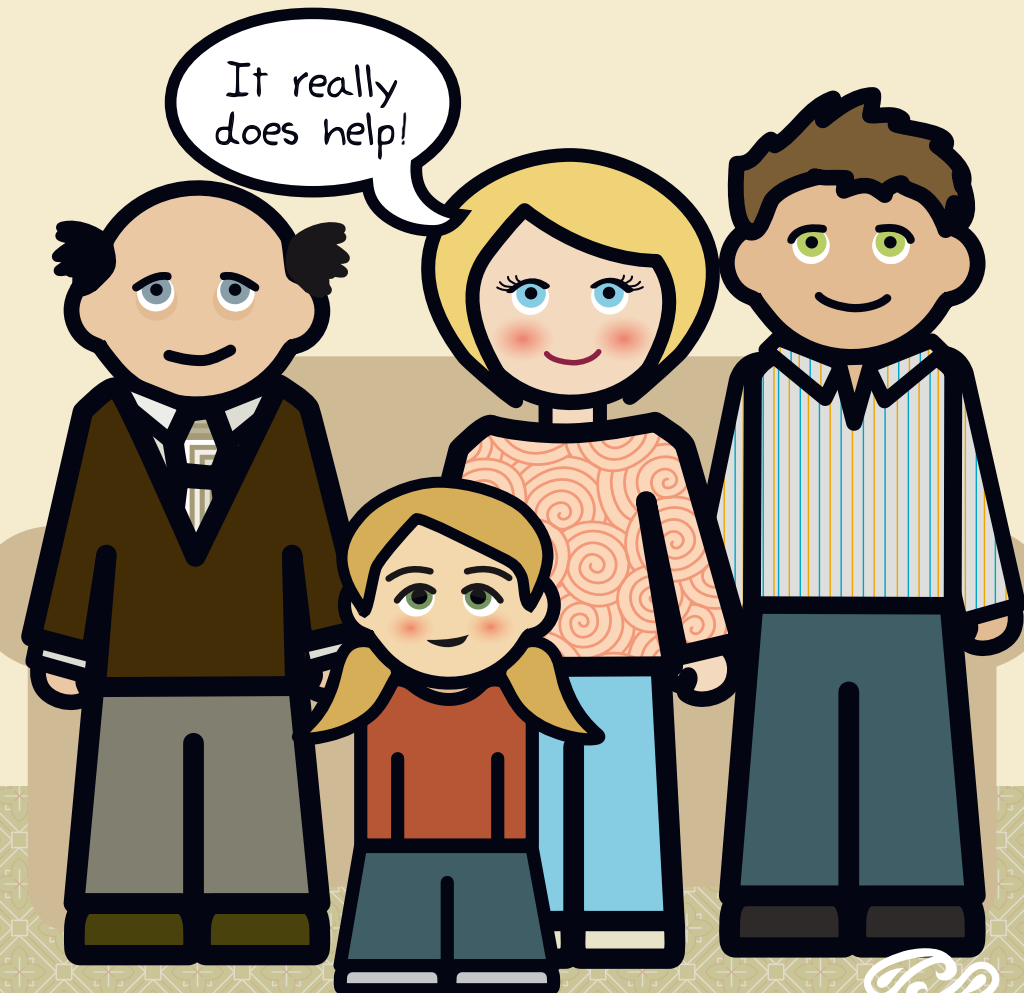
Address: Pupil Services
Education and Leisure Services
Renfrewshire Council
Cotton Street
Paisley
PA1 1LE

Phone: 0141 842 5441

Email: asl.els@renfrewshire.gov.uk

Additional Support Needs

What Parents and Carers Need to Know



Additional support needs

- A new law - the Education (Additional Support for Learning) (Scotland) Act - came into force on 14 November 2005.
- Schools have a duty to identify and try to address the additional support needs of all pupils.
- The phrase 'Special Educational Needs' (SEN) is no longer used.
- The phrase 'additional support needs' is used to underline that any pupil can have additional needs at any time.



why might a pupil have additional support needs?

Additional support needs can stem from a number of factors:

- a disability or health issue (e.g. autism, hearing or visual impairment).
- family circumstances (e.g. bereavement, homelessness).
- the learning environment (e.g. having English as a second language).
- social or emotional issues (e.g. being bullied or being a bully).

Every child is unique - they will only need additional support if their needs are causing them to make less progress than expected - this means they have barriers to learning.



code of practice

- A national Code of Practice tells us how pupil support should be provided. You can find the Code of Practice in www.scotland.gov.uk
- You have a right to request assessments to help establish the extent, if any, of your child's medical or psychological needs.
- There are deadlines for education authorities and their partners to complete assessments and inform you what additional support your child will need, if any.



Plans

- Most children with significant additional support needs will be supported through a Pupil Support Plan (PSP).
- A small number of pupils with very significant additional support needs will have a Co-ordinated Support Plan (CSP) which will say how agencies will work together to support a pupil.
- The CSP and the PSP will both say what support will be given to a pupil and what educational outcomes can be expected.



Plans continued

- To have a Co-ordinated Support Plan, a pupil's needs will last more than a year, the barriers to their learning will have a significant adverse effect on progress, and they will be unable to make progress at school without substantial, direct and continuing support from the education authority working together with health services or another appropriate agency, such as social work.
- The views of the parent and pupil have to be recorded and taken account of in deciding how best to support the pupil.
- If problems can't be solved in the school, independent mediation, dispute resolution and the national Additional Support Needs Tribunal will be available to help.



Further information

If you have access to the Internet you can find out more by visiting the websites shown below.

Sources of Further Information

- <http://www.asntscotland.gov.uk/>
- <http://www.enquire.org.uk/>
- <http://www.oasis.co.uk/>
(click on INFO SHEETS tab at top of page)
- <http://www.cafamily.org.uk/whenyourchild.html>
- <http://www.rnib.org.uk>
- <http://www.drc-gb.org/scotland/index.asp>
- <http://www.nas.org.uk>
- <http://www.ltscotland.org.uk/inclusiveeducation/specialfocus/Additionalupportforlearning.asp>

