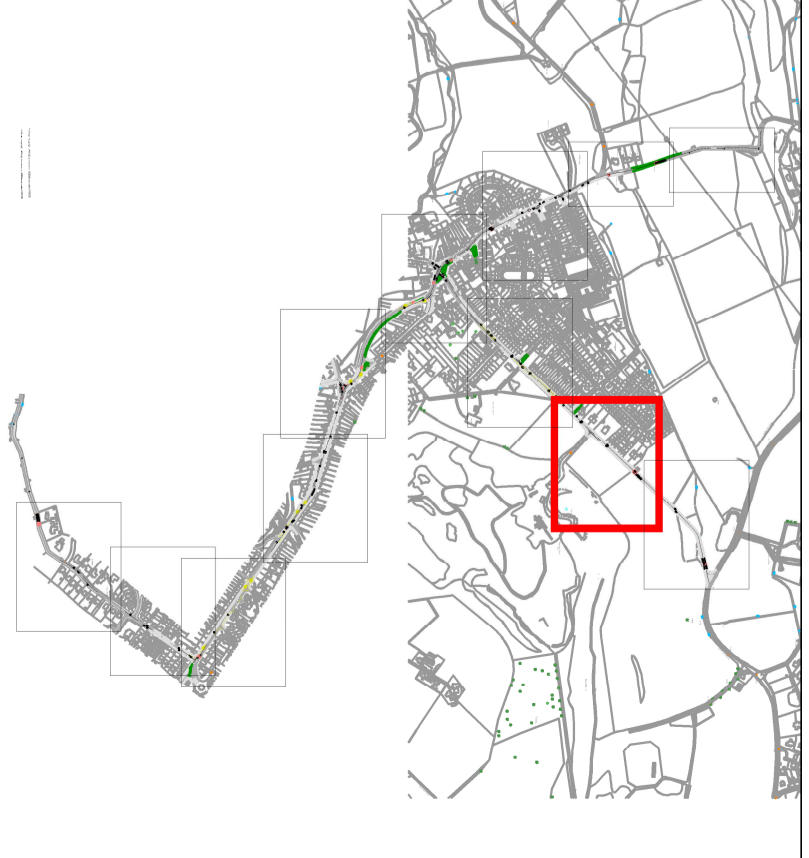


NOTES

- ORDNANCE SURVING MAPPING LICENSE DISCLAIMER
 THIS DRAWING CONTAINS DATA BASED ON ORDNANCE SURVEY MAPPING. REPRODUCED BY PERMISSION OF HMSO. CROWN COPYRIGHT. ALL RIGHTS RESERVED. 2022. LICENSE NUMBER 0100391873
- DO NOT SCALE FROM THIS DRAWING MANUALLY OR ELECTRONICALLY
 - THIS DRAWING IS TO BE READ IN CONJUNCTION WITH ALL OTHER RELEVANT PROJECT INFORMATION.
 - ALL DATUM LEVELS ARE IN METRES AND DIMENSIONS ARE IN MILLIMETRES UNLESS OTHERWISE STATED
 - UNLESS OTHERWISE STATED, ALL EXISTING ROAD MARKINGS AND TRAFFIC SIGNS TO BE RETAINED.



Rev	Date	Amendment Details	Dwn	Chk	Appr
P01	26.06.2022	FIRST ISSUE	RE	CD	LM
P02	15.09.2022	SECOND ISSUE	RE	CD	LM
P03	07.08.2022	THIRD ISSUE	RE	CD	LM
P04	12.09.2023	FOURTH ISSUE	RE	CD	LM
P05	19.10.2023	FIFTH ISSUE	RE	CD	LM

This drawing should not be relied on or used in circumstances other than those for which it was originally prepared and for which Sweco UK Limited was commissioned. Sweco UK Limited accepts no responsibility for the drawing or any other matter in respect of which Sweco UK Limited has been commissioned. Any use of this drawing in any other context is at the user's risk. Sweco UK Limited is not liable for any damage arising therefrom.
 COPYRIGHT © Sweco 2022



2nd Floor, Quay 2
 139 Fountainbridge
 Edinburgh
 EH3 9QG
 Tel: +44 (0)131 550 6300
 Web: www.sweco.co.uk



Renfrewshire Council

Project Title
VILLAGE TRAFFIC REDUCTION TRIAL STUDY
RC-CPU-21-125

Drawing Title
KILBARCHAN DESIGN INTERVENTIONS SHEET 10 OF 11

Purpose Of Issue
PRELIMINARY

Sheet Description
S2 FOR INFORMATION

Drawn	Designed	Checked	Approved
RE	RE	CD	LM

Sheet Size	Scale	Sweco Ref	Revision
A1	1:500	204806	P05

Drawing Number
204806-SWE-XX-XX-DH-3010