

Kilbarchan

PROVIDE A TSRGD DIA. 811A END OF PRIORITY OVER ONCOMING VEHICLE TRAFFIC SIGN AND SUPPLEMENTARY PLATE

PROVIDE A 100mm WIDE WHITE ADJACENT TO VERGE TO DELINEATE EDGE OF CARRIAGEWAY

PROVIDE A TSRGD DIA. 811A PRIORITY OVER ONCOMING VEHICLE TRAFFIC SIGN AND SUPPLEMENTARY PLATE

PROVIDE TSRGD DIA. 1024 SLOW ROAD MARKING 1600mm HIGH

PROVIDE TSRGD DIA. 1012.1 CONTINUOUS LONGITUDINAL LINE, 100mm WIDE, WHITE ADJACENT TO VERGE TO DELINEATE EDGE OF CARRIAGEWAY

PROVIDE TSRGD DIA. 1024 SLOW ROAD MARKING 1600mm HIGH

PROVIDE CARRIAGEWAY BUILD-OUT NARROW CARRIAGEWAY TO A SINGLE LANE AND AWAY PRIORITY TO NORTHBOUND TRAFFIC
 PROVIDE A TSRGD DIA. 1003A GIVE WAY AND TSRGD DIA. 1023A APPROACH TRIANGLE ROAD MARKING ON SOUTHBOUND APPROACH

PROVIDE A TSRGD DIA. 615 PRIORITY TO ONCOMING VEHICLE TRAFFIC SIGN AND SUPPLEMENTARY PLATE
 PROVIDE TSRGD DIA. 1024 SLOW ROAD MARKING 1600mm HIGH

PROVIDE TSRGD DIA. 1024 SLOW ROAD MARKING 1600mm HIGH

PROVIDE ZEBRA CROSSING

PROVIDE TSRGD DIA. 1024 SLOW ROAD MARKING 1600mm HIGH

PROVIDE TSRGD DIA. 1065 20mph ROUNDTEL ROAD MARKING 4300mm HIGH

PROVIDE A TSRGD DIA. 811A PRIORITY OVER ONCOMING VEHICLE TRAFFIC SIGN AND SUPPLEMENTARY PLATE

PROVIDE A TSRGD DIA. 811A END OF PRIORITY OVER ONCOMING VEHICLE TRAFFIC SIGN AND SUPPLEMENTARY PLATE
 PROVIDE TSRGD DIA. 1065 20mph ROUNDTEL ROAD MARKING 4300mm HIGH

PROVIDE 8.0m RADIUS JUNCTION BELMOUTHS

RENEW TSRGD DIA. 1004 LONGITUDINAL MARKINGS 4000mm MARK. 2000mm GAP. 100mm WIDTH

PROVIDE RED COLOURED SURFACE ARTIFICIAL ROAD HUMPS WITH NEAR-SIDE OVERRUN AREA

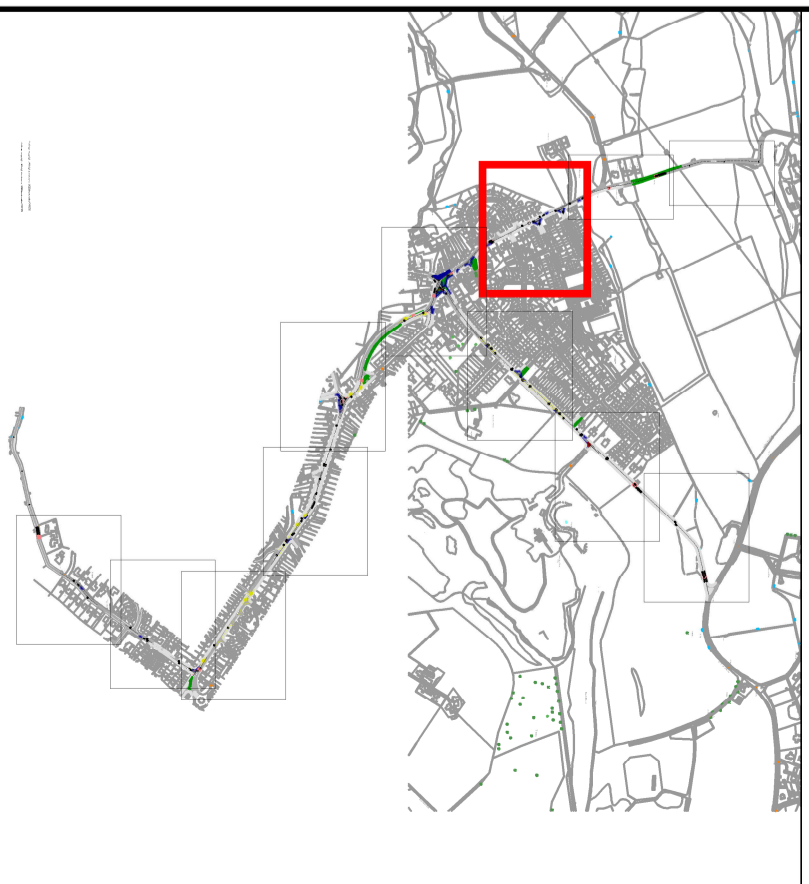
PROVIDE BUILD-OUTS TO ACCOMMODATE ON-STREET PARKING BAYS

CONTINUED ON SHEET 3



NOTES

1. DO NOT SCALE FROM THIS DRAWING MANUALLY OR ELECTRONICALLY
2. THIS DRAWING IS TO BE READ IN CONJUNCTION WITH ALL OTHER RELEVANT PROJECT INFORMATION.
3. ALL DATUM LEVELS ARE IN METRES AND DIMENSIONS ARE IN MILLIMETRES UNLESS OTHERWISE STATED.
4. UNLESS OTHERWISE STATED, ALL EXISTING ROAD MARKINGS AND TRAFFIC SIGNS TO BE RETAINED.



Rev	Date	Description	DN	CHK	APP
P01	28.08.2022	FIRST ISSUE	RE	CD	LM
P02	15.09.2022	SECOND ISSUE	RE	CD	LM
P03	07.08.2022	THIRD ISSUE	RE	CD	LM
P04	12.09.2023	FOURTH ISSUE	RE	CD	LM
P05	19.10.2023	FIFTH ISSUE	RE	CD	LM
Rev	Date	Amendment Details	Dn	CHK	App

This drawing should not be relied on or used in circumstances other than those for which it was originally prepared and for which Sweco UK Limited was commissioned. Sweco UK Limited accepts no responsibility for this drawing or any other matter prepared by or on behalf of Sweco UK Limited, either during or after the period of the contract for the provision of such services. Sweco UK Limited disclaims any liability for damages arising therefrom.
 COPYRIGHT © Sweco 2022



2nd Floor, Quay 2
 139 Fountainsbridge
 Edinburgh
 EH3 9QG
 Tel: +44 (0)131 550 6300
 Web: www.sweco.co.uk



**VILLAGE TRAFFIC REDUCTION TRIAL STUDY
 RC-CPU-21-125**

**KILBARCHAN
 DESIGN INTERVENTIONS
 SHEET 2 OF 11**

Project Title
 Drawing Title

Purpose of Issue			
PRELIMINARY			
Sheet No.	Scale	Checked	Approved
S2	FOR INFORMATION	RE	CD
RE	RE	CD	LM
Sheet No.	Scale	Checked	Approved
A1	1:500	RE	CD
A1	1:500	CD	LM
Drawing Number		Revision	
204806-SWE-XX-XX-DH-3002		P05	