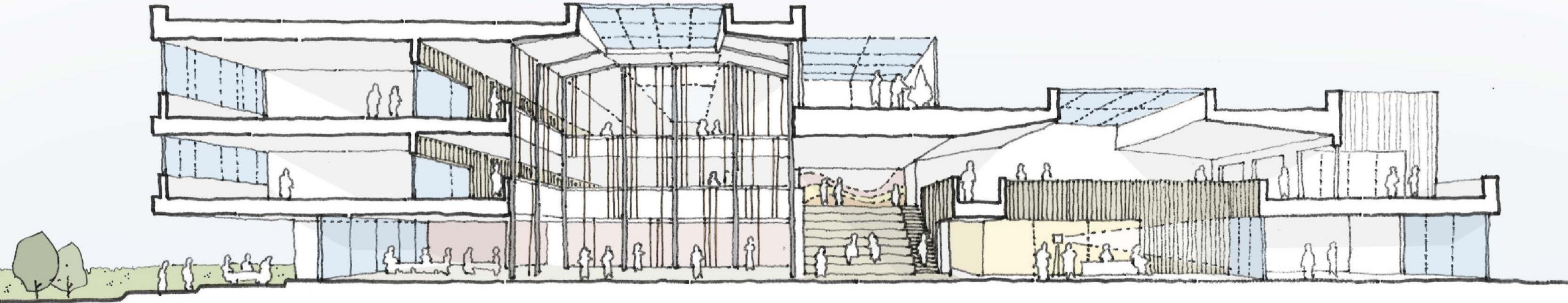


TEACHING SPACES

BREAKOUT

HEART SPACE



EXTERNAL DINING

PRACTICAL LEARNING

DINING

SOCIAL STAIR

PRACTICAL LEARNING

TEACHING SPACES

Paula Leca

Communities and Social Impact Manager

Supply Chain



Morrison Construction

Building Central

- Building Central is one of the largest operating units within Galliford Try.
- Turnover approximately £165M per annum.
- Typically, around 15 live projects in Central Belt of Scotland.
- Primary markets traditionally in Education & Health sectors.
- Currently increasing profile in Industrial and Residential markets.

© Andrew Heptinstall Photography





Our Supply Chain

To support this workload Morrison Construction requires a robust and scalable supply chain consisting of:

- Subcontractors
- Consultants
- Manufacturers & Distributors
- Plant Hire Suppliers
- Employment Agencies
- Supported Businesses



What we look for?

- Cultural Fit.
 - Strong track record in Health & Safety
 - Commitment to Sustainability
 - Collaboration & Innovation
 - Long term relationships
 - Commitment to local engagement
- Early engagement to maximise mutual benefits & opportunities.
- Competitive advantage.

Paisley Grammar Subcontracting Opportunities

Ground works

Structural steel

Landscaping

Fixtures

Furniture / Play equipment

Metal work

Fire stopping

General joinery

Bespoke joinery

External Signage

Screeding

Tiling

Flooring

Acoustic Panels

Sports and Gym equipment

What Next?

An on-boarding assessment process led by the Morrison Construction procurement team



Suppliers

Manufacturers/Distributors & Plant Hire suppliers assessed via a short form PQQ. Information required is standard company information and certifications/accreditations around HSE, Environment & Quality.



Subcontractors/Consultants

For Subcontractors & Consultants the process is a cloud based PQQ on the Builders Profile platform and based around standard PAS 91 question set. Differing levels of PQQ based on turnover and obligations under CDM regulations.

On-boarding – Key criteria

- Financial Stability
- Health & Safety
- Quality
- Environment
- Capacity
- Capability & Experience

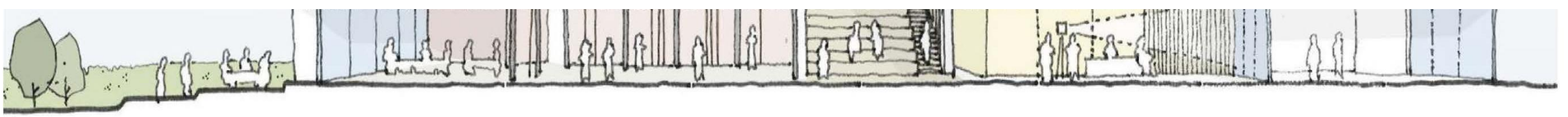
We will support you through this process !

After formal approval you will be added to Morrison Building Central supply chain, with visibility on capabilities and performance available to other operating units with Galliford Try.



© Andrew Heptinstall Photography





‘Meet the Buyer’ event

DATE

24th May 2023

TIME

10am - 1pm

LOCATION

27 High Street
Paisley, PA1 2AF

Booking through Eventbrite using the
QR Links below.

We would like to invite local companies to our ‘Meet the Buyer’ (MTB) event.

The event will take place on 24th of May from 10am - 1pm. It can be booked through Eventbrite using the QR links below.

Please use the QR codes below to book your preferred slot. For further details, please refer to the panel on the left.

Attending this Meet the Buyer will allow you to meet with the site team and procurement team and learn about Supply Chain opportunities as well as getting on-boarded with Morrison Construction.

Jim Johnstone

Head of Communities and Social Impact

Importance of Social Impact on Communities

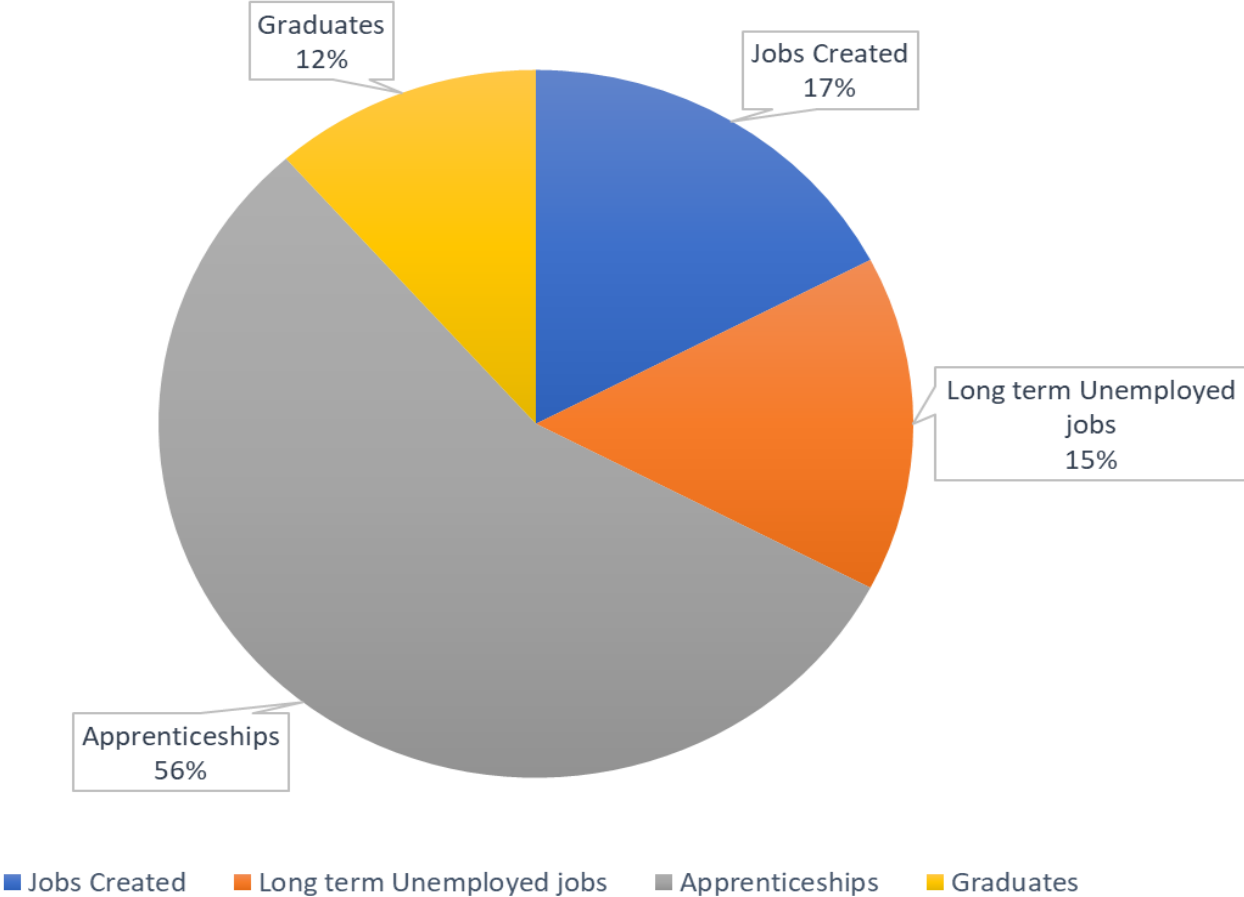


Local Supply Chain



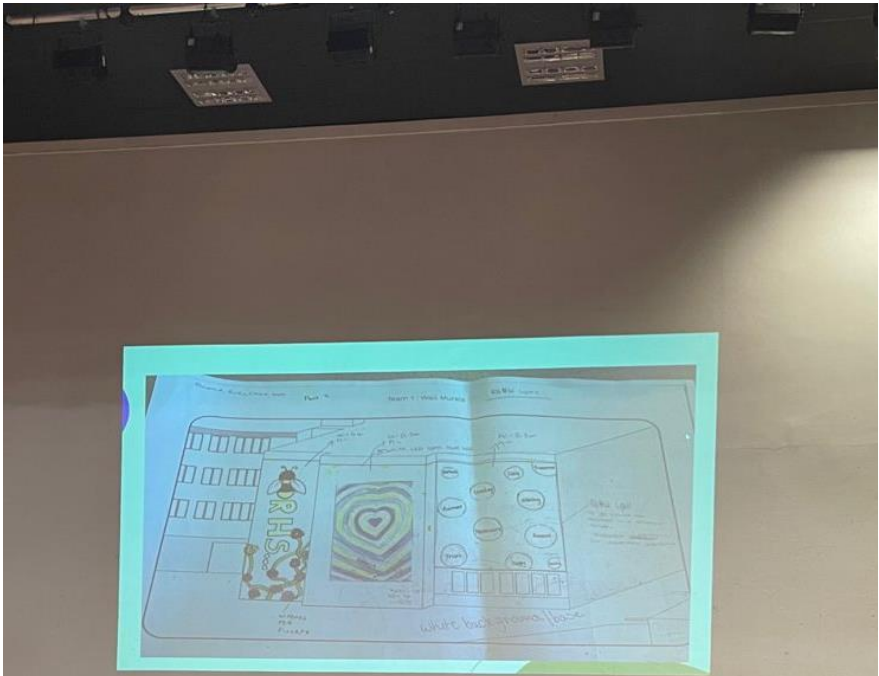
Local Jobs for Local People

52 Local Jobs Created: PTH & NMIS





Scott Herbison



Design Competition Renfrew High: NMIS



My Future Pathways Into Construction



Jim Johnstone
@JimJohnstone9

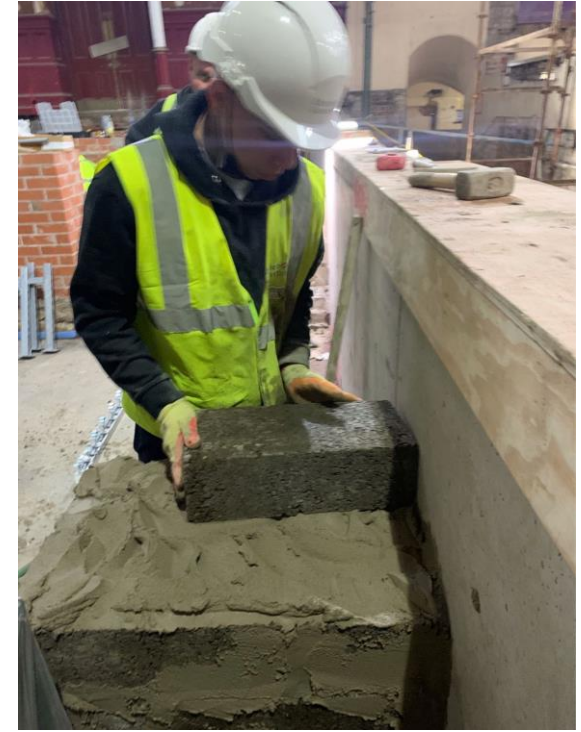
This week, we had Anthony on site at Paisley town hall completing work experience with Strathclyde Demolition. Anthony came from @InvestinRen to gain real life experience after gaining his CSCS card and will now continue to work with Strathclyde Demolition.

@morrisonbuilds



Invest in Renfrewshire and RenCouncil

12:49 pm · 15 Oct 2021 · Twitter Web App



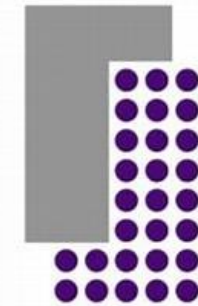
Work Experience



Community Impact



INVEST
in Renfrewshire



RENFREWSHIRE
CHAMBER OF COMMERCE

'To make a difference in someone's life you don't have to be brilliant rich beautiful or perfect you just have to care enough and be there' -Mandy Hale

We care enough to make a difference and want you to do the same!

